



WWW.PALLETFORKS.COM
TITAN
ATTACHMENTS



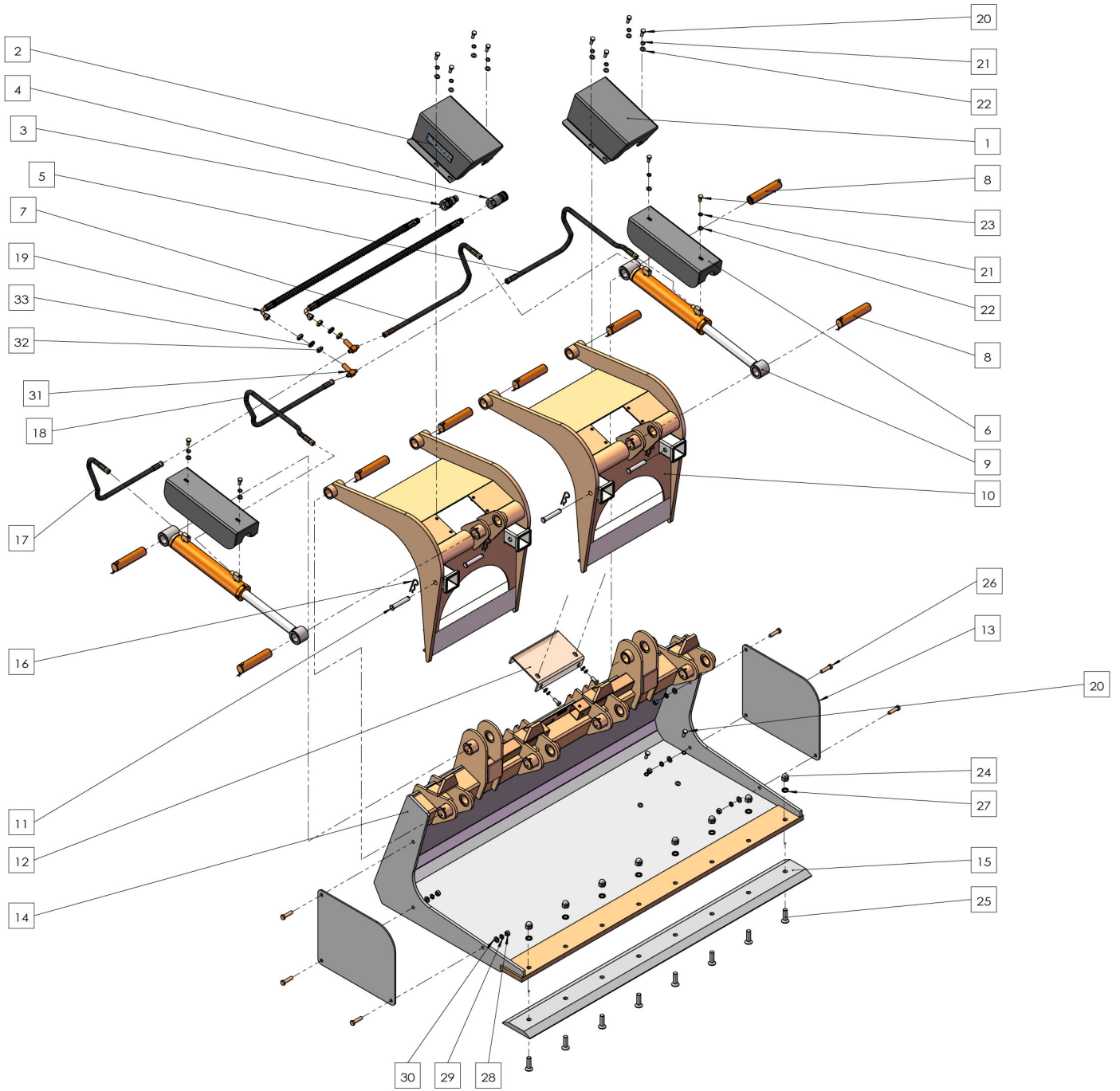
OWNER'S MANUAL

MPN(s): 60DEMOGRAP, 72DEMOGRAP, 84DEMOGRAP, DEMOGRAPHOOK, 60DEMOGRAP – DEMOGRAPHOOK, 72DEMOGRAP - DEMOGRAPHOOK, 84DEMOGRAP – DEMOGRAPHOOK, 60DEMOGRAP-(2)DEMOGRAPHOOK, 72DEMOGRAP-(2)DEMOGRAPHOOK, 84DEMOGRAP-(2)DEMOGRAPHOOK

SKU(s): 115019, 115020, 115021, 115022, 115025, 115026, 115027, 115028, 115029, 115030

UPC(s): 840009218088, 840009218095, 840009218101, 840009214592, 840009214561, 840009214578, 840009214585, 840009218217, 840009218224, 840009218231

60 DEMOGRAPH PARTS DIAGRAM



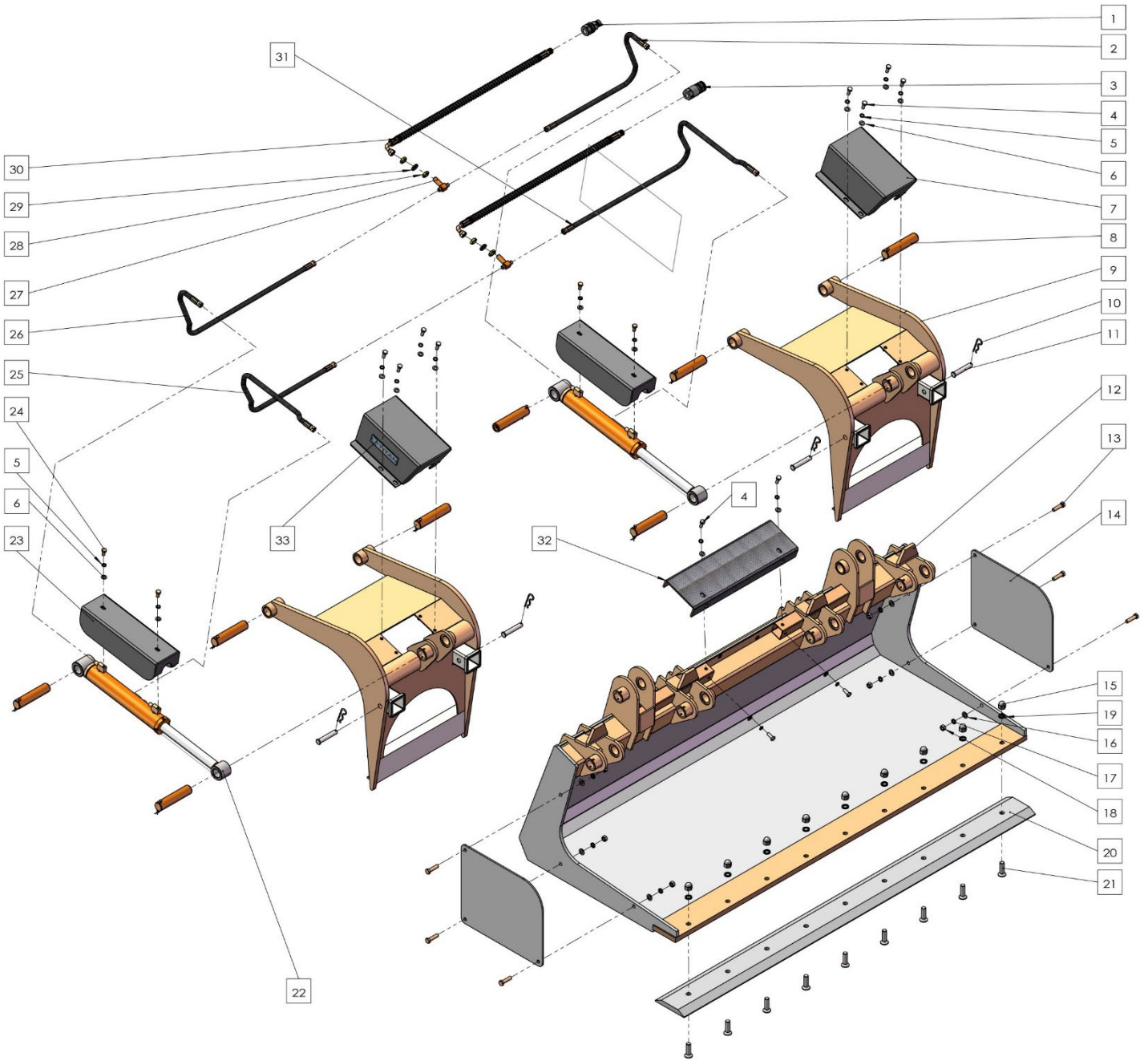
KEY	BOX	DESCRIPTION	QTY
(1)		CYLINDER FRONT SHIELD	2
(2)		TITAN ALUMINUM BADGE	2
(3)		FLAT FACE COUPLER - MALE	1
(4)		FLAT FACE COUPLER - FEMALE	1
(5)		OIL HOSE – RETURN 2	1
(6)		CYLINDER REAR SHIELD	2
(7)		OIL HOSE – FEED 2	1
(8)		BUCKET/CYLINDER PIN	8
(9)		HYDRAULIC CYLINDER	2
(10)		UPPER JAW ASSY	2
(11)		RECEIVER HITCH PIN	4
(12)		ANTI-SLIP BOARD	1
(13)		SIDE PLATE	2
(14)		BUCKET ASSY	1
(15)		FRONT CUTTING EDGE	1
(16)		COTTER PIN	4
(17)		OIL HOSE – FEED 1	1
(18)		OIL HOSE – RETURN 1	1
(19)		MAIN HOSE	2
(20)		HEXA BOLT M10x25	12
(21)		SPRING WASHER M10	16
(22)		FLAT WASHER M10	16
(23)		HEXA BOLT M10x20	4
(24)		HEXA CAP NUT M16	8
(25)		COUNTERSUNK HEXA BOLT M16x55	8
(26)		HEXA BOLT M12x45	6
(27)		SPRING WASHER M16	8
(28)		HEXA NUT M12	6
(29)		SPRING WASHER M12	6
(30)		FLAT WASHER M12	8



KEY	BOX	DESCRIPTION	QTY
(31)		T-CONNECTOR	2
(32)		HEXA THIN NUT G3-8	4
(33)		SPRING WASHER M18	2



72 DEMOGRAPH PARTS DIAGRAM



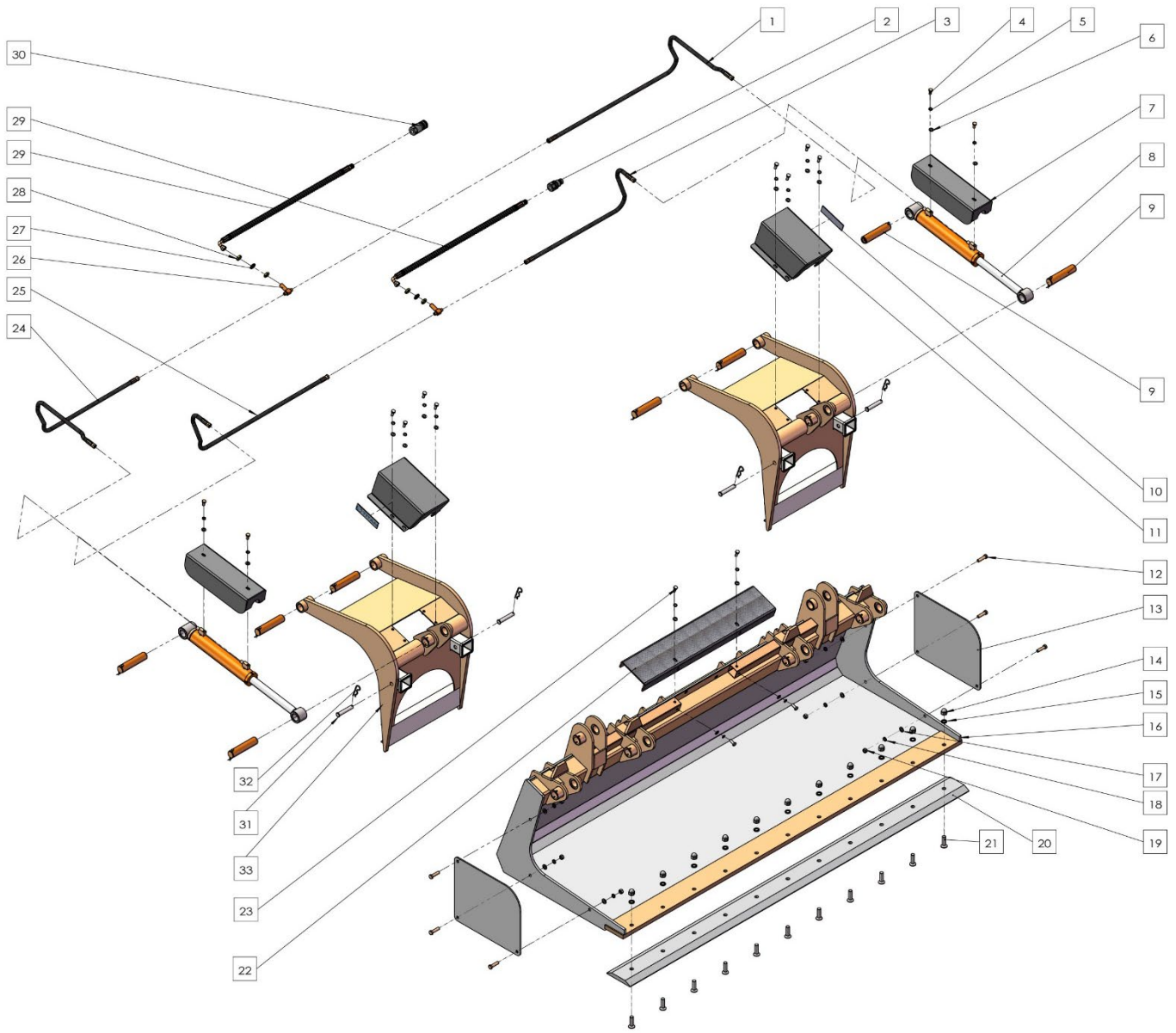
KEY	BOX	DESCRIPTION	QTY
(1)		FLAT FACE COUPLER - MALE	1
(2)		OIL HOSE – FEED 2	1
(3)		FLAT FACE COUPLER - FEMALE	1
(4)		HEXA BOLT M10x25	12
(5)		SPRING WASHER M10	16
(6)		FLAT WASHER M10	16
(7)		CYLINDER FRONT SHIELD	2
(8)		BUCKET/CYLINDER PIN	8
(9)		UPPER JAW ASSY	2
(10)		COTTER PIN	4
(11)		RECEIVER HITCH PIN	4
(12)		BUCKET ASSY	1
(13)		HEXA BOLT M12x45	6
(14)		SIDE PLATE	2
(15)		HEXA CAP NUT M16	9
(16)		FLAT WASHER M12	8
(17)		SPRING WASHER M12	8
(18)		HEXA NUT M12	8
(19)		SPRING WASHER M16	9
(20)		FRONT CUTTING EDGE	1
(21)		COUNTERSUNK HEXA BOLT M16x55	9
(22)		HYDRAULIC CYLINDER	2
(23)		CYLINDER REAR SHIELD	2
(24)		HEXA BOLT M10x20	4
(25)		OIL HOSE – RETURN 1	1
(26)		OIL HOSE – FEED 1	1
(27)		T-CONNECTOR	2
(28)		HEXA THIN NUT G3-8	4
(29)		SPRING WASHER M18	2
(30)		MAIN HOSE	2



KEY	BOX	DESCRIPTION	QTY
(31)		OIL HOSE – RETURN 2	1
(32)		ANTI-SLIP BOARD	1
(33)		TITAN ALUMINUM BADGE	2



84 DEMOGRAPH PARTS DIAGRAM



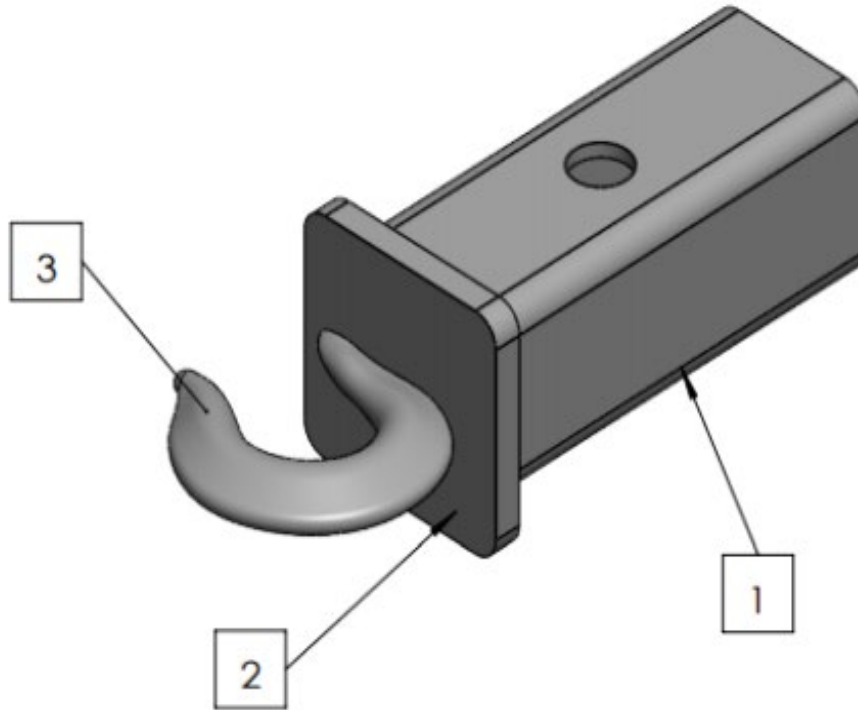
KEY	BOX	DESCRIPTION	QTY
(1)		OIL HOSE – RETURN 2	1
(2)		FLAT FACE COUPLER - MALE	1
(3)		OIL HOSE – FEED 2	1
(4)		HEXA BOLT M10x20	4
(5)		SPRING WASHER M10	16
(6)		FLAT WASHER M10	16
(7)		CYLINDER REAR SHIELD	2
(8)		HYDRAULIC CYLINDER	2
(9)		BUCKET/CYLINDER PIN	8
(10)		TITAN ALUMINUM BADGE	2
(11)		CYLINDER FRONT SHIELD	2
(12)		HEXA BOLT M12x45	6
(13)		SIDE PLATE	2
(14)		HEXA CAP NUT M16	11
(15)		SPRING WASHER M16	11
(16)		BUCKET ASSY	1
(17)		FLAT WASHER M12	6
(18)		SPRING WASHER M12	6
(19)		HEXA NUT	6
(20)		FRONT CUTTING EDGE	1
(21)		COUNTERSUNK HEXA BOLT M16x55	11
(22)		ANTI-SLIP BOARD	1
(23)		HEXA BOLT M10x25	12
(24)		OIL HOSE – RETURN 1	1
(25)		OIL HOSE – FEED 1	1
(26)		T-CONNECTOR	2
(27)		SPRING WASHER M18	2
(28)		HEXA THIN NUT G3-8	4
(29)		MAIN HOSE	2
(30)		FLAT FACE COUPLER - FEMALE	1



KEY	BOX	DESCRIPTION	QTY
(31)		RECEIVER HITCH PIN	4
(32)		COTTER PIN	4
(33)		UPPER JAW ASSY	2



DEMOGRAPHOOK PARTS DIAGRAM



KEY	BOX	DESCRIPTION	QTY
(1)	1	HITCH	2 or 4
(2)	1	COUPLING PLATE	2 or 4
(3)	1	CHAIN HOOK	2 or 4

ASSEMBLY INSTRUCTIONS

- Product comes as full assembly; no work is required for assembling.





This concludes the DEMOGRAP Owner's Manual.

*If applicable to your product, make sure to tighten
all nut-and-bolt combinations before use.*

Enjoy!

DISCLAIMER

This equipment must be used with care by capable and competent individuals under supervision, if necessary.

The use of any equipment, including this one, involves the potential risk of injury. You accept and assume full responsibility for any and all injuries, damages (both economic and non-economic), and losses of any type, which may occur, and you fully and forever release and discharge Titan, its insurers, employees, officers, directors, associates, and agents from any and all claims, demands, damages, rights of action, or causes of action, present or future, whether the same be known or unknown, anticipated, or unanticipated, resulting from or arising out of the use of said equipment.

TITAN MAKES NO WARRANTY WHATSOEVER WITH RESPECT TO THE EQUIPMENT, INCLUDING ANY WARRANTY OF MERCHANTABILITY OR WARRANTY OF FITNESS FOR A PARTICULAR PURPOSE, WHETHER EXPRESS OR IMPLIED BY LAW, COURSE OF DEALING, COURSE OF PERFORMANCE, USAGE OF TRADE OR OTHERWISE. BUYER ASSUMES ALL LIABILITY IN USE OF THE EQUIPMENT.

NEED HELP?

CONTACT US FIRST.

1 (800) 605-8241

info@titandistributorsinc.com / www.palletforks.com

Business Hours: Monday–Friday • 8:00 a.m.–5:00 p.m. (CT)

