



WWW.PALLETFORKS.COM

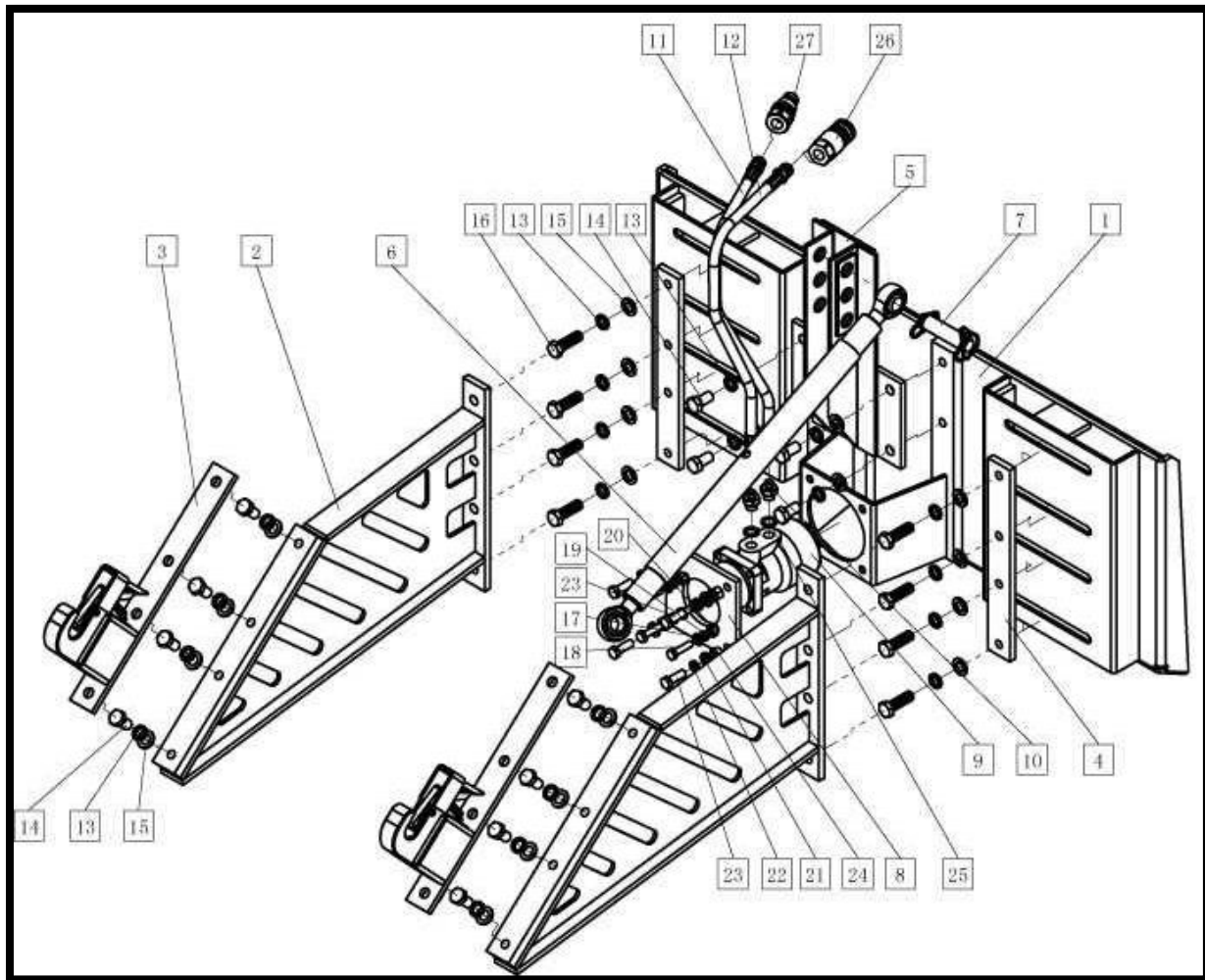
TITAN
ATTACHMENTS



OWNER'S MANUAL

MPN(s): PTOMPHD

PARTS DIAGRAM / EXPLODED VIEW



1. Back Mounting Plate Assy	x1
2. Side Frame Assy	x2
3. Auto Quick Hitch Assy	x2
4. Hook Mounting Plate T-12mm	x2
5. Top Link Bracket	x1
6. Top Link Arm	x1
7. Pin Assy	x1
8. Motor Bracket T-10mm	x1
9. Hydraulic Motor	x1
10. Hose Connector	x2
11. Oil Hose-Inlet	x1
12. Oil Hose-Return	x1
13. Spring Washer 18	x20
14. Hexa Bolt M16x30	x12
15. Flat Washer 16	x20
16. Hexa Bolt M16x50	x8
17. Flat Washer 10	x4
18. Hexa Bolt M10x40	x4
19. Spring Washer 10	x4
20. Hexa Nut M10	x4
21. Flat Washer 12	x4
22. Spring Washer 12	x4
23. Hexa Bolt M12x35	x4
24. Hexa Nut M12	x4
25. Seal Shim dia:18	x2
26. Flat Face Coupler-Female	x1
27. Flat Face Coupler-Male	x1



This concludes the PTOMPHD Owner's Manual.

If applicable to your product, make sure to tighten all nut-and-bolt combinations before use.

Enjoy!

DISCLAIMER

This equipment must be used with care by capable and competent individuals under supervision, if necessary.

The use of any equipment, including this one, involves the potential risk of injury. You accept and assume full responsibility for any and all injuries, damages (both economic and non-economic), and losses of any type, which may occur, and you fully and forever release and discharge Titan, its insurers, employees, officers, directors, associates, and agents from any and all claims, demands, damages, rights of action, or causes of action, present or future, whether the same be known or unknown, anticipated, or unanticipated, resulting from or arising out of the use of said equipment.

TITAN MAKES NO WARRANTY WHATSOEVER WITH RESPECT TO THE EQUIPMENT, INCLUDING ANY WARRANTY OF MERCHANTABILITY OR WARRANTY OF FITNESS FOR A PARTICULAR PURPOSE, WHETHER EXPRESS OR IMPLIED BY LAW, COURSE OF DEALING, COURSE OF PERFORMANCE, USAGE OF TRADE OR OTHERWISE. BUYER ASSUMES ALL LIABILITY IN USE OF THE EQUIPMENT.

NEED HELP?

CONTACT US FIRST.

1 (800) 605-8241

info@titandistributorsinc.com / www.palletforks.com

Business Hours: Monday–Friday • 8:00 a.m.–5:00 p.m. (CT)

