



WWW.PALLETFORKS.COM

TITAN
ATTACHMENTS



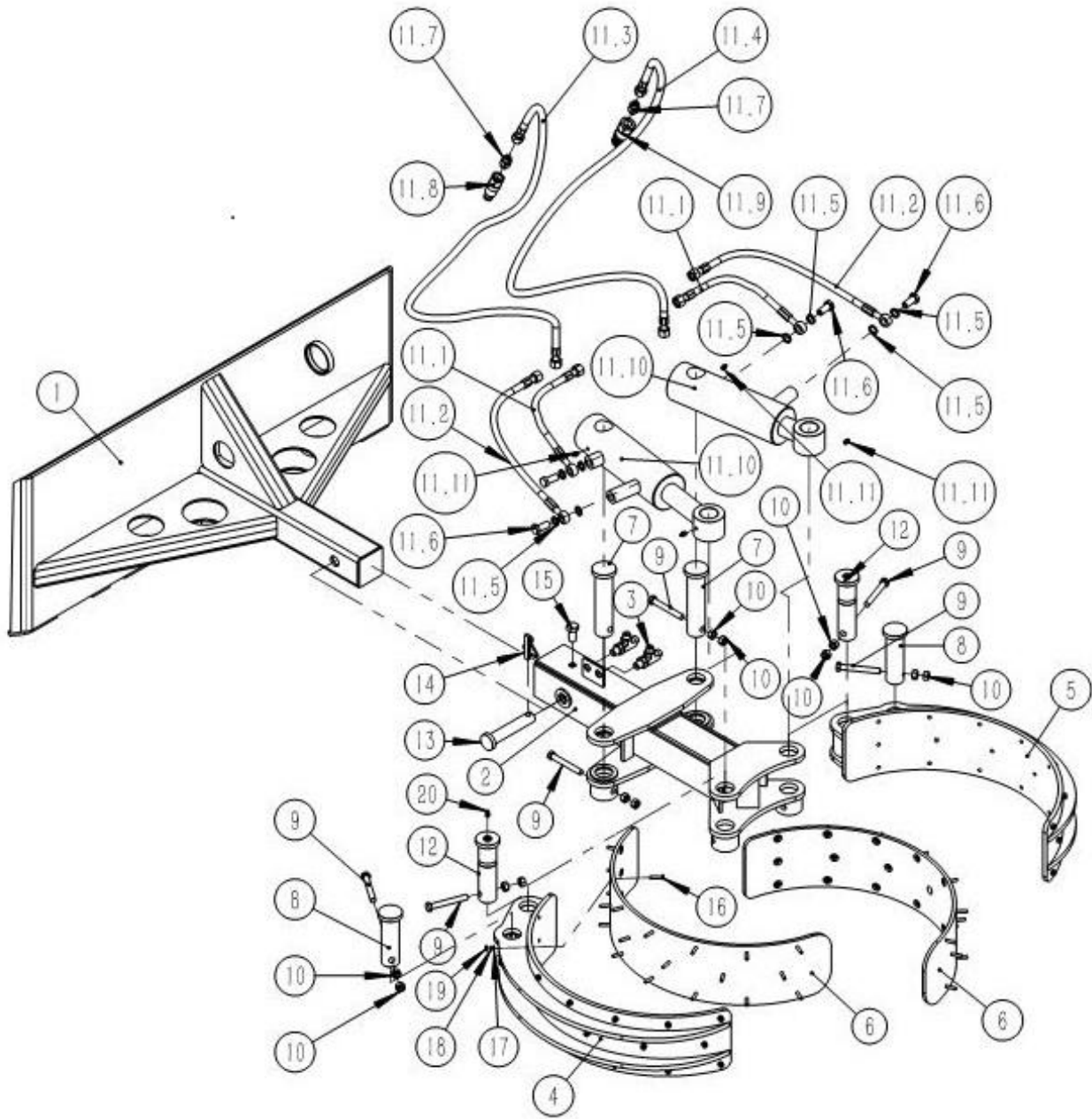
OWNER'S MANUAL

MPN(s): 55GRP

SKU(s): 191273

UPC(s): 719318387962

PARTS DIAGRAM / EXPLODED VIEW



| KEY | BOX | DESCRIPTION | QTY |
|-----|---------|------------------------|-----|
| 1 | SDG55.1 | Skid steer mount plate | 1 |
| 2 | SDG55.2 | Main frame weldment | 1 |
| 3 | ZG72.7 | Tee connector | 2 |



| | | | |
|-------|--------------|---|----|
| 4 | SDG55.3 | Claw welding 01 | 1 |
| 5 | SDG55.10 | Claw welding 02 | 1 |
| 6 | SDG55.4 | Antistatic wear resistant plate | 2 |
| 7 | SDG55.5 | Pin 01 | 2 |
| 8 | SDG55.6 | Pin 02 | 2 |
| 9 | GB/T 5783 | Hex Bolt M12*90 | 7 |
| 10 | GB/T 6170 | Hex Nut M12 | 14 |
| 11 | SDG55.9 | Hydraulic assembly | 1 |
| 11.1 | SDG55.9-1 | Oil Pipe 01 | 2 |
| 11.2 | SDG55.9-2 | Oil Pipe 02 | 2 |
| 11.3 | SDG55.9-4 | Oil Pipe 04 | 1 |
| 11.4 | SDG55.9-3 | Oil Pipe 03 | 1 |
| 11.5 | JBT 982 | Combination washer 16 | 8 |
| 11.6 | GB/T 3750.3 | Articulated bolt M16X1.5 | 4 |
| 11.7 | GE12LR1/2ED | Connector M16*1.5-G1/2" | 2 |
| 11.8 | KIS-PT-G04SP | Flat Quick change connector G1/2 (Male) | 1 |
| 11.9 | KIS-PT-G04SP | Flat Quick change connector G1/2 (Female) | 1 |
| 11.1 | SDG55.9-5 | Cylinder assembly | 2 |
| 11.11 | JB/T 7940.1 | Grease nipples M8*1 | 4 |
| 12 | SDG55.7 | Pin 03 | 2 |
| 13 | SDG55.8 | Pin 04 | 1 |
| 14 | DIN 11023 | Lock PinΦ11X40 | 1 |
| 15 | GB/T 5783 | Hex Bolt M16*30 | 1 |
| 16 | GBT 70.3 | Hexagon socket countersunk head screws M6*30 | 40 |
| 17 | GB/T 97.1 | Plain Washer 6 | 40 |
| 18 | GB/T 93 | Spring Washer 6 | 40 |
| 19 | GB/T 6170 | Hex Nut M12 | 40 |
| 20 | JB/T 7940.1 | Grease nipples M8*1 | 2 |





This concludes the 55GRP Owner's Manual.

*If applicable to your product, make sure to tighten all
nut-and-bolt combinations before use.*

Enjoy!

DISCLAIMER

This equipment must be used with care by capable and competent individuals under supervision, if necessary.

The use of any equipment, including this one, involves the potential risk of injury. You accept and assume full responsibility for any and all injuries, damages (both economic and non-economic), and losses of any type, which may occur, and you fully and forever release and discharge Titan, its insurers, employees, officers, directors, associates, and agents from any and all claims, demands, damages, rights of action, or causes of action, present or future, whether the same be known or unknown, anticipated, or unanticipated, resulting from or arising out of the use of said equipment.

TITAN MAKES NO WARRANTY WHATSOEVER WITH RESPECT TO THE EQUIPMENT, INCLUDING ANY WARRANTY OF MERCHANTABILITY OR WARRANTY OF FITNESS FOR A PARTICULAR PURPOSE, WHETHER EXPRESS OR IMPLIED BY LAW, COURSE OF DEALING, COURSE OF PERFORMANCE, USAGE OF TRADE OR OTHERWISE. BUYER ASSUMES ALL LIABILITY IN USE OF THE EQUIPMENT.

NEED HELP?

CONTACT US FIRST.

1 (800) 605-8241

info@titandistributorsinc.com / www.palletforks.com

Business Hours: Monday–Friday • 8:00 a.m.–5:00 p.m. (CT)

