

# 3PT DRUM PLUG AERATOR

---

50DPA, 60DPA

191335,191381



## Operator's Manual

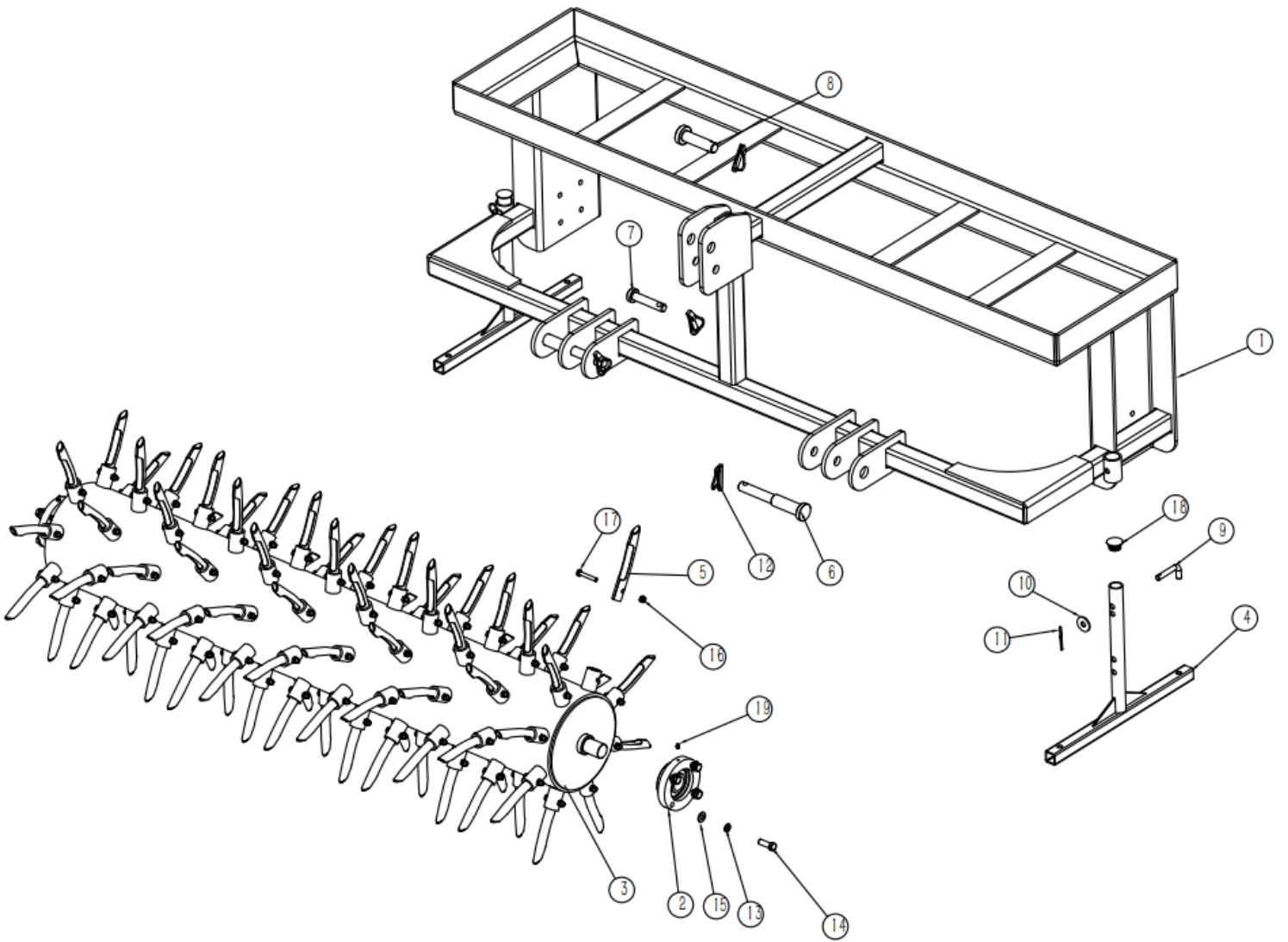


Read the Operator's Manual entirely. When you see this symbol, the subsequent instructions and warnings are serious follow without exception. Your life and the lives of others depend on it!

Cover photo may show optional equipment not supplied with standard unit. For an Operator's Manual and Decal Kit in French or Spanish Language, please see your dealer.

PARTS DIAGRAM / EXPLODED VIEW

---



<b>KEY</b>	<b>BOX</b>	<b>DESCRIPTION</b>	<b>50DPA</b>	<b>60DPA</b>
1	DLA50.3	FRAME WELDMENT	1	
1	DLA60.3	FRAME WELDMENT		1
2	GB/T 3882	FLANGE UC207	2	2
3	DLA50.1	ROLLER WELDMENT	1	1
4	DLA50.4	SUPPORTING WELDMENT	2	2
5	DLA50.2	SPOON PLUG	72	88
6	TLL5.2	LOWER PIN	2	2
7	TLL5.5	UPPER PIN 01	1	1
8	TLL5.6	UPPER PIN 02	1	1
9	EFGC175.37	PIN	2	2
10	GB/T 96	WASHER 12	2	2
11	EFGC125.110	R PIN 3.2	2	2
12	DIN 11023	LOCK PINΦ11*40	4	4
13	GB/T 93	SPRING WASHER 12	8	8
14	GB/T 5783	BOLT M12*35	8	8
15	GB/T 97.1	PLAIN WASHER 12	8	8
16	GB/T 889.1	LOCK NUT M8	72	88
17	GB/T 5783	BOLT M8*50	72	88
18	GB3985.58	COVER	2	2
19	JB/T 7940.1	OIL CUP M6×1	2	2

## ASSEMBLY INSTRUCTIONS

---

- No Assembly Instructions Required.

## ACKNOWLEDGEMENT OF RISK AND RELEASE OF LIABILITY

---

The use of any equipment, including this one, involves the potential risk of injury. Apart from any warranty claim that might be presented for a claimed defect in material or workmanship of the product, you accept and assume full responsibility for any and all injuries, damages (both economic and non-economic), and losses of any type, which may occur, and you fully and forever release and discharge Titan, its insurers, employees, officers, directors, associates, and agents from any and all claims, demands, damages, rights of action, or causes of action, present or future, whether the same be known or unknown, anticipated, or unanticipated, resulting from or arising out of the use of said equipment.

This equipment must be used with care by capable and competent individuals under supervision, if necessary.

## WARNING

---



Sharp objects may be involved.  
Use protective cover during maintenance.

## TITAN LIMITED WARRANTY: TERMS, EXCLUSIONS AND LIMITATIONS OF REMEDIES

---

This product comes with a one (1) year limited warranty that can be found at [www.palletforks.com/warranty.html](http://www.palletforks.com/warranty.html). Please review the same for all details regarding the Titan Limited Warranty.

**THE TITAN LIMITED WARRANTY FOUND AT [WWW.PALLETFORKS.COM/WARRANTY.HTML](http://WWW.PALLETFORKS.COM/WARRANTY.HTML) IS EXCLUSIVE AND IS IN LIEU OF ALL OTHER WARRANTIES, EXPRESS OR IMPLIED, INCLUDING ANY IMPLIED WARRANTY OF MERCHANTABILITY AND/OR FITNESS FOR A PARTICULAR PURPOSE, EACH OF WHICH IS HEREBY DISCLAIMED.**



**NEED HELP? CONTACT US FIRST.**

**1-800-605-7595**

[info@palletworks.com](mailto:info@palletworks.com)  
[www.palletforks.com](http://www.palletforks.com)

© 2021 Titan Brands