

ATV DISC HARROW

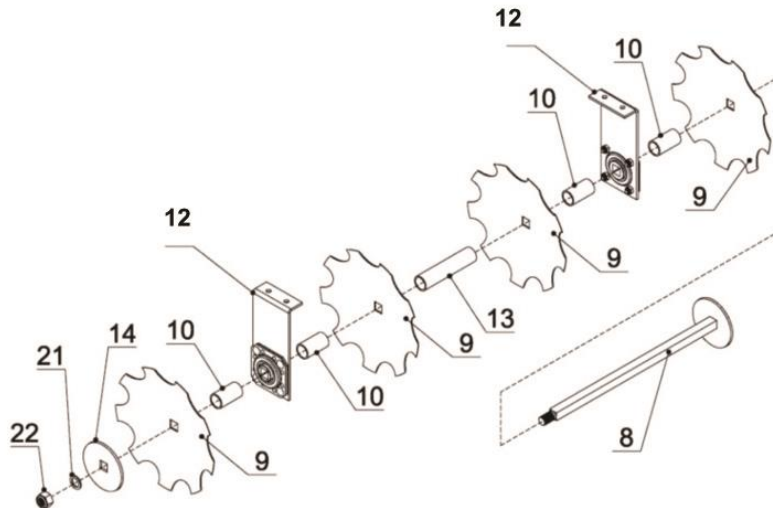
Owner's Manual



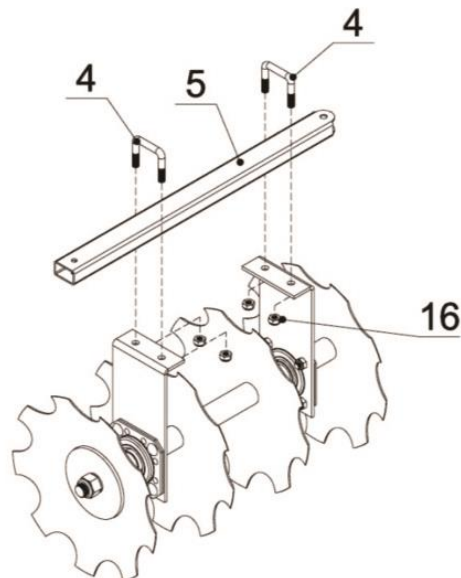
Please Read This Manual BEFORE Using This Tool

ASSEMBLY

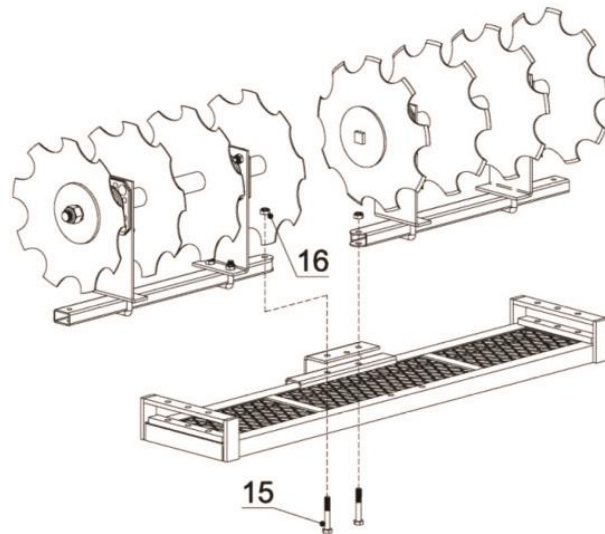
Step 1: Assemble four Discs to Square Axle Weldment as shown in diagram. Note the direction of the top mounting area of Ref# 12 – support plate. Repeat this step for each gang assembly.



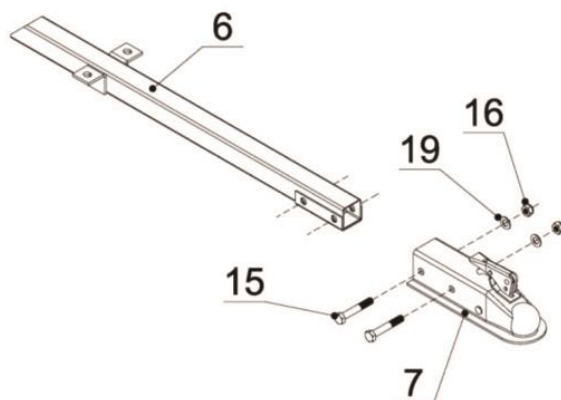
Step 2: Assemble the Rotating Arm to the Disc Gang Assemblies using U Style Bolts and Nut M12 as shown in diagram. WAIT to fully tighten lock nuts until later step. Repeat for each disc gang assembly.



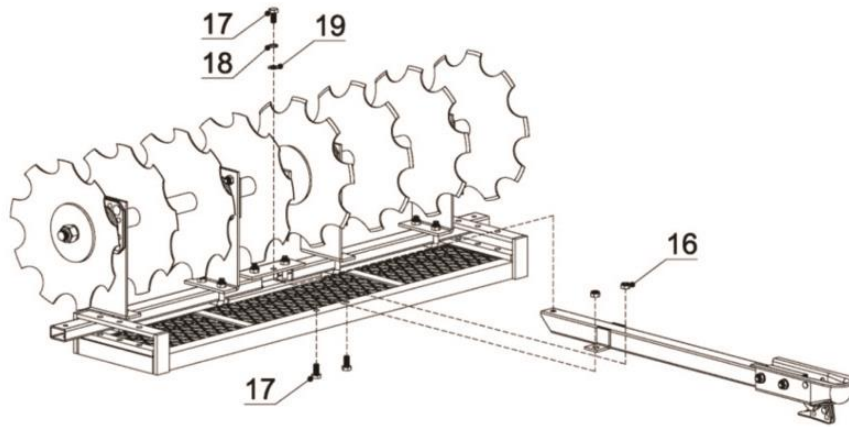
Step 3: Install the two Disc Gang Assemblies to the frame using Hex Bolt M12x80 and Nylon Lock Nut M12 as shown in diagram.



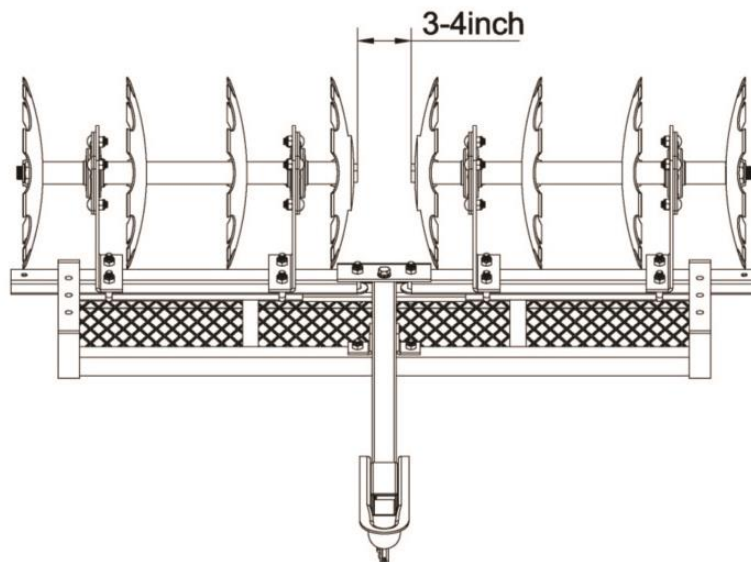
Step 4: Install the Coupler to the Hitch Tongue using Hex Bolt M12x80, Flat Washer Ø12 and Nylon Lock Nut M12 as shown in the diagram. Note the tabs at center of Hitch Tongue should face upward.



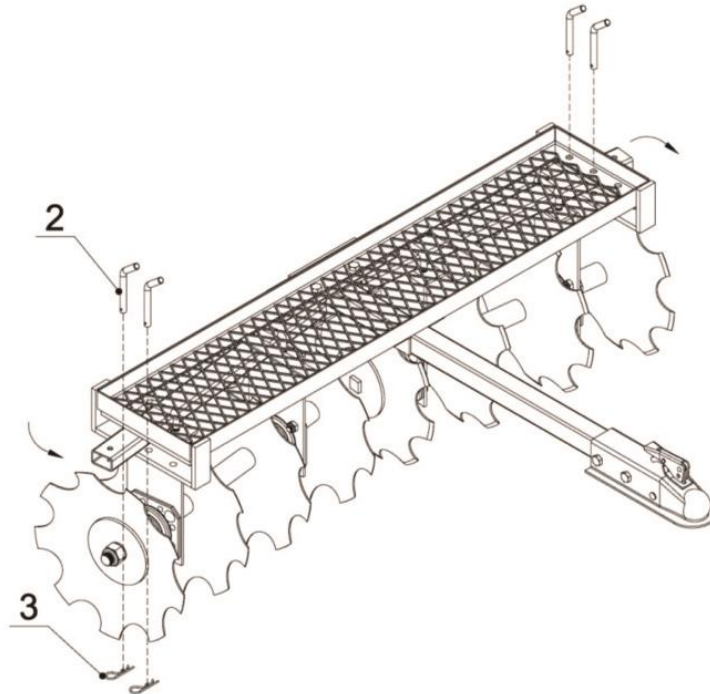
Step 5: Assemble the end of Hitch Tongue to the Frame Assembly using Hex Bolt M12x30. Then secure the center of Hitch Tongue to the Frame Assembly using Hex Bolt M12x30 and Nylon Lock Nut M12 as shown in the diagram.



Step 6: Adjust the distance between the two Disc Gang Assemblies to 3-4 inches as shown in the diagram. Then tighten all hardware from Step 2.



Step 7: Adjust the angle of two Disc Gang Arms, then secure each side of Gang Arm with Pin and R cotter Pin. Note: the discs should be at an angle when operating. If more angled, the disc will cut into soil more.

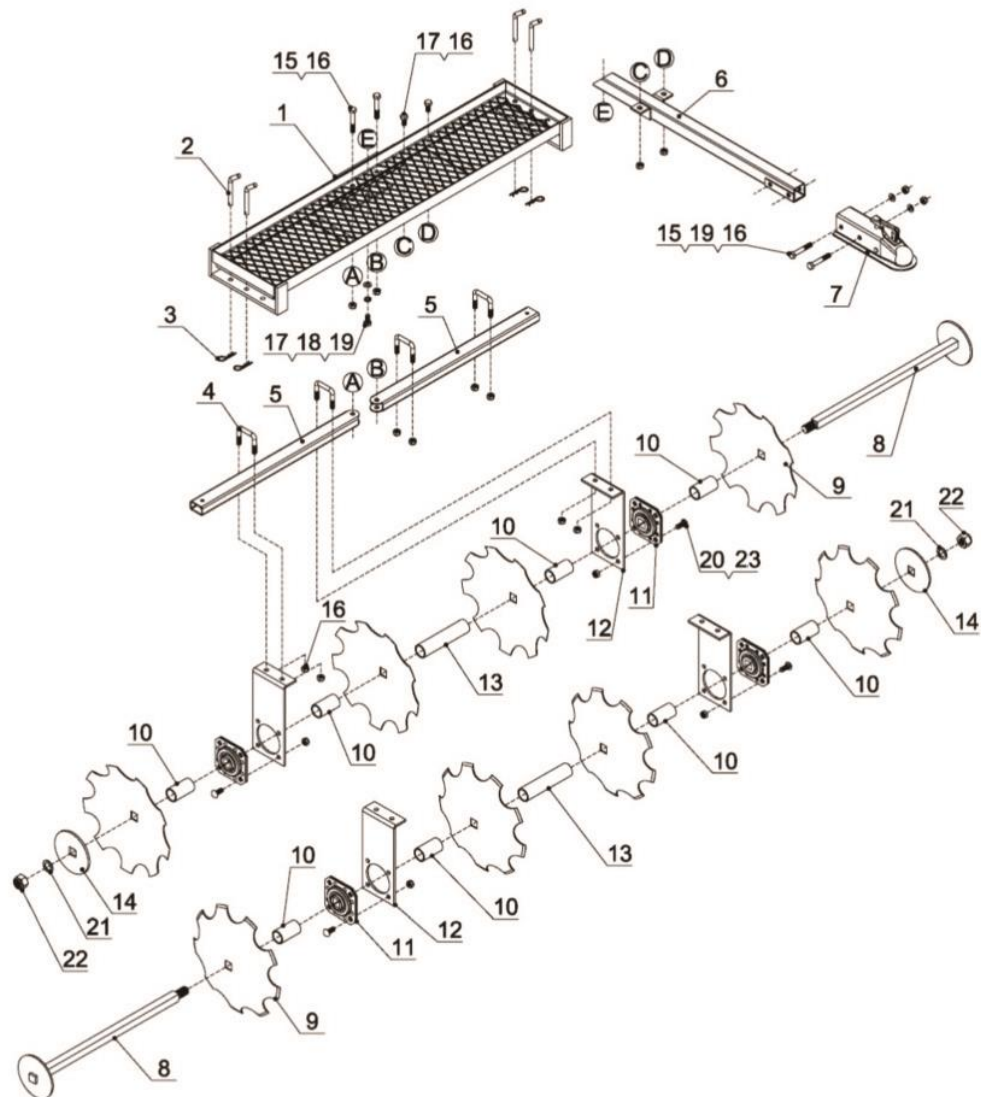


**The Disc is now fully assembled.
Disc angles are adjustable for desired harrow/soil preparation.**

MAINTENANCE

- **Maintain your disc.** It is recommended that the general condition of any disc be examined before it is used. Keep your disc in good repair by adopting a program of conscientious repair and maintenance. If any abnormal vibrations or noise occurs, have the problem corrected before further use. Have necessary repairs made by qualified service personnel.

DIAGRAM & PARTS LIST



Part#	Description	Qty	Part#	Description	Qty
1	Frame Weldment	1	12	Disc Support Plate	4
2	Pin	4	13	Long Sleeve	2
3	R Pin	4	14	Disc Pressure Plate	2
4	U Style Bolt	4	15	Hex Bolt M12x75	4
5	Rotating Arm	2	16	Nut M12	15
6	Hitch Tongue	1	17	Hex Bolt M12x30	3
7	Coupler	1	18	Lock Washer Ø12	8
8	Square Axle Weldment	2	19	Flat Washer Ø12	8
9	Disc	8	20	Bolt M10x25	16
10	Short Sleeve	8	21	Flat Washer Ø24	2
11	Bearing Base Assembly	4	22	Nut M24	4
			23	Nylon Lock Nut M10	16