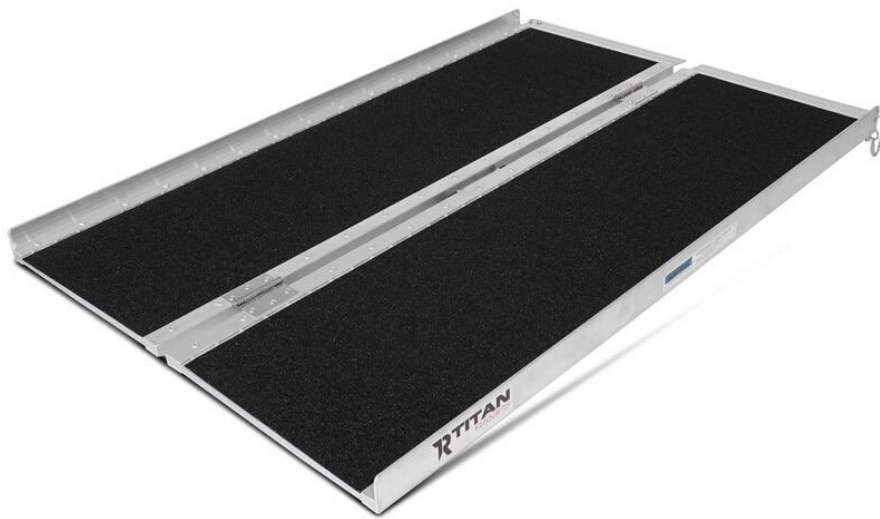


TITAN **RAMPS**



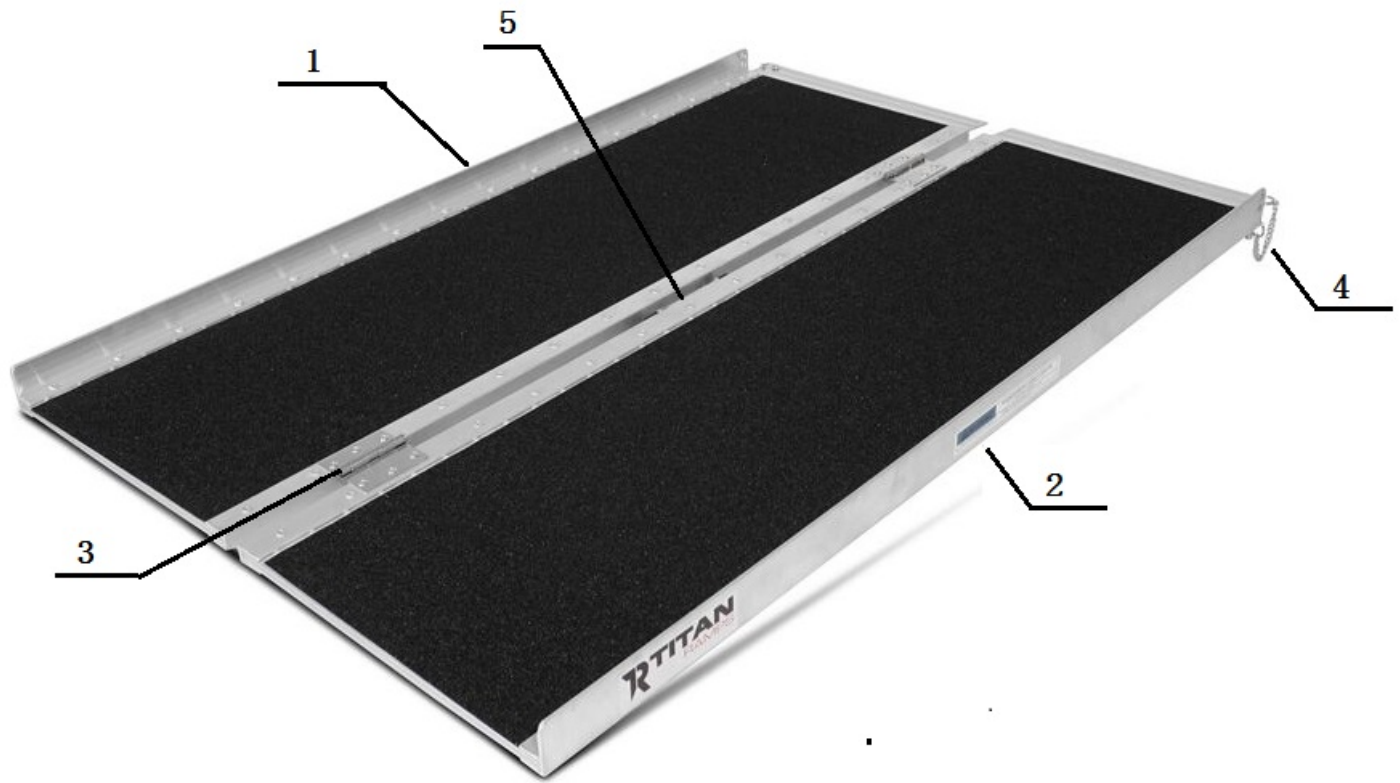
OWNER'S MANUAL

MPN(s): MR3B

SKU(s): 321301

UPC(s): 049008260924

PARTS DIAGRAM / EXPLODED VIEW



KEY	DESCRIPTION	QTY
(1)	SECTION A	1
(2)	SECTION B	1
(3)	HINGE	2
(4)	CHAIN WITH FIXING PIN	2
(5)	HANDEL	1

ASSEMBLY INSTRUCTIONS

– NO ASSEMBLY IS REQUIRED.

ADDITIONAL INFORMATION

MAXIMUM *OCCUPIED/UNOCCUPIED HEIGHT LIMIT TO GROUND LEVEL:**

2-ft ramp: Occupied loading: 4-in maximum, unoccupied loading height: 6-in

3-ft ramp: Occupied loading: 6-in maximum, unoccupied loading height: 9-in

4-ft ramp: Occupied loading: 8-in maximum, unoccupied loading height: 12-in

5-ft ramp: Occupied loading: 10-in maximum, unoccupied loading height: 15-in

6-ft ramp: Occupied loading: 12-in maximum, unoccupied loading height: 18-in

7-ft ramp: Occupied loading: 14-in maximum, unoccupied loading height: 21-in

8-ft ramp: Occupied loading: 16-in maximum, unoccupied loading height: 24-in

9-ft ramp: Occupied loading: 18-in maximum, unoccupied loading height: 27-in

10-ft ramp: Occupied loading: 20-in maximum, unoccupied loading height: 30-in

*Occupied is a person sitting in the wheelchair/scooter while loading (2:12 slope or 9.6 degree angle)

**Unoccupied is loading with nobody sitting in the wheelchair/scooter (3:12 slope or 14.5 degree angle)

Maximum Weight Capacity is 600-pounds. (Weight rating is based on evenly distributed load on 2 axles)

This concludes the MR3B Owner's Manual.

*If applicable to your product, make sure to tighten
all nut-and-bolt combinations before use.*

Enjoy!

DISCLAIMER

This equipment must be used with care by capable and competent individuals under supervision, if necessary.

The use of any equipment, including this one, involves the potential risk of injury. You accept and assume full responsibility for any and all injuries, damages (both economic and non-economic), and losses of any type, which may occur, and you fully and forever release and discharge Titan, its insurers, employees, officers, directors, associates, and agents from any and all claims, demands, damages, rights of action, or causes of action, present or future, whether the same be known or unknown, anticipated, or unanticipated, resulting from or arising out of the use of said equipment.

TITAN MAKES NO WARRANTY WHATSOEVER WITH RESPECT TO THE EQUIPMENT, INCLUDING ANY WARRANTY OF MERCHANTABILITY OR WARRANTY OF FITNESS FOR A PARTICULAR PURPOSE, WHETHER EXPRESS OR IMPLIED BY LAW, COURSE OF DEALING, COURSE OF PERFORMANCE, USAGE OF TRADE OR OTHERWISE. BUYER ASSUMES ALL LIABILITY IN USE OF THE EQUIPMENT.

NEED HELP?

CONTACT US FIRST.

1 (800) 605-8241

info@titandistributorsinc.com / www.titanramps.com

Business Hours: Monday–Friday • 8:00 a.m.–5:00 p.m. (CT)