



TITAN
FITNESS



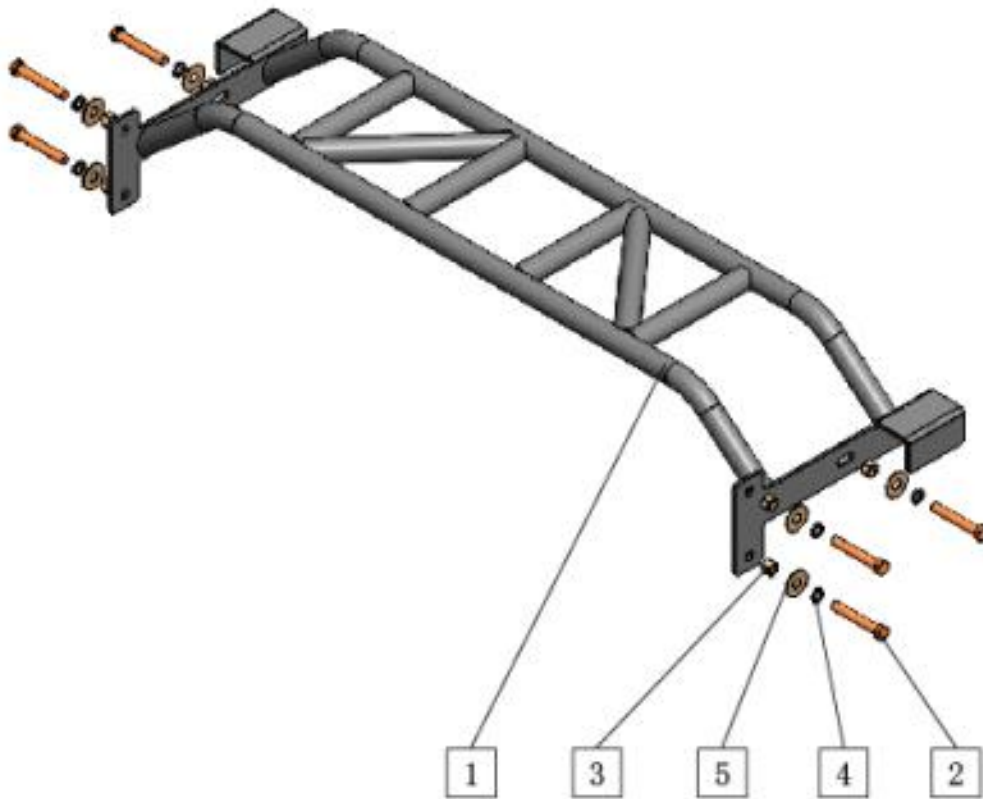
OWNER'S MANUAL

MPN(s): MULTIGT2

SKU(s): 400066

UPC(s): 719318365045

PARTS DIAGRAM / EXPLODED VIEW



Part #	Description	Quality
1	Multi-Grip Bar	1
2	Hex Bolt 12x80	6
3	Hex Nut 12	6
4	Spring Washer	6
5	Flat Washer 12	6



ASSEMBLY INSTRUCTIONS

STEP 1

On a Titan Fitness **T-2 Power Rack (400100)** Remove the **PULL-UP BAR (4)** from the **UPPER SIDE SUPPORT BRACE (7)**. To allow for installation for a Titan Fitness Multi-Grip Pull Up Bar.

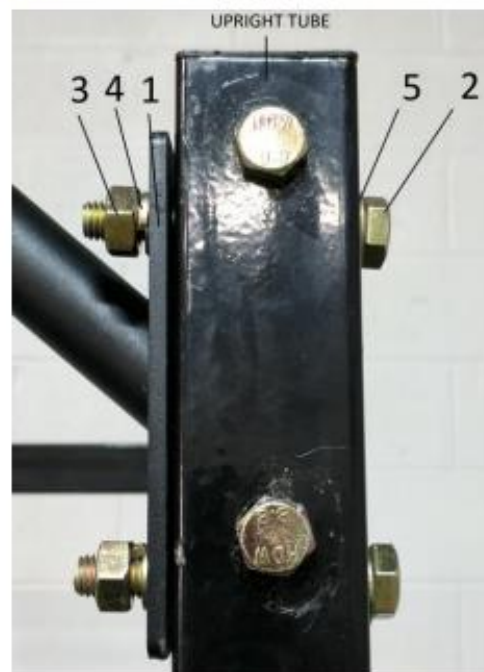
STEP 2

Install the **MULTIGRIP BAR (1)** onto the **UPPER SIDE SUPPORT BRACE** of the T-2 Power Rack. Align the **MULTIGRIP BAR** with the installation holes on the T-2 Power Rack.

STEP 3

Install the hardware to secure the MULTIGRIP BAR into the T-2 Power Rack.

The order of assembly is: **HEX BOLT 12x80 (2)**, **FLAT WASHER (5)**, **T-2 UPRIGHT TUBE**, **MULTIBAR (1)**, **SPRING WASHER (4)**, and **HEX NUT 12 (3)**.





This concludes the MULTIGT2 Owner's Manual.

If applicable to your product, make sure to tighten all nut-and-bolt combinations before use.

Enjoy!

DISCLAIMER

This equipment must be used with care by capable and competent individuals under supervision, if necessary.

The use of any fitness equipment, including this one, involves the potential risk of injury. You accept and assume full responsibility for any and all injuries, damages (both economic and non-economic), and losses of any type, which may occur, and you fully and forever release and discharge Titan, its insurers, employees, officers, directors, associates, and agents from any and all claims, demands, damages, rights of action, or causes of action, present or future, whether the same be known or unknown, anticipated, or unanticipated, resulting from or arising out of the use of said equipment.

TITAN MAKES NO WARRANTY WHATSOEVER WITH RESPECT TO THE EQUIPMENT, INCLUDING ANY WARRANTY OF MERCHANTABILITY OR WARRANTY OF FITNESS FOR A PARTICULAR PURPOSE, WHETHER EXPRESS OR IMPLIED BY LAW, COURSE OF DEALING, COURSE OF PERFORMANCE, USAGE OF TRADE OR OTHERWISE. BUYER ASSUMES ALL LIABILITY IN USE OF THE EQUIPMENT.

NEED HELP?

CONTACT US FIRST.

1 (800) 605-8241

info@titandistributorsinc.com / www.titan.fitness

Business Hours: Monday–Friday • 8:00 a.m.–5:00 p.m. (CT)

