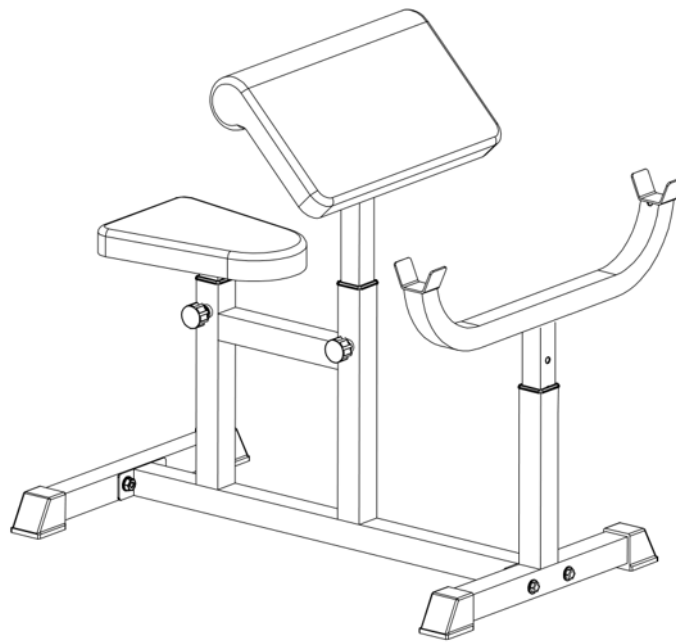




TITAN
FITNESS



OWNER'S MANUAL

MPN(s): PRCURL

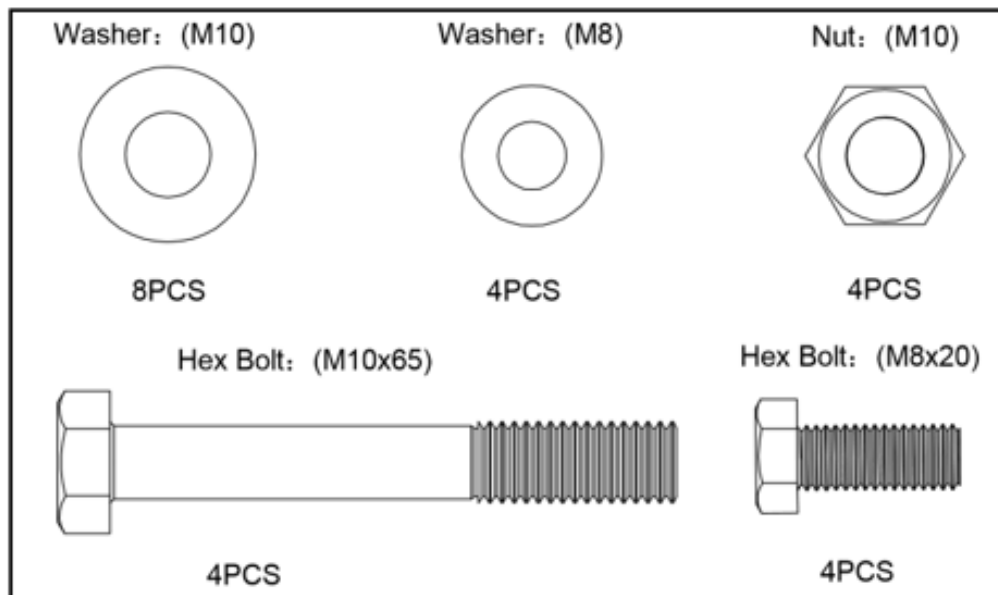
SKU(s): 400431

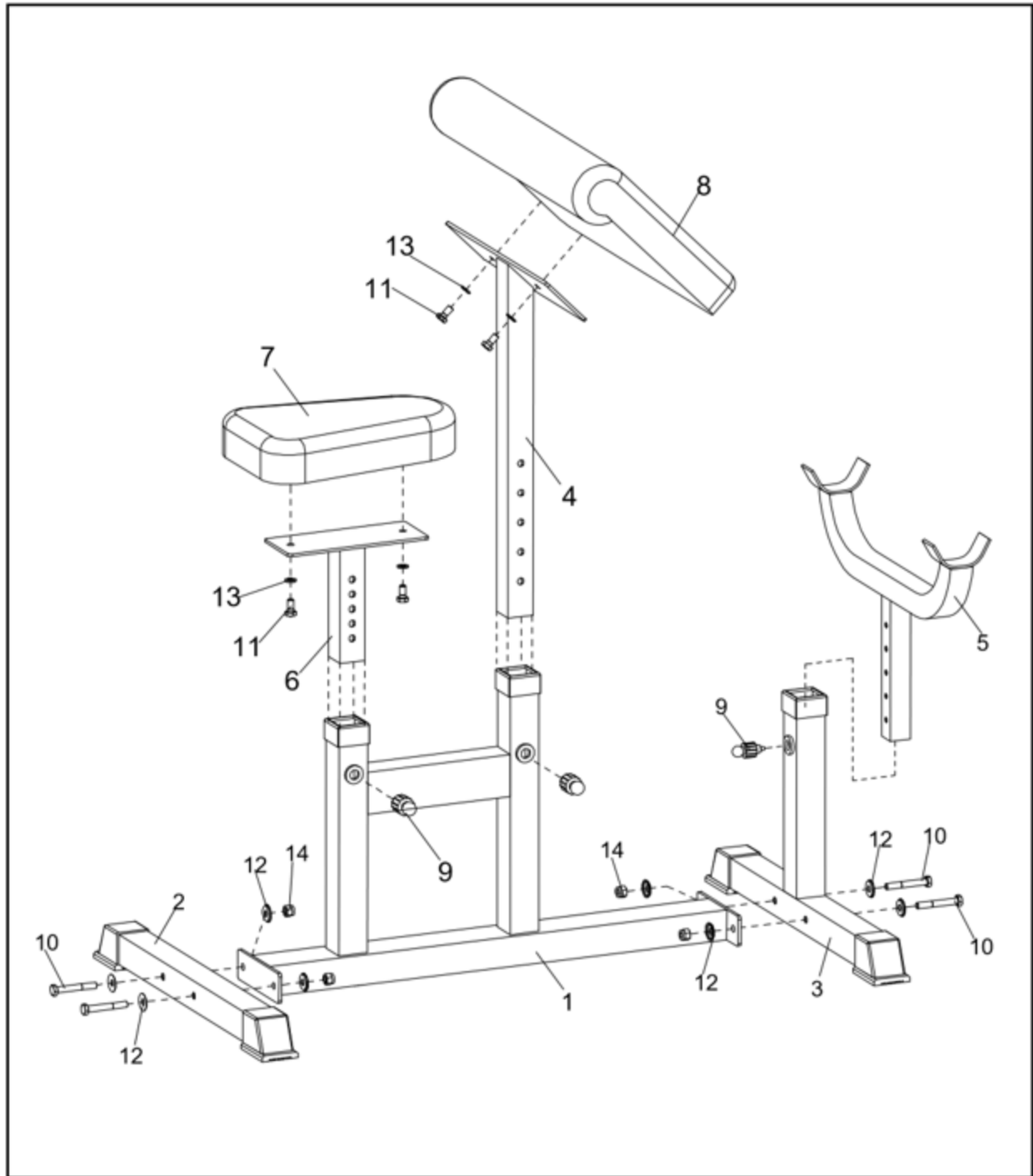
UPC(s): 049008262751

PARTS DIAGRAM / EXPLODED VIEW

KEY	BOX	DESCRIPTION	QTY
1	1	Main Frame	1
2	1	Back Base Tube	1
3	1	Front Base Tube	1
4	1	Arm Curl Frame	1
5	1	Barbell Frame	1
6	1	Seat Frame	1
7	1	Seat Cushion	1
8	1	Arm Curl Cushion	1
9	1	Quick Pin	3
10	1	Hex Bolt M10x65	4
11	1	Hex Bolt M8x20	4
12	1	Washer M10	8
13	1	Washer M8	4
14	1	Nut M10	4

HARDWARE LIST

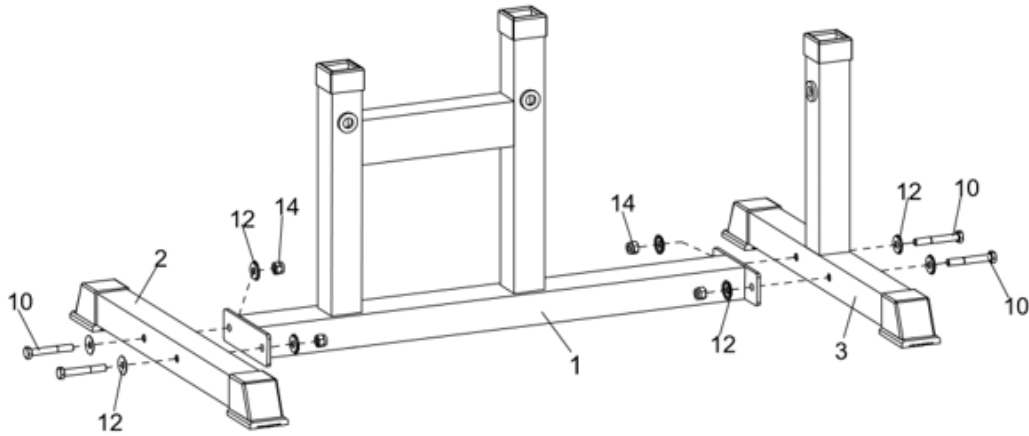




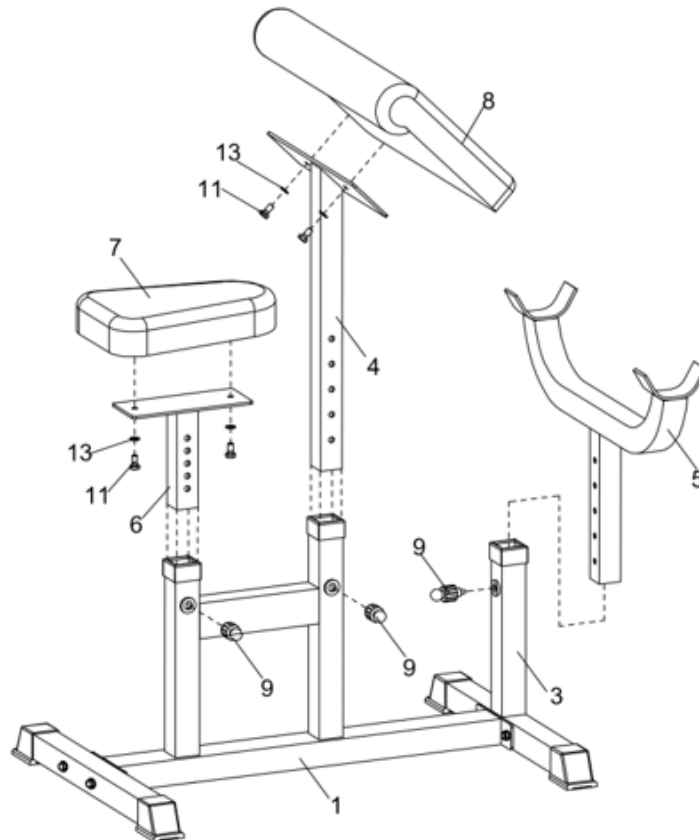
ASSEMBLY INSTRUCTIONS

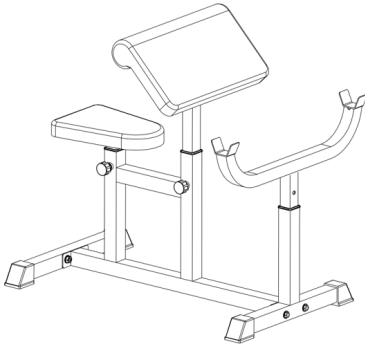
ASSEMBLY INSTRUCTIONS

1



2





This concludes the PRCURL Owner's Manual.

If applicable to your product, make sure to tighten all nut-and-bolt combinations before use.

Enjoy!

DISCLAIMER

This equipment must be used with care by capable and competent individuals under supervision, if necessary.

The use of any fitness equipment, including this one, involves the potential risk of injury. You accept and assume full responsibility for any and all injuries, damages (both economic and non-economic), and losses of any type, which may occur, and you fully and forever release and discharge Titan, its insurers, employees, officers, directors, associates, and agents from any and all claims, demands, damages, rights of action, or causes of action, present or future, whether the same be known or unknown, anticipated, or unanticipated, resulting from or arising out of the use of said equipment.

TITAN MAKES NO WARRANTY WHATSOEVER WITH RESPECT TO THE EQUIPMENT, INCLUDING ANY WARRANTY OF MERCHANTABILITY OR WARRANTY OF FITNESS FOR A PARTICULAR PURPOSE, WHETHER EXPRESS OR IMPLIED BY LAW, COURSE OF DEALING, COURSE OF PERFORMANCE, USAGE OF TRADE OR OTHERWISE. BUYER ASSUMES ALL LIABILITY IN USE OF THE EQUIPMENT.

NEED HELP?

CONTACT US FIRST.

1 (800) 605-8241

info@titandistributorsinc.com / www.titan.fitness

Business Hours: Monday–Friday • 8:00 a.m.–5:00 p.m. (CT)

