



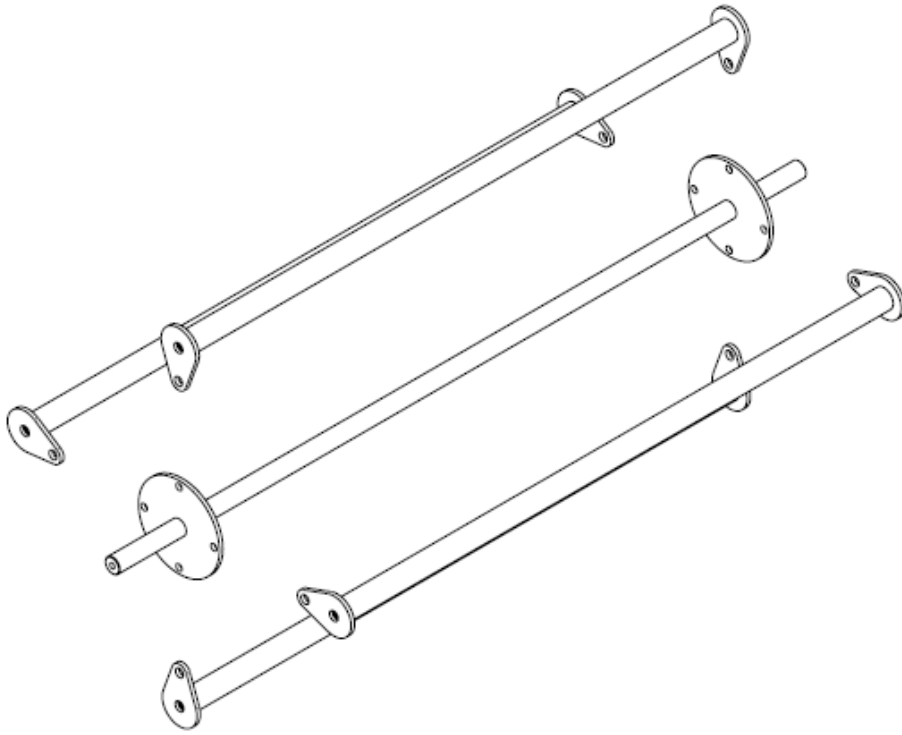
OWNER'S MANUAL

MPN(s): T3X3RVLFRM-RVLPUB, T3X3RVLFRM-RVLPUBFAT

SKU(s): 401310, 401308

UPC(s): 840009216428, 840009216404

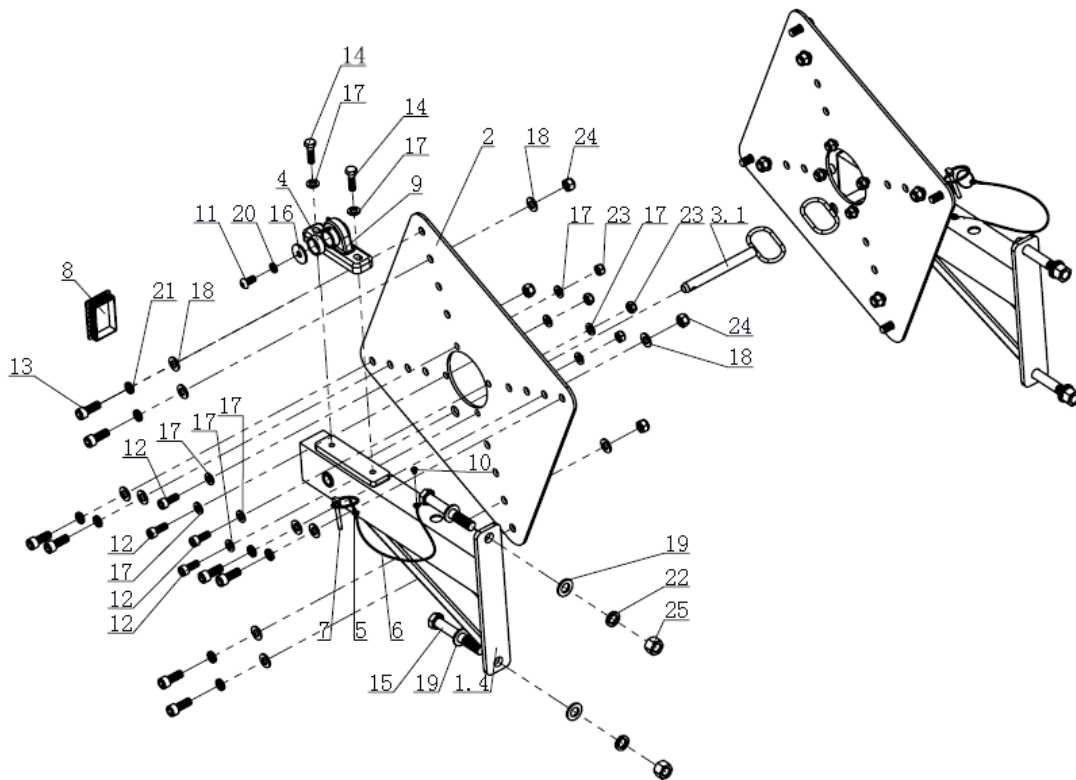
PARTS DIAGRAM / EXPLODED VIEW



KEY	BOX	DESCRIPTION	QTY
(26)	2	ROTATING SHAFT	2
(27)	2	1.25" OR 2" PULL-UP BARS	4



PARTS DIAGRAM / EXPLODED VIEW



KEY	BOX	DESCRIPTION	QTY	KEY	BOX	DESCRIPTION	QTY
(1)	1	Fixing Frame	2	(14)	1	Hex Bolt M10*35	4
(2)	1	Side Plate	2	(15)	1	Hex Bolt M16*110	4
(3)	1	Pin	2	(16)	1	Flat WasherΦ11*Φ34*3	2
(4)	1	Stopper Φ32*Φ25.2*13	2	(17)	1	Flat WasherΦ11*Φ20*2	20
(5)	1	Pull Ring Φ1.5*31	2	(18)	1	Flat WasherΦ13.5*Φ24*2.5	24
(6)	1	Cable Φ5.5*Φ1.6*330	2	(19)	1	Flat WasherΦ17*Φ30*3	8
(7)	1	Small Pin Φ6*45	2	(20)	1	Spring Washer Φ10	2
(8)	1	End Cap 50*75*3	2	(21)	1	Spring Washer Φ12	16
(9)	1	UCP205 Ball Bearing	2	(22)	1	Spring Washer Φ16	4
(10)	1	Cross Recess Head Screw M5*6	2	(23)	1	Nut M10	8
(11)	1	Pan Head, Allen Bolt M10*20	2	(24)	1	Nut M12	8
(12)	1	Button Head Screw M10*25	8	(25)	1	Flat Nut M16	4
(13)	1	Button Head Screw M12*30	16				

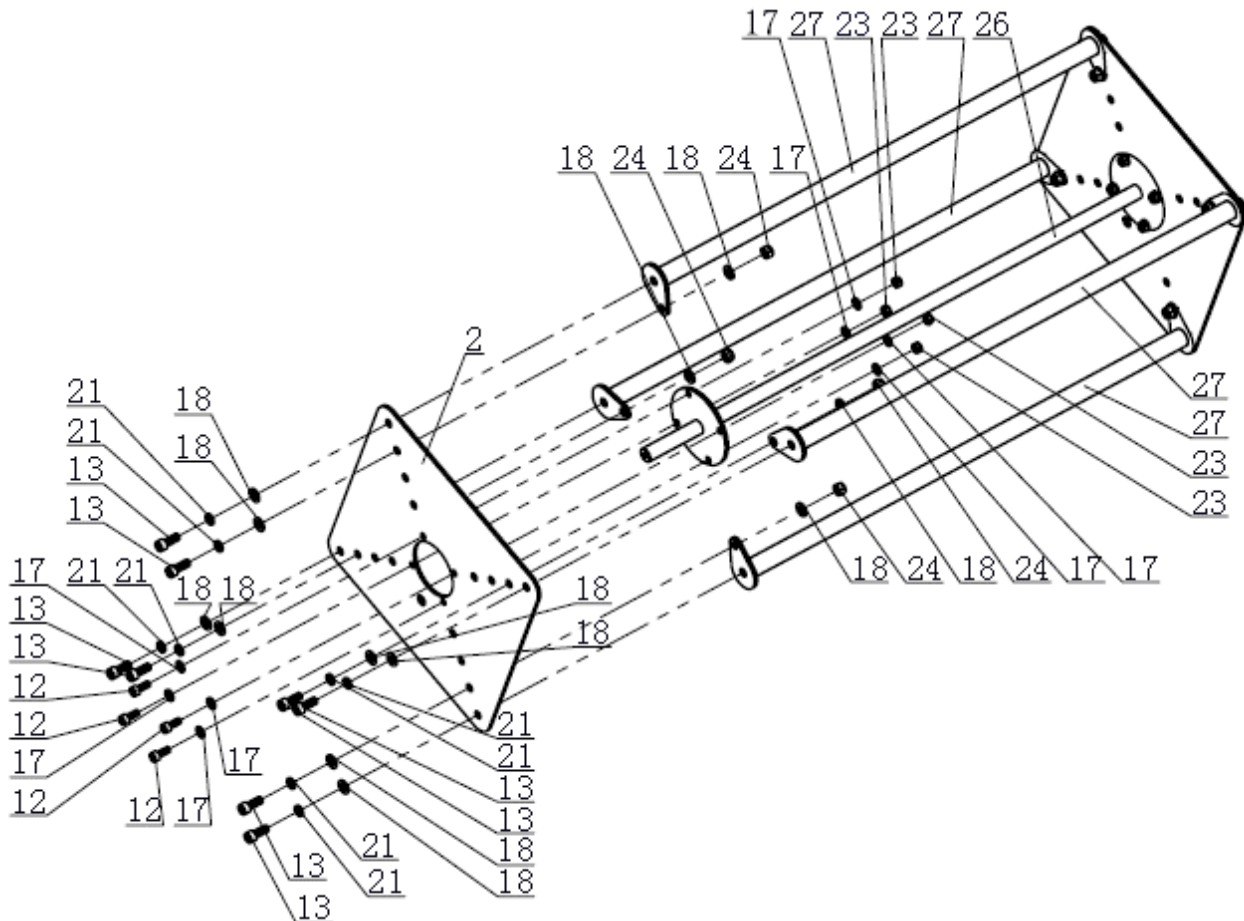


ASSEMBLY INSTRUCTIONS

STEP 1

1. Connect Side Plate (2) and Rotating Shaft (26), using Flat Washer $\Phi 11*\Phi 20*2$ (17), Nut M10(23), and Button Head Screw M10*25 (12).
2. Connect Side Plate (2) and Pull Up Bar (27), using Flat Washer $\Phi 13.5*\Phi 24*2.5$ (18), Nut M12(24), Spring Washer $\Phi 12$ (21) and Button Head Screw M12*30 (13).

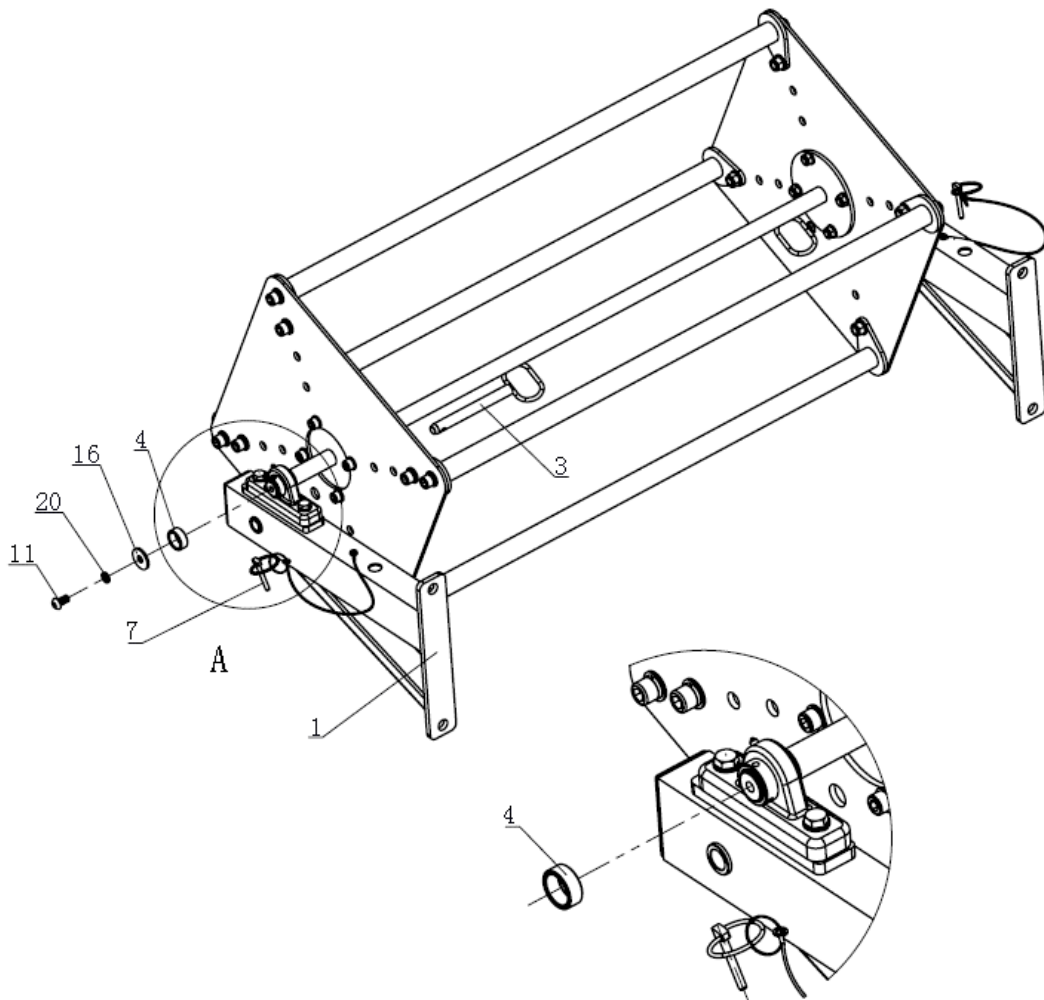
DON'T TIGHTEN THE BOLTS.



ASSEMBLY INSTRUCTIONS

STEP 2

1. Fixing the step 1 on the Fixing Frame (1), using Stopper (4), Flat Washer $\Phi 11*\Phi 34*3$ (16), Spring Washer $\Phi 10(20)$ and Pan Head, Allen Bolt M10*20 (11).
2. Insert the Pin (3) into the Side Plate (2) and Fixing Frame (1) from the inside, then fixing by the Small pin (7).
3. Adjust the product to level, tighten all the Bolts on Step 1.

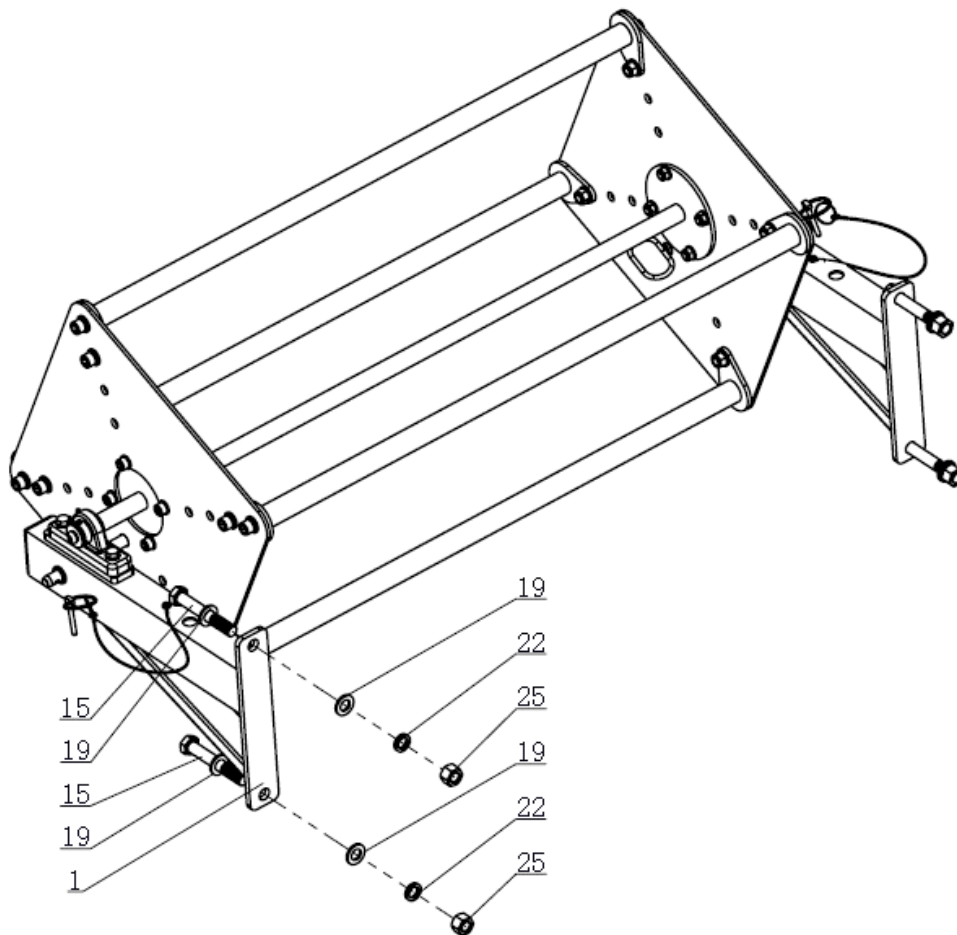


ASSEMBLY INSTRUCTIONS

STEP 3

1. Install the Step 2 on Power Rack, using Flat Washer $\Phi 17*\Phi 30*3$ (19), Hex Bolt M6*110 (15), Spring Washer $\Phi 16$ (22) and Nut M16 (25).

FINALLY TIGHTEN THE SCREWS ON THE BALL BEARING (9).





This concludes the T3X3RVLFRM

Owner's Manual.

*If applicable to your product, make sure to tighten
all nut-and-bolt combinations before use.*

Enjoy!

DISCLAIMER

This equipment must be used with care by capable and competent individuals under supervision, if necessary.

The use of any fitness equipment, including this one, involves the potential risk of injury. You accept and assume full responsibility for any and all injuries, damages (both economic and non-economic), and losses of any type, which may occur, and you fully and forever release and discharge Titan, its insurers, employees, officers, directors, associates, and agents from any and all claims, demands, damages, rights of action, or causes of action, present or future, whether the same be known or unknown, anticipated, or unanticipated, resulting from or arising out of the use of said equipment.

TITAN MAKES NO WARRANTY WHATSOEVER WITH RESPECT TO THE EQUIPMENT, INCLUDING ANY WARRANTY OF MERCHANTABILITY OR WARRANTY OF FITNESS FOR A PARTICULAR PURPOSE, WHETHER EXPRESS OR IMPLIED BY LAW, COURSE OF DEALING, COURSE OF PERFORMANCE, USAGE OF TRADE OR OTHERWISE. BUYER ASSUMES ALL LIABILITY IN USE OF THE EQUIPMENT.

NEED HELP?

CONTACT US FIRST.

1 (800) 605-8241

info@titandistributorsinc.com / www.titan.fitness

Business Hours: Monday–Friday • 8:00 a.m.–5:00 p.m. (CT)

