



**TITAN**  
*FITNESS*



## OWNER'S MANUAL

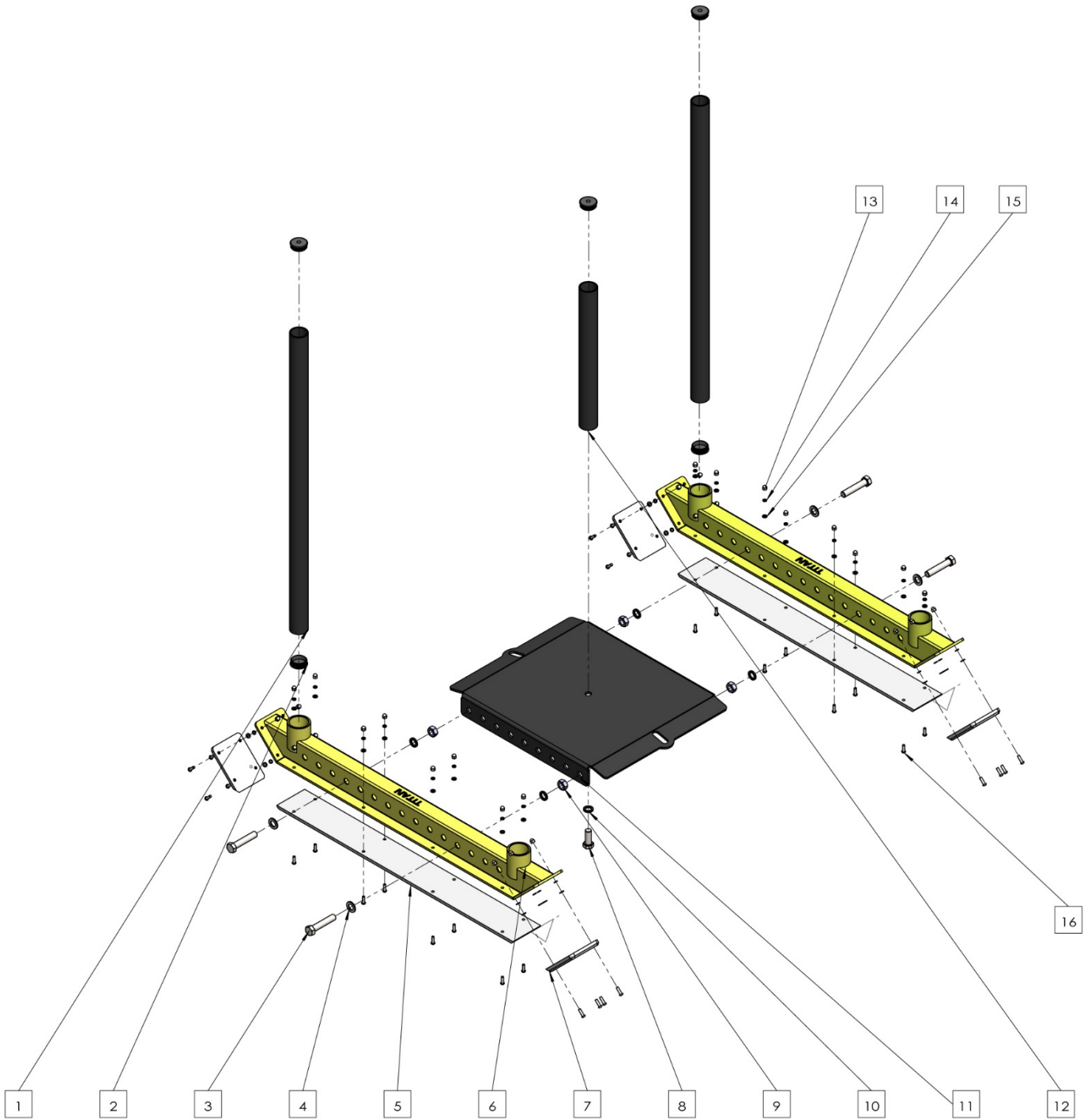
---

**MPN(s):** PROSLEDv2

**SKU(s):** 401374

**UPC(s):** 840009215605

# PARTS DIAGRAM / EXPLODED VIEW



<b>KEY</b>	<b>BOX</b>	<b>DESCRIPTION</b>	<b>QTY</b>
(1)		HANDLE TUBE	2
(2)		PLASTIC TUBE END CAP	5
(3)		HEX BOLT M16X80	4
(4)		FLAT WASHER M16	4
(5)		UHMW SKID SHOE - LONG	2
(6)		SIDE SLED	2
(7)		UHMW SKID SHOE - SHORT	4
(8)		HEX BOLT M16X40	1
(9)		HEX NUT M16	4
(10)		SPRING WASHER M16	5
(11)		CENTER MOUNTING BOARD	1
(12)		WEIGHT HOLDER TUBE	1
(13)		HEX CAP NUT M6	32
(14)		SPRING WASHER M6	32
(15)		FLAT WASHER M6	32
(16)		COUNTERSUNK DOME HEAD HEX BOLT M6X20	32



# ASSEMBLY INSTRUCTIONS

---

## STEP 1 – ATTACH SIDE SLED TO CENTER MOUNTING BOARD

- Align holes of the Center Mounting Board (11) with Side Sled (6) on the left and right sides.
- Attach them together using Hex Bolt M16x80 (3), Flat Washer M16 (4), Spring Washer M16 (10) and Hex Nut M16 (9) and fasten but do not tighten. The order of assembling is to push Hex Bolt M16x80 (3) through the holes, and then and then place Flat Washer M16 (4), Spring Washer M16 (10) and Hex Nut M16 (9) onto the end of the bolt. Tighten all hardware when both left and right sides are connected.

## STEP 2 – MOUNT WEIGHT TUBE TO CENTER MOUNTING BOARD

- Attach Weight Holder Tube (12), to the center of Center Mounting Board (11) using Hex Bolt M16x40 (8), Flat Washer M16 (4), and Spring Washer M16 (10) and tighten. The order of assembling is to push Hex Bolt M16x40 (8) through the holes, and then place Spring Washer M16 (10) onto the end of the bolt and tighten.

## STEP 3 – MOUNT UHMW SKID SHOES ONTO SIDE SLED

- Align holes of the UHMW Skid Shoe - Long (5) with Side Sled (6) at the bottom flat area. Attach them together using Countersunk Dome Head Hex Bolt M6x20 (16), Flat Washer M6 (15), Spring Washer M6 (14) and Hex Cap Nut M6 (13). The order of assembling is to push Countersunk Dome Head Hex Bolt M6x20 (16) through the holes, and then place Flat Washer M6 (15), Spring Washer M6 (14) and Hex Cap Nut M6 (13) onto the end of the bolt and tighten. Do this for the left and right sides.
- Align holes of the UHMW Skid Shoe - Short (7) with the sloping side of Side Sled (6). Attach them together using Countersunk Dome Head Hex Bolt M6x20 (16), Flat Washer M6 (15), Spring Washer M6 (14) and Hex Cap Nut M6 (13). The order of assembling is to push Countersunk Dome Head Hex Bolt M6x20 (16) through the holes, and then place Flat Washer M6 (15), Spring Washer M6 (14) and Hex Cap Nut M6 (13) onto the end of the bolt and tighten. Do this for the left and right, front, and back of all 4 sloping sides.





*This concludes the PROSLEDv2 Owner's Manual.*

*If applicable to your product, make sure to tighten all nut-and-bolt combinations before use.*

*Enjoy!*

### **DISCLAIMER**

This equipment must be used with care by capable and competent individuals under supervision, if necessary.

The use of any fitness equipment, including this one, involves the potential risk of injury. You accept and assume full responsibility for any and all injuries, damages (both economic and non-economic), and losses of any type, which may occur, and you fully and forever release and discharge Titan, its insurers, employees, officers, directors, associates, and agents from any and all claims, demands, damages, rights of action, or causes of action, present or future, whether the same be known or unknown, anticipated, or unanticipated, resulting from or arising out of the use of said equipment.

TITAN MAKES NO WARRANTY WHATSOEVER WITH RESPECT TO THE EQUIPMENT, INCLUDING ANY WARRANTY OF MERCHANTABILITY OR WARRANTY OF FITNESS FOR A PARTICULAR PURPOSE, WHETHER EXPRESS OR IMPLIED BY LAW, COURSE OF DEALING, COURSE OF PERFORMANCE, USAGE OF TRADE OR OTHERWISE. BUYER ASSUMES ALL LIABILITY IN USE OF THE EQUIPMENT.

**NEED HELP?**

**CONTACT US FIRST.**

**1 (800) 605-8241**

[info@titandistributorsinc.com](mailto:info@titandistributorsinc.com) / [www.titan.fitness](http://www.titan.fitness)

**Business Hours: Monday–Friday • 8:00 a.m.–5:00 p.m. (CT)**

