

# 71" HD SHEAR PIN PTO SHAFT

---

71HDSPTO

191600



## Operator's Manual

Read the Operator's Manual entirely. When you see this symbol, the subsequent instructions and warnings are serious follow without exception. Your life and the lives of others depend on it!

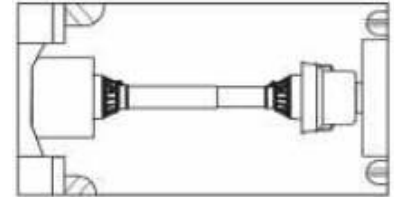
## SAFETY AND WORKING CONDITIONS

---

1. When utilizing the carry out and the driveline, don't surpass the speed or power limits determined in the administrator's manual. Try not to over-burden the carry out or out of nowhere connect with the PTO grip. Any force limiter or grasp should be introduced on the carry out finish of the driveline. Utilize the execute just with the first driveline, which is good for the reason as far as length, aspects, gadgets, and safeguards.



2. All turning parts should be safeguarded. The tractor master shield, the driveline guard, and the implement shield all work together for your safety. Try not to work without all driveline, tractor and implement shields in place. Harmed or missing parts should be fixed with unique extra parts or supplanted prior to utilizing the driveline. The driveline should be safely joined at the two finishes. Watches should turn uninhibitedly on the driveline.



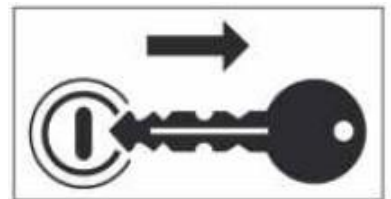
3. Guarantee that the driveline is securely attached to the tractor and the implement before operating. Check that all fixing screws are tight.



4. Stay far from the workspace and pivoting parts. Try not to wear free clothing, jewelry, or hair that could become trapped with the driveline. Contact with pivoting parts can cause genuine injury or demise.



5. Withdraw the PTO, turn off the tractor engine and eliminate key prior to moving toward the carry out or performing upkeep work.



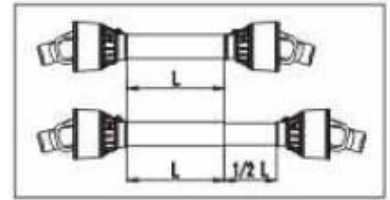
6. When utilized around evening time or in helpless perceivability enlighten the driveline working region.



7. Keep the driveline horizontal handling to prevent the halves from sliding apart, which could cause injury or harm the protecting. Utilize appropriate means to move substantial driveline.



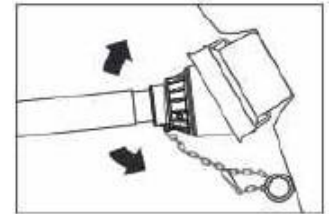
8. Extending tubes should consistently cover by no less than 1/2 of their length in typical activity and something like 1/3 of their length in every functioning condition. During moves, when the driveline isn't turning, the extending tubes should have an appropriate cross-over to keep up with the cylinders adjusted and permit then, at that point, to slide uninhibitedly.



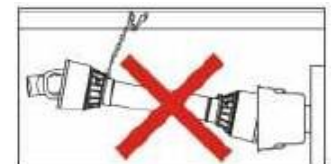
9. The driveline and its force limiter or invading grasp are planned explicitly for the carry out, and ought to be utilized solely for this reason. Check the execute guidance handbook to find out whether the driveline should be furnished with a force restricting or invading grip. Standard drivelines, force limiters and overwhelming grasps are intended for velocities of up to 1000 RPM.

10. Ensure that the driveline can perform all operations without interfering with the tractor or the machine. Contact with parts of the tractor, hooks, drive pins, tires, drawbar, hammer strap, or 3-point hitch, will damage the guard. Never use tractor, (or system for connection to the implement) that interfere with the driveline during operation. Do not use adapters or components not offered by the implement manufacturer.

11. Connect the driveline watch restraints(chains). Best outcomes are accomplished when chains are connected almost opposite to the driveline watch. Change the length of the jaws to permit sufficient leeway for full development of the driveline during turns, activity, and transport. Stay away from extreme leeway, which could make the chains roll around the driveline.



12. Never utilize the security chains to help the driveline for capacity. Continuously utilize the help on the execute.



13. Try not to remain on the driveline. Try not to venture over or go under the driveline.



14. Grinding grasp might become hot during use. Try not to contact! Keep the region around the contact grips clear of any material which could burst into flames and stay away from delayed slipping.



15. The tractor imprinted on the safeguard shows that tractor end of the driveline. Any wellbeing gadget ought to be introduced on the execute side.



## DRIVELINE INSTALLATION AND SHORTENING



### DANGER

Do not engage tractor PTO while hooking-up and unhooking driveline or stand near a rotating driveline. A person's body and /or clothing can be entangled.

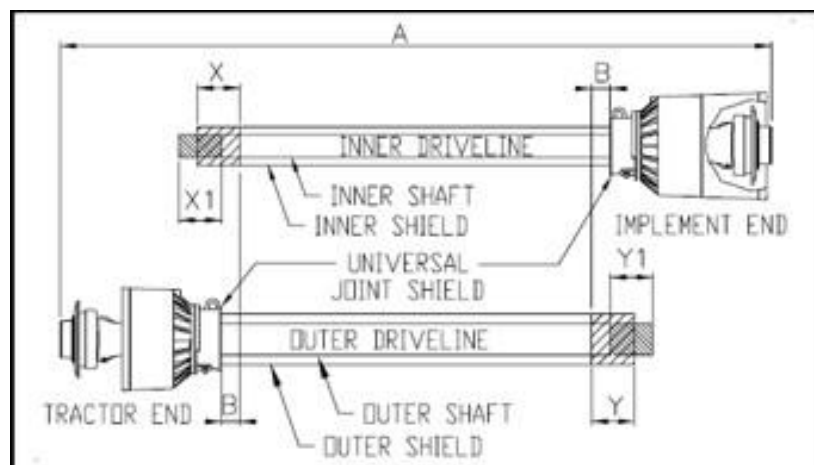
1. Slide driveline end with extended safety cone over spline shaft of gearbox and secure with attaching device.
2. Slide driveline over tractor's spline PTO shaft and secure with locking device of driveline.
3. Driveline should now be moved back and forth to ensure that it is secure on the PTO shaft of the tractor and flail mower gearbox.
4. Attach chain from the driveline shield to the upper hitch braces of the tractor and the flail mower to ensure that the shield does not rotate.
5. If driveline does not fit between the tractor and gearbox, refer to **"Shorten Driveline Length"**.

### CHECK DRIVELINE COLLAPSIBLE LENGTH

#### IMPORTANT:

Two small chains are supplied with the driveline to keep driveline shields from rotating. These chains must be attached to the outer and inner driveline shields and attach to the flail mower & tractor. A driveline that is too long will bottom out causing structural damage to the tractor and flail mower. Always check driveline collapsible length during initial setup and when connecting to a different tractor. More than one driveline may be required to fit all applications.

1. Make sure driveline is properly installed and level before checking driveline collapsible length.
2. For driveline level, measure 1" ("**B**" dimension) back from universal joint shield to the end of outer driveline shield. If measurement is 1" or more, skip **"Check Driveline Extended Length"**. If not, then continue with **"Short Driveline Length"**.



### SHORTEN DRIVELINE LENGTH

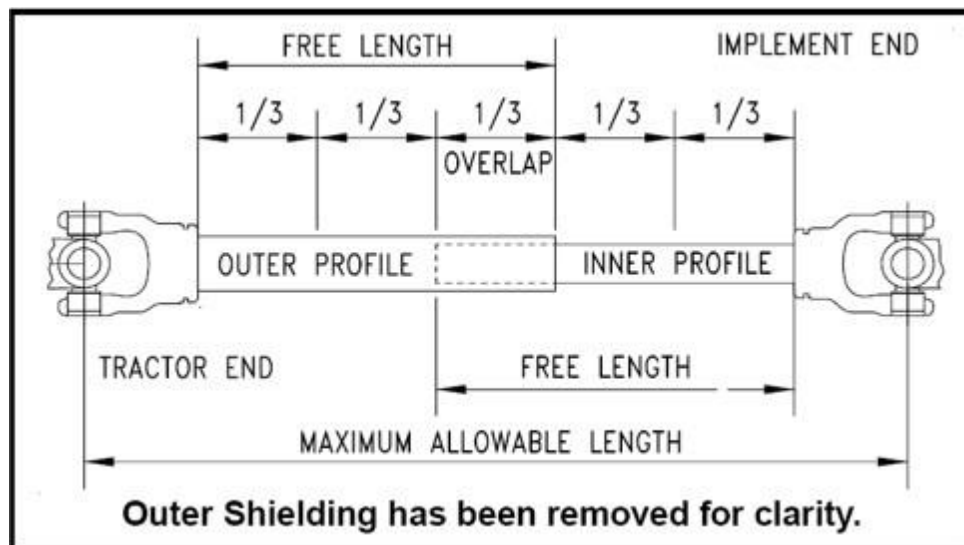
1. Un-hook driveline from tractor PTO shaft and pull outer and inner drivelines apart.
2. Reattach outer driveline to tractor PTO shaft. Pull on inner and outer drivelines to be sure universal joints are properly secured.
3. Hold inner and outer drivelines parallel to each other:
  - 3.1 Measure 1" ("B" dimension) back from outer driveline universal joint shield and make a mark at this location on the inner driveline shield.
  - 3.2 Measure 1" ("B" dimension) back from the inner driveline universal joint shield and make a mark at this location on the outer driveline shield.
4. Remove driveline from tractor and gearbox shafts.
5. Measure from end of inner shield to mark ("X" dimension). Cut off inner shield at the mark. Cut same amount off the inner shaft ("X1" dimension).
6. Measure from end of outer shield to mark ("Y" dimension). Cut off outer shield at the mark. Cut same amount off the outer shaft ("Y1" dimension).
7. Remove all burrs.
8. Check drive line extend length next.

### CHECK DRIVELINE EXTENDED LENGTH

Make sure driveline collapsible length is acceptable. If necessary, apply this action.

The driveline maximum allowable length must, when fully extended, have a minimum overlap of the profile tubes by not less than 1/3 the free length with both inner and outer profile tubes being of equal length.

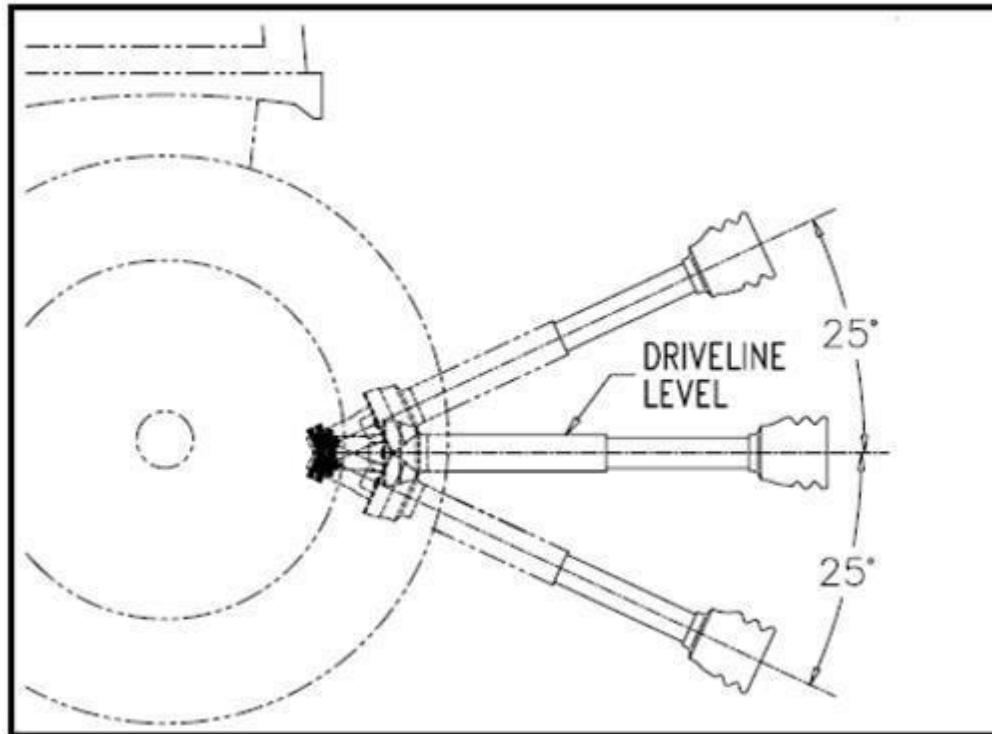
1. Apply multi-purpose grease to the inside of the outer shaft and reassemble the driveline.
2. Assemble driveline profiles together with 1/3 overlapping of inner and outer profile tubes. Once assembled, measure and record the maximum allowable length shown below for further reference.



3. Attach inner driveline yoke to the flail mower gearbox shaft and outer driveline yoke to the tractor PTO shaft and make sure universal joints are properly secured.
4. Attach chain from the driveline shield to the upper hitch braces of the tractor and the flail mower to ensure that the shield does not rotate.
5. Slowly engage tractor draw bar to lower flail mower. Check for sufficient drawbar clearance. Move drawbar ahead, aside or remove if required.

6. Raise and lower implement to find maximum extended driveline length. Check and make sure that the driveline overall length does not exceed the maximum recorded length in step 2.
7. If needed, set tractor draw bar height to keep driveline from exceeding maximum allowable length.

### CHECK DRIVELINE INTERFERENCE



1. Slowly engage tractor draw bar to lower flail mower while checking for sufficient drawbar clearance. Move draw bar ahead, aside, or remove if necessary.
2. Raise and lower implement to find maximum extended driveline length. Check to make sure the driveline does not exceed the maximum allowable length and 25° up or down.
3. If necessary, set tractor draw bar height to keep driveline from exceeding the maximum allowable length and 25° up.

The use of any equipment, including this one, involves the potential risk of injury. Apart from any warranty claim that might be presented for a claimed defect in material or workmanship of the product, you accept and assume full responsibility for any and all injuries, damages (both economic and non-economic), and losses of any type, which may occur, and you fully and forever release and discharge Titan, its insurers, employees, officers, directors, associates, and agents from any and all claims, demands, damages, rights of action, or causes of action, present or future, whether the same be known or unknown, anticipated, or unanticipated, resulting from or arising out of the use of said equipment.

This equipment must be used with care by capable and competent individuals under supervision, if necessary.

## WARNING

---



**Do not overfill!** Mower should be level when checking oil in gear box.



some activities might be able to cause electric shock



Sharp objects may be involved.  
Use protective cover during maintenance.

## TITAN LIMITED WARRANTY: TERMS, EXCLUSIONS AND LIMITATIONS OF REMEDIES

---

This product comes with a one (1) year limited warranty that can be found at [www.palletforks.com/warranty.html](http://www.palletforks.com/warranty.html). Please review the same for all details regarding the Titan Limited Warranty.

**THE TITAN LIMITED WARRANTY FOUND AT [WWW.PALLETFORKS.COM/WARRANTY.HTML](http://WWW.PALLETFORKS.COM/WARRANTY.HTML) IS EXCLUSIVE AND IS IN LIEU OF ALL OTHER WARRANTIES, EXPRESS OR IMPLIED, INCLUDING ANY IMPLIED WARRANTY OF MERCHANTABILITY AND/OR FITNESS FOR A PARTICULAR PURPOSE, EACH OF WHICH IS HEREBY DISCLAIMED.**



**NEED HELP? CONTACT US FIRST.**

**1-800-605-7595**

[info@palletworks.com](mailto:info@palletworks.com)  
[www.palletforks.com](http://www.palletforks.com)

© 2021 Titan Brands