

# 3PT PULVERIZER

60PULVERIZER, 72PULVERIZOR  
191408, 191412

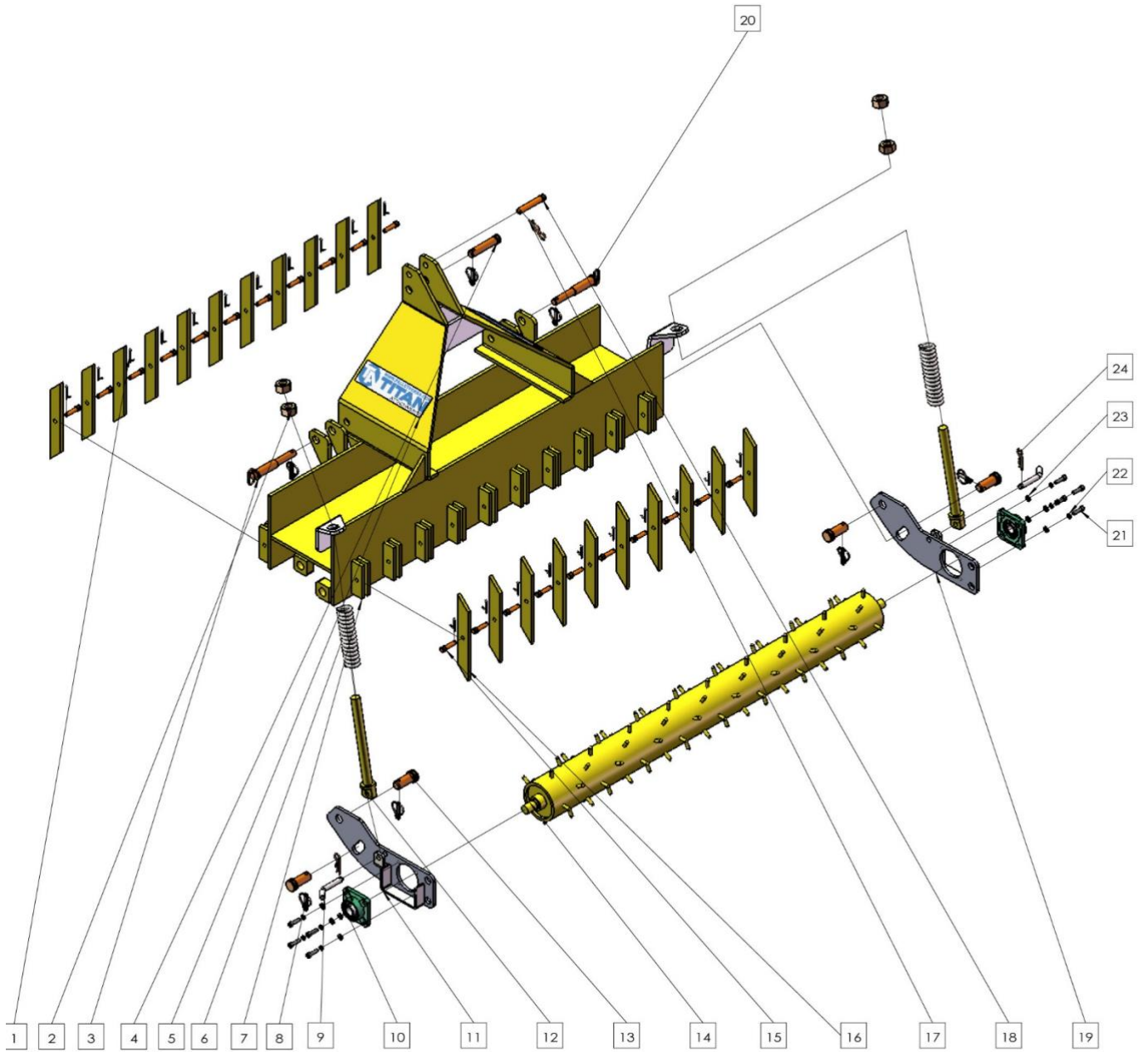


## Operator's Manual



Read the Operator's Manual entirely. When you see this symbol, the subsequent instructions and warnings are serious follow without exception. Your life and the lives of others depend on it!

# 60-INCH PARTS DIAGRAM / EXPLODED VIEW



## 60-INCH PARTS DIAGRAM / EXPLODED VIEW

---

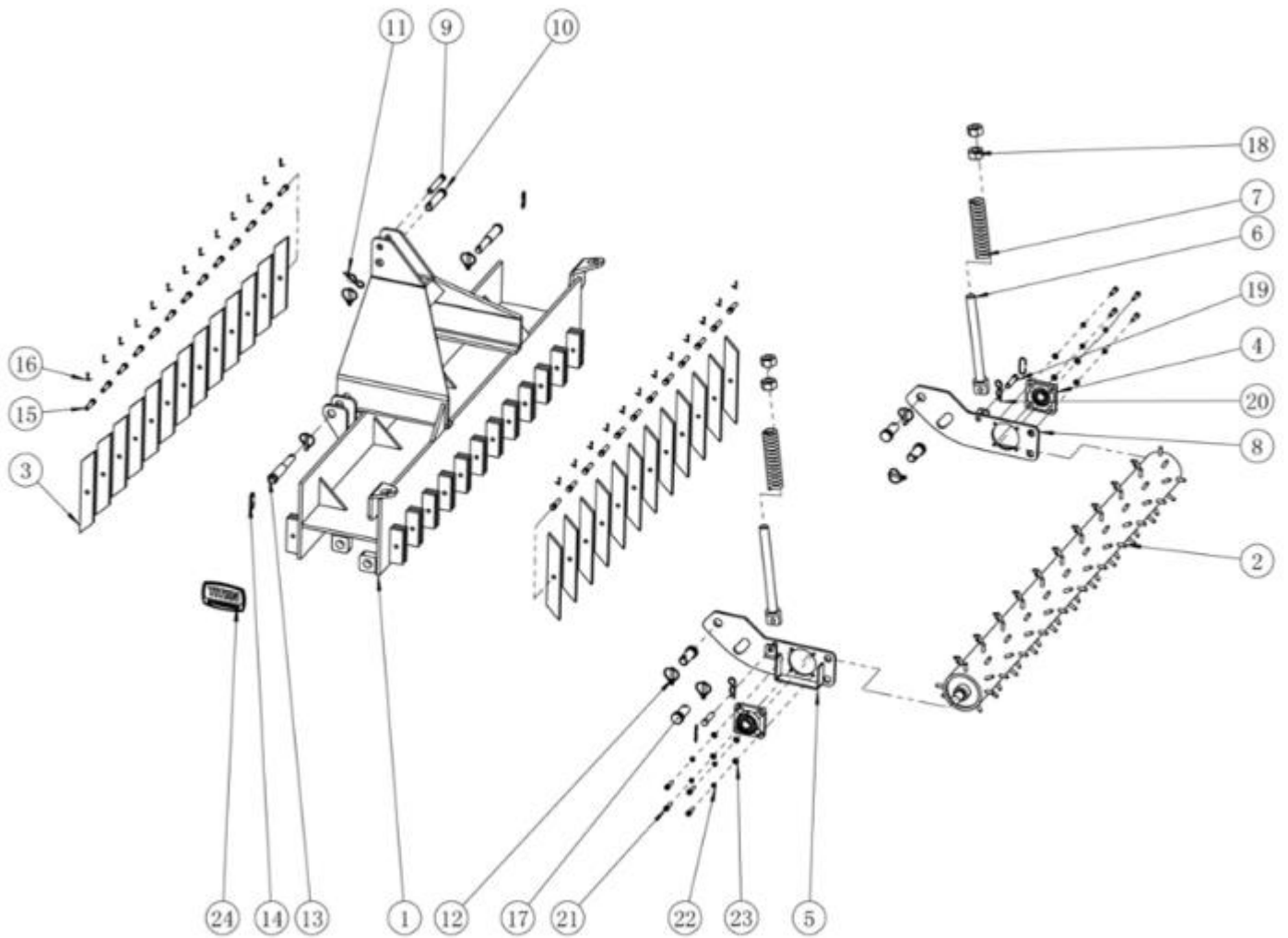
KEY	DESCRIPTION	QTY	KEY	DESCRIPTION	QTY
(1)	COTTER PIN 4x20	21	(13)	PIN SHAFT (STQ-8)	4
(2)	HEX NUT M30	4	(14)	SPIKE DRUM	1
(3)	CAT1/2 LOWER STEP PIN	2	(15)	RIPPER PIN	21
(4)	CAT1 UPPER PIN	1	(16)	SHANK RIPPER	21
(5)	TITAN ALUMINUM BADGE	2	(17)	COTTER PIN 4x70	1
(6)	SUSPENSION SPRING	2	(18)	CAT2 UPPER PIN	1
(7)	MAIN FRAME	1	(19)	COUPLING BRACKET-R	1
(8)	RETENTION PIN $\phi$ 9.5	7	(20)	PIN RING	2
(9)	L-SHAPE PIN	2	(21)	COUNTERSUNK COLUMN HEAD HEX BOLT M10x35	8
(10)	BALL BEARING	2	(22)	SPRING WASHER M10	8
(11)	COUPLING BRACKET-L	1	(23)	FLAT WASHER M10	8
(12)	SPRING SHAFT	2	(24)	COTTER PIN 3.7x65	2

## ASSEMBLY INSTRUCTIONS

---

- 60PULVERIZER COMES FULLY ASSEMBLED

# 72-INCH PARTS DIAGRAM / EXPLODED VIEW



## 72-INCH PARTS DIAGRAM / EXPLODED VIEW

---

KEY	DESCRIPTION	QTY	KEY	DESCRIPTION	QTY
(1)	MAIN FRAME	1	(13)	CAT1/2 STEP PIN	2
(2)	SPIKE DRUM	1	(14)	PIN HANDLE RING	4
(3)	SHANK RIPPER	25	(15)	RIPPER PIN	25
(4)	BALL BEARING	2	(16)	COTTER PIN 4x20	25
(5)	COUPLING BRACKET - LEFT	2	(17)	PIN SHAFT-1	4
(6)	SPRING SHAFT	2	(18)	HEXNUT M30	4
(7)	SUSPENSION SPRING	2	(19)	PIN SHAFT-2	2
(8)	COUPLING BRACKET - RIGHT	1	(20)	COTTER PIN 3.7x65	2
(9)	CAT1 UPPER PIN	1	(21)	COUNTERSUNK BUTTON HEAD HEX BOLT M10x35	8
(10)	CAT2 UPPER PIN	1	(22)	SPRING WASHER M10	8
(11)	COTTER PIN 4x70	1	(23)	FALT WASHER M10	8
(12)	RETENTION PIN $\phi$ 9.5	2	(24)	TITAN ATTACHMENT DECAL	2

## ASSEMBLY INSTRUCTIONS

---

- 72PULVERIZOR COMES FULLY ASSEMBLED

## ACKNOWLEDGEMENT OF RISK AND RELEASE OF LIABILITY

---

The use of any equipment, including this one, involves the potential risk of injury. Apart from any warranty claim that might be presented for a claimed defect in material or workmanship of the product, you accept and assume full responsibility for any and all injuries, damages (both economic and non-economic), and losses of any type, which may occur, and you fully and forever release and discharge Titan, its insurers, employees, officers, directors, associates, and agents from any and all claims, demands, damages, rights of action, or causes of action, present or future, whether the same be known or unknown, anticipated, or unanticipated, resulting from or arising out of the use of said equipment.

This equipment must be used with care by capable and competent individuals under supervision, if necessary.

## WARNING

---



**Do not overfill!** Mower should be level when checking oil in gear box.



some activities might be able to cause electric shock



Sharp objects may be involved.  
Use protective cover during maintenance.

## TITAN LIMITED WARRANTY: TERMS, EXCLUSIONS AND LIMITATIONS OF REMEDIES

---

This product comes with a one (1) year limited warranty that can be found at [www.palletforks.com/warranty.html](http://www.palletforks.com/warranty.html). Please review the same for all details regarding the Titan Limited Warranty.

**THE TITAN LIMITED WARRANTY FOUND AT [WWW.PALLETFORKS.COM/WARRANTY.HTML](http://WWW.PALLETFORKS.COM/WARRANTY.HTML) IS EXCLUSIVE AND IS IN LIEU OF ALL OTHER WARRANTIES, EXPRESS OR IMPLIED, INCLUDING ANY IMPLIED WARRANTY OF MERCHANTABILITY AND/OR FITNESS FOR A PARTICULAR PURPOSE, EACH OF WHICH IS HEREBY DISCLAIMED.**



**NEED HELP? CONTACT US FIRST.**

**1-800-605-7595**

[info@palletworks.com](mailto:info@palletworks.com)  
[www.palletforks.com](http://www.palletforks.com)

© 2021 Titan Brands