

TRIPLE RAMP 7.5' RAMP KIT

TRIP002v2

311912.1



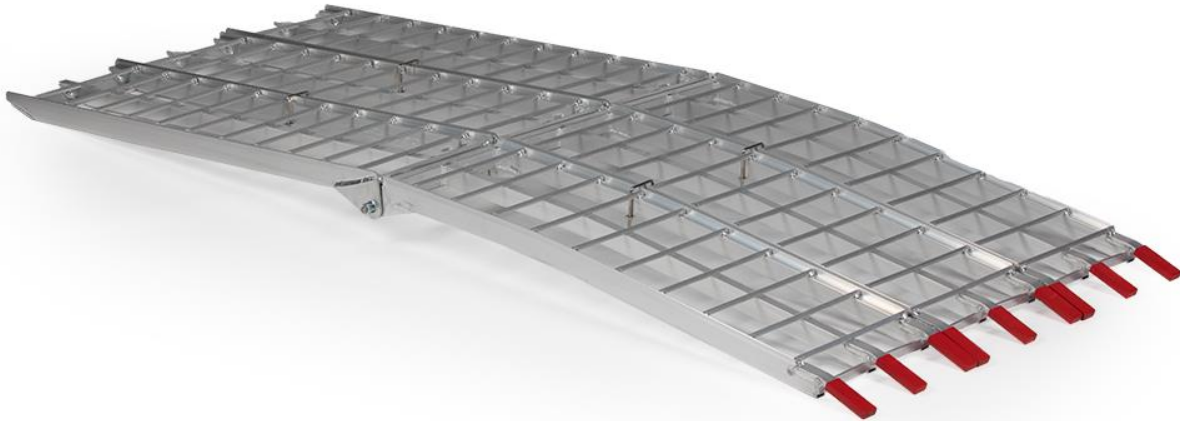
TITAN
RAMPS

Operator's Manual



Read the Operator's Manual entirely. When you see this symbol, the subsequent instructions and warnings are serious follow without exception. Your life and the lives of others depend on it!

PARTS DIAGRAM / EXPLODED VIEW



KEY	BOX	DESCRIPTION	QTY
(1)	1	SAFETY STRAP	3
(2)	1	HINGE BOLT	6
(3)	1	HINGE NUT	6
(4)	1	HINGE WASHER	6
(5)	1	FIXING PIN	6
(6)	1	U-BOLT	4
(7)	1	SPACER	4
(8)	1	BRACKET NUT	8
(9)	1	FIXING STICK	1
(10)	1	NUT	2
(11)	1	WASHER	2

SAFETY WARNING: Maximum recommended loading height is 35".
Do not exceed this loading height.
Do not exceed Weight Capacity: 2100 LB.

ASSEMBLY INSTRUCTIONS

STEP 1

Remove hinge bolt, hinge nut, hinge washer and fixing pin after unpacking the ramps.

STEP 2

Install long fixing stick. Insert stick into holes on ramps and fix washer and nuts.



STEP 3

Install bracket. Fix two ramp rails with U-bolt, spacers, and nuts.



ACKNOWLEDGEMENT OF RISK AND RELEASE OF LIABILITY

The use of any equipment, including this one, involves the potential risk of injury. Apart from any warranty claim that might be presented for a claimed defect in material or workmanship of the product, you accept and assume full responsibility for any and all injuries, damages (both economic and non-economic), and losses of any type, which may occur, and you fully and forever release and discharge Titan, its insurers, employees, officers, directors, associates, and agents from any and all claims, demands, damages, rights of action, or causes of action, present or future, whether the same be known or unknown, anticipated, or unanticipated, resulting from or arising out of the use of said equipment.

This equipment must be used with care by capable and competent individuals under supervision, if necessary.

TITAN LIMITED WARRANTY: TERMS, EXCLUSIONS AND LIMITATIONS OF REMEDIES

This product comes with a one (1) year limited warranty that can be found at www.titanramps.com/warranty.html. Please review the same for all details regarding the Titan Limited Warranty.

THE TITAN LIMITED WARRANTY FOUND AT WWW.TITANRAMPS.COM/WARRANTY.HTML IS EXCLUSIVE AND IS IN LIEU OF ALL OTHER WARRANTIES, EXPRESS OR IMPLIED, INCLUDING ANY IMPLIED WARRANTY OF MERCHANTABILITY AND/OR FITNESS FOR A PARTICULAR PURPOSE, EACH OF WHICH IS HEREBY DISCLAIMED.



NEED HELP? CONTACT US FIRST.

1-800-605-7555

info@titanramps.com

www.titanramps.com

© 2021 Titan Brands