

LIVE FIRE GRILL

LFG30

899886



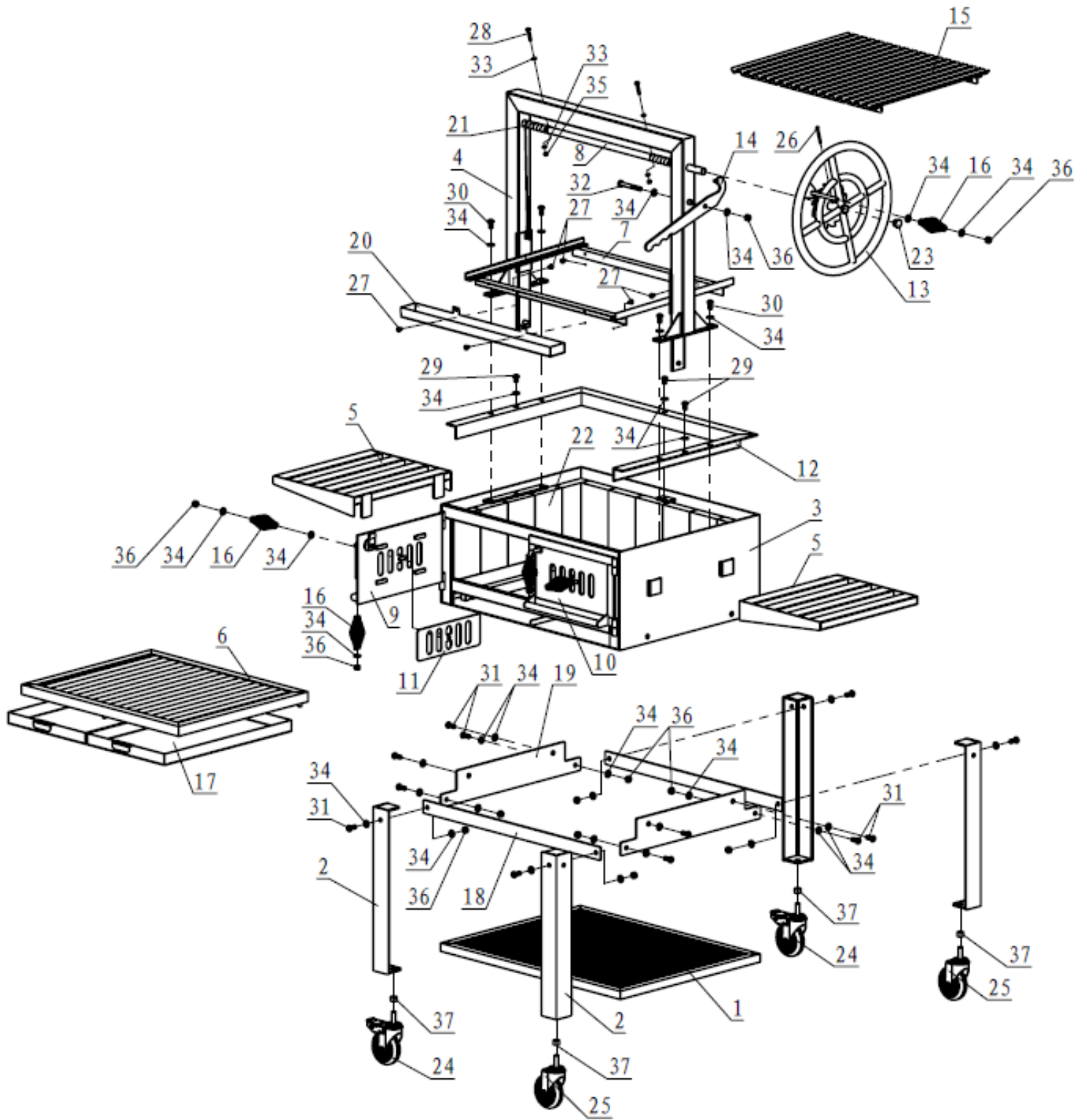
TITAN
GREAT OUTDOORS

Operator's Manual



Read the Operator's Manual entirely. When you see this symbol, the subsequent instructions and warnings are serious follow without exception. Your life and the lives of others depend on it!

PARTS DIAGRAM / EXPLODED VIEW



PARTS DIAGRAM LIST

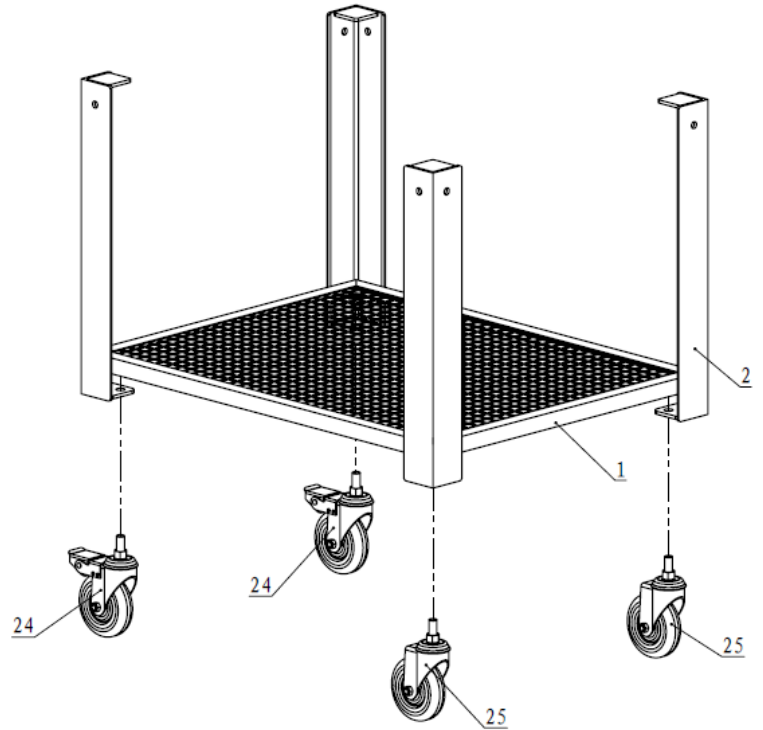
KEY	BOX	DESCRIPTION	QTY
(1)	1	PALLET FRAME	1
(2)	1	UPRIGHT FRAME	4
(3)	1	TOASTER OVEN	1
(4)	1	HIGHER UPRIGHT FRAME	1
(5)	1	SIDE FRAME	2
(6)	1	HEARTH PLATE	1
(7)	1	GRIDIRON	1
(8)	1	ROTATION TUBE WELDMENT	1
(9)	1	LEFT DOOR WELDMENT	1
(10)	1	RIGHT DOOR WELDMENT	1
(11)	1	VENTILATION DOOR WELDMENT	2
(12)	1	FIXING FRAME	1
(13)	1	ADJUSTABLE DIAL WELDMENT	1
(14)	1	PAWL PLATE WELDMENT	1
(15)	1	STAINLESS STEEL GRIDIRON	1
(16)	1	SPRING $\Phi 40 \times \Phi 3 \times 100$	5
(17)	1	CHARCOAL ASH BOX 528*322*35*1.5	2
(18)	1	FRONT BOARD 736*40*4	2
(19)	1	SIDE BOARD 580*100*4	2
(20)	1	OIL GROOVE 620*60*50*1	1
(21)	1	STAINLESS STEEL WIRE ROPE $\Phi 2 \times 530$	2
(22)	1	FIREBRICK 229*112*34	16
(23)	1	END CAP $\Phi 25 \times 2.5$	1
(24)	1	BRAKE WHEEL $\Phi 100 \times M12$	2
(25)	1	WHEEL $\Phi 100 \times M12$	2
(26)	1	COTTER PIN $\Phi 5 \times 40$	1
(27)	1	CROSS RECESS PAN HEAD BOLT M6*10	6
(28)	1	CROSS RECESS PAN HEAD BOLT M6*35	2
(29)	1	PAN HEAD, HEX BOLT M10*15	3
(30)	1	PAN HEAD, HEX BOLT M10*20	4
(31)	1	PAN HEAD, HEX BOLT M10*25	12
(32)	1	HEX HEAD BOLT M10*80	1
(33)	1	FLAT WASHER $\Phi 6.6 \times \Phi 12 \times 1.6$	4
(34)	1	FLAT WASHER $\Phi 11 \times \Phi 20 \times 2$	37
(35)	1	NUT M6	2
(36)	1	NUT M10	14
(37)	1	FLAT NUT M12	4

ASSEMBLY INSTRUCTIONS

STEP 1

Assemble Pallet Frame (1), Upright Frame (2), Brake Wheel $\Phi 100 \times M12$ (24) and Wheel $\Phi 100 \times M12$ (25).

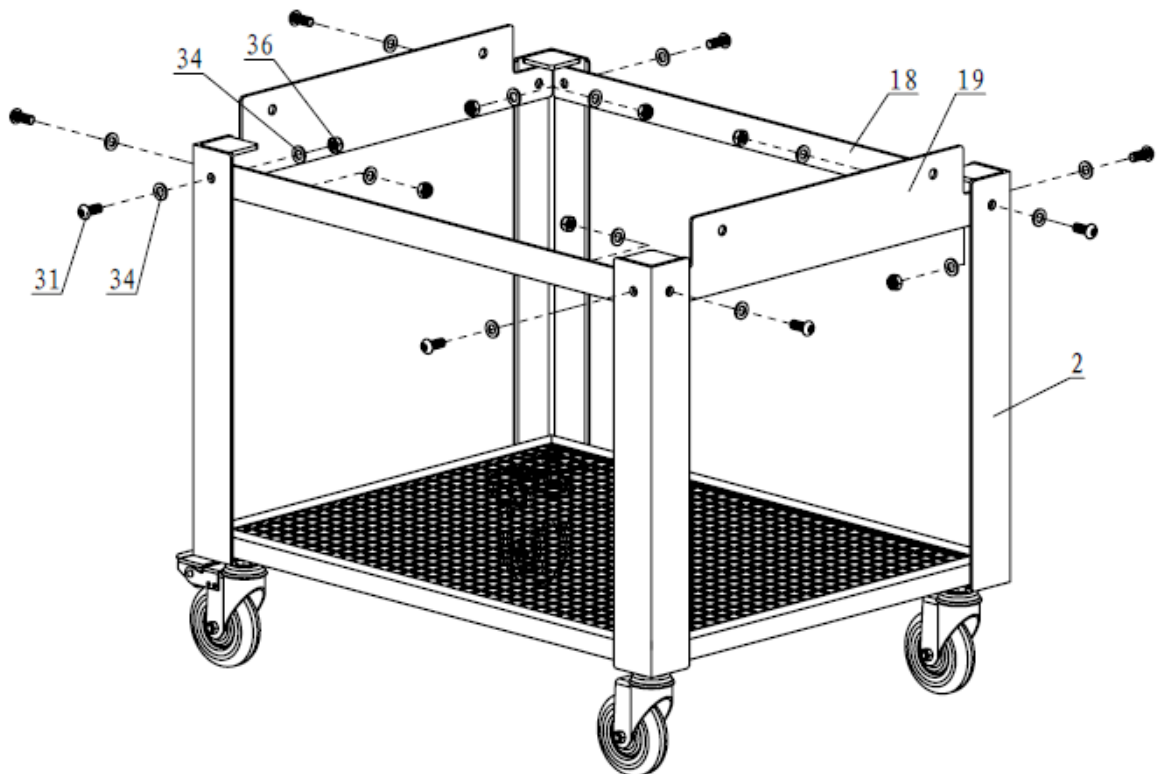
DON'T TIGHTEN THE BOLTS.



STEP 2

Fix the Front Board (18), Side Board (19) with Upright Frame (2) using Pan Head, Hex Bolt M10*25 (31), Flat Washer $\Phi 11 \times \Phi 20 \times 2$ (34) and Nut M10 (36).

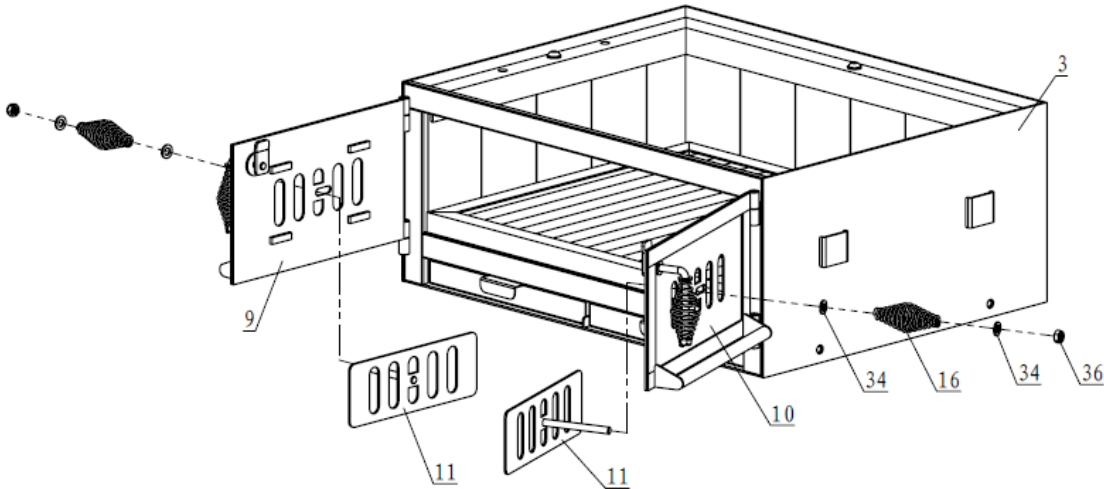
PLEASE TIGHTEN ALL THE BOLTS AND NUTS.



STEP 3

Fix the Ventilation Door Weldment (11) , Spring $\Phi 40*\Phi 3*100$ (16)to the Left Door Weldment (9)and Right Door Weldment (10) using Flat Washer $\Phi 11*\Phi 20*2$ (34)and Nut M10(36).

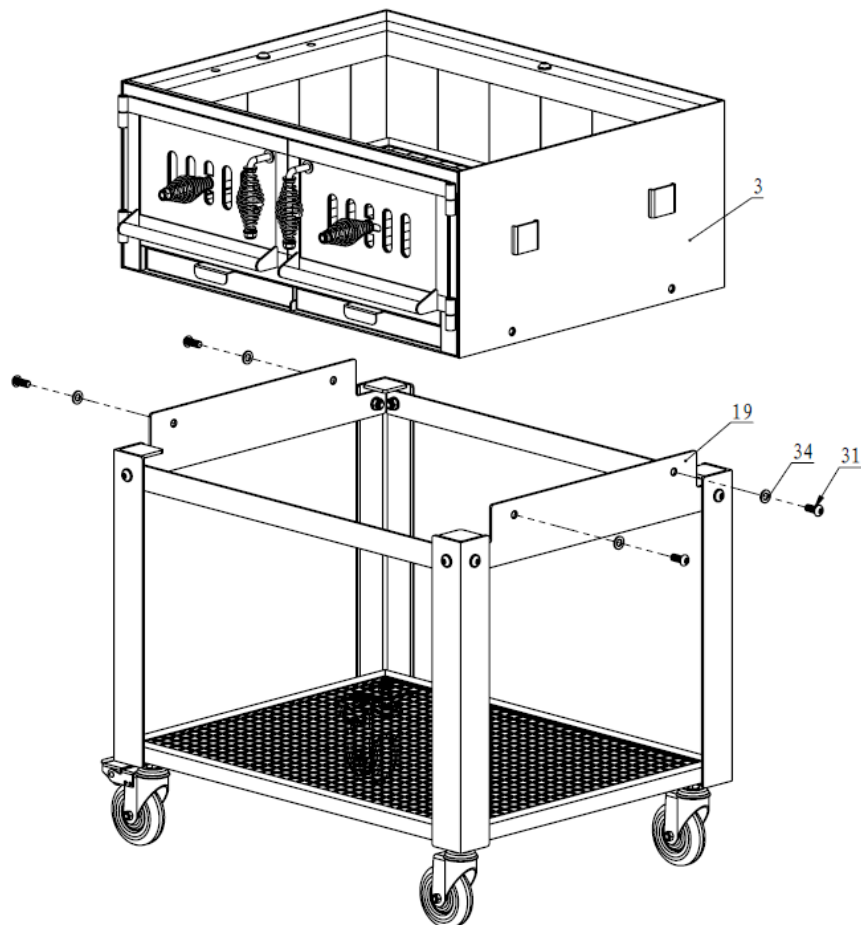
PLEASE TIGHTEN ALL THE BOLTS AND NUTS.



STEP 4

Fix the Toaster Oven (3) to the Side Board (19), using Pan Head, Hex Bolt M10*25 (31) and Flat Washer $\Phi 11*\Phi 20*2$ (34).

PLEASE TIGHTEN ALL THE BOLTS AND NUTS.

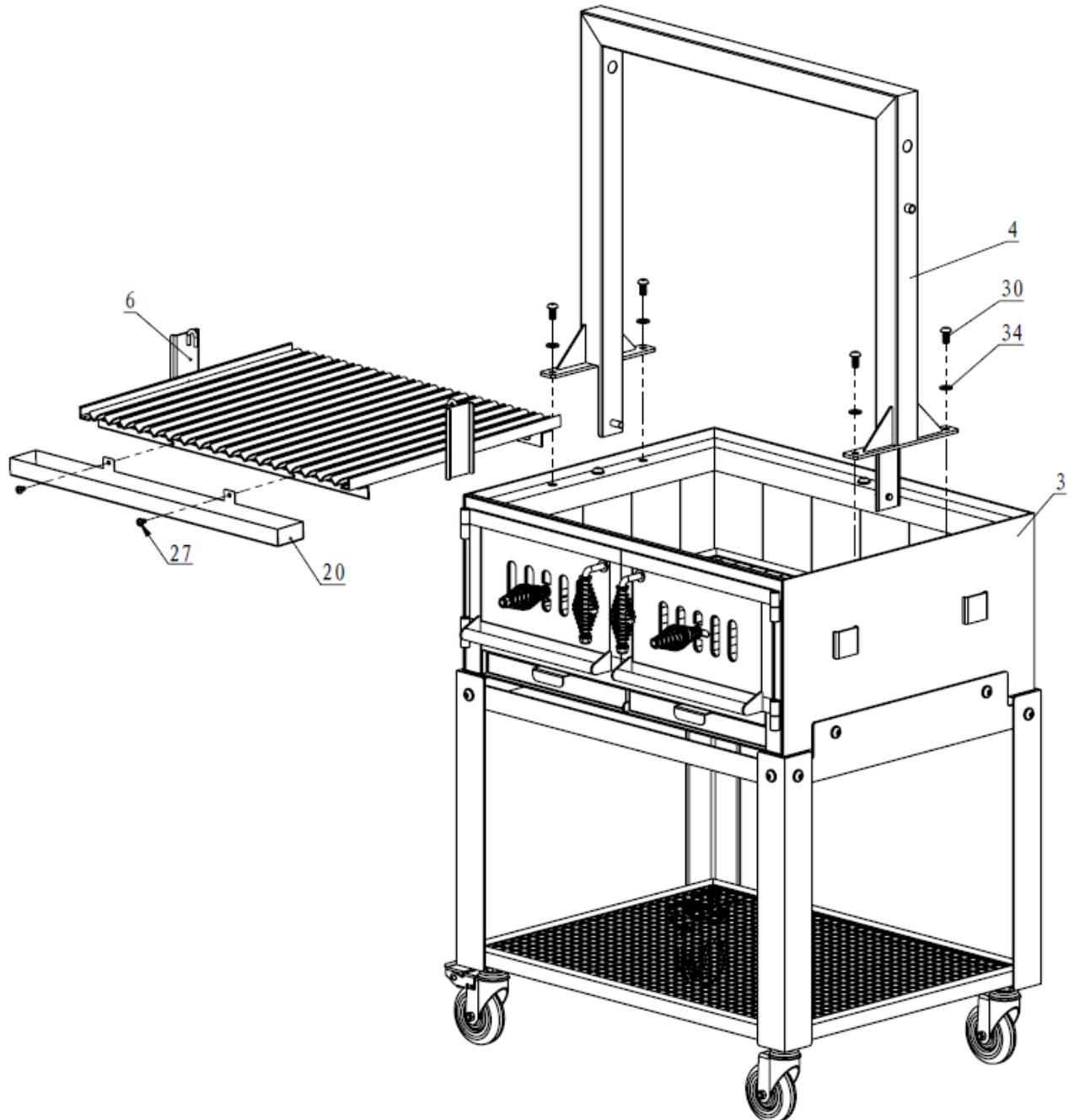


STEP 5

1. Install Higher Upright Frame (4) on the Toaster Oven (3), using Pan Head, Hex Bolt M10*20 (30) and Flat Washer $\Phi 11*\Phi 20*2$ (34).

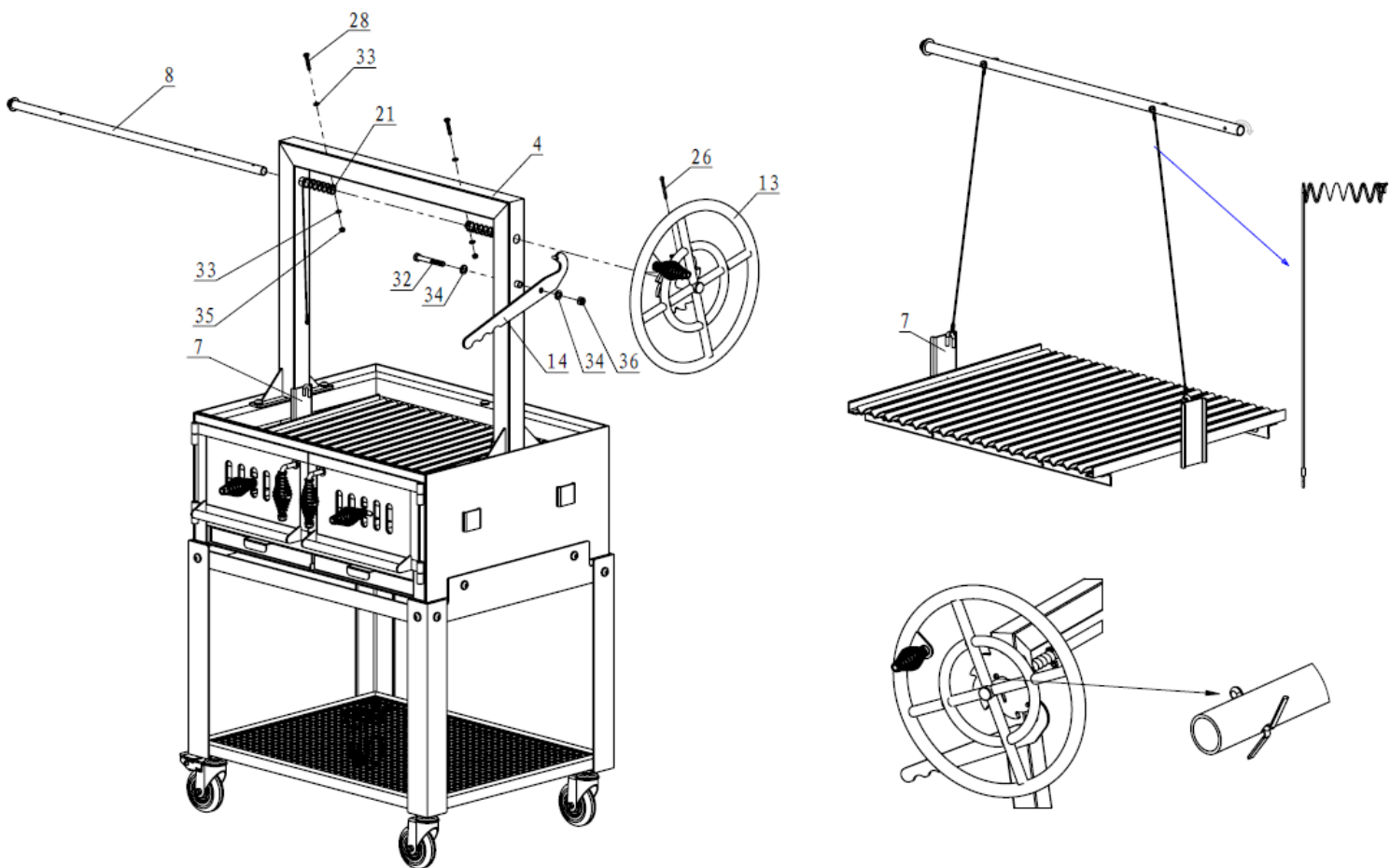
PLEASE TIGHTEN ALL THE BOLTS AND NUTS.

2. Install Oil Groove (20) on the Hearth Plate (6), using Pan Head, Hex Bolt M6* (27) and Flat Washer $\Phi 11*\Phi 20*2$ (34). Then put the Hearth Plate (6) in the middle of Higher Upright Frame (4), Ensure smooth sliding up and down and don't break away from the guide tube.



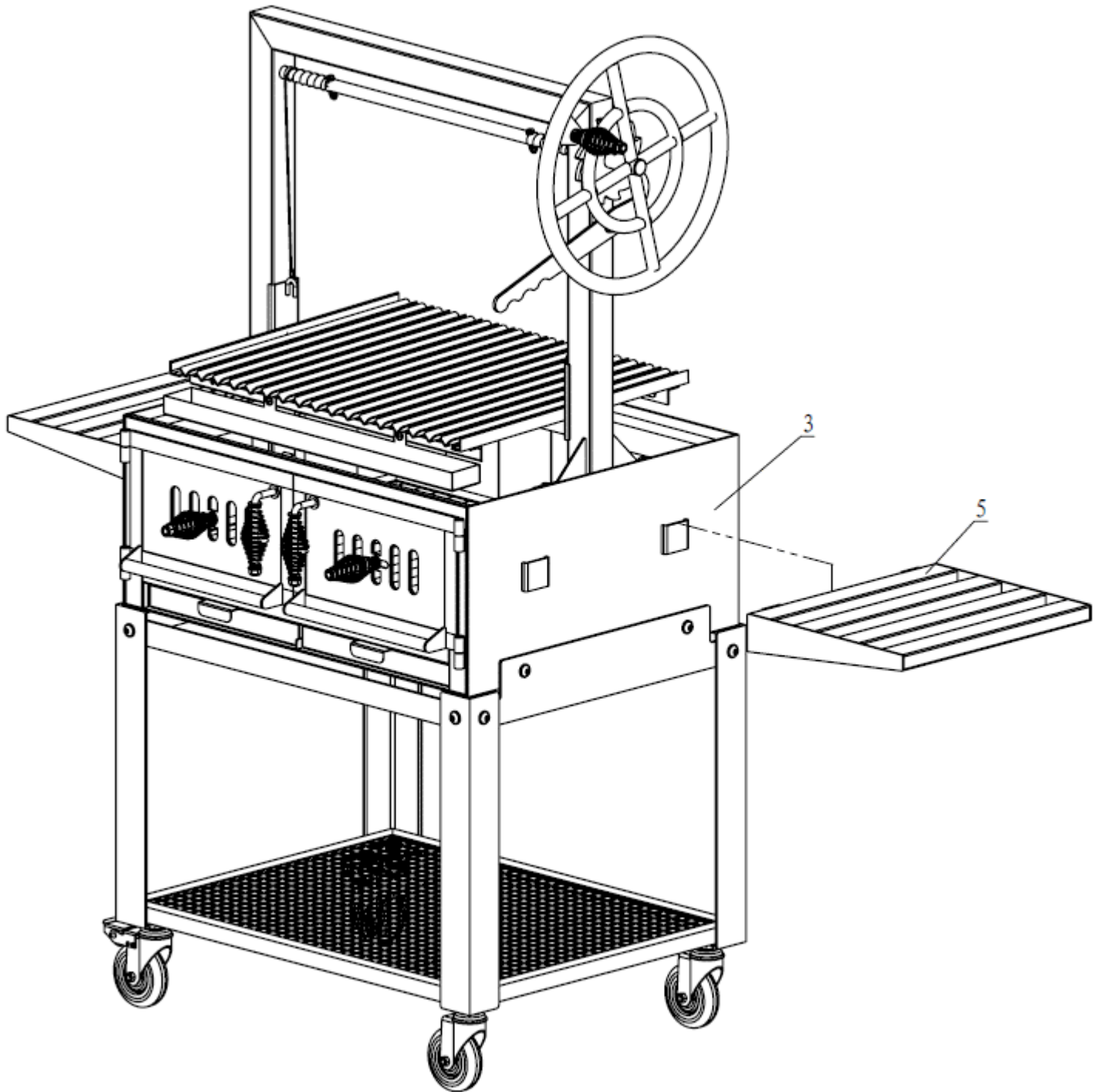
STEP 6

1. Put the Rotation Tube Weldment (8) through the hole in the Higher Upright Frame (4), fix the Adjustable Dial Weldment (13) to Rotation Tube Weldment (8) using Cotter Pin $\Phi 5 \times 40$ (26).
2. Install the Pawl Plate Weldment (14) on Higher Upright Frame (4), using Hex Head Bolt M10*80 (32), Flat Washer $\Phi 11 \times \Phi 20 \times 2$ (34) and Nut M10 (36).
3. Install Stainless Steel Wire Rope (21) on the Rotation Tube Weldment (8), using Cross Recess Pan Head Bolt M6*35 (28), Flat Washer $\Phi 6.6 \times \Phi 12 \times 1.6$ (33) and Nut M6 (35). The Flat Washer $\Phi 6.6 \times \Phi 12 \times 1.6$ (33) should press the Stainless-Steel Wire Rope (21) and don't fall off. Then attach the other end of the Stainless-Steel Wire Rope (21) to a hook on the Gridiron (7). According to the picture spinning the Adjustable Dial Weldment (13), let Stainless-Steel Wire Rope (21) wrap around the Rotation Tube Weldment (8), adjust the Pawl Plate Weldment (14) to fix ratchet wheel.



STEP 7

Put the two Side Frame (5) on the Toaster Oven (3). Please tighten all the bolts and nuts.



ACKNOWLEDGEMENT OF RISK AND RELEASE OF LIABILITY

The use of any equipment, including this one, involves the potential risk of injury. Apart from any warranty claim that might be presented for a claimed defect in material or workmanship of the product, you accept and assume full responsibility for any and all injuries, damages (both economic and non-economic), and losses of any type, which may occur, and you fully and forever release and discharge Titan, its insurers, employees, officers, directors, associates, and agents from any and all claims, demands, damages, rights of action, or causes of action, present or future, whether the same be known or unknown, anticipated, or unanticipated, resulting from or arising out of the use of said equipment.

This equipment must be used with care by capable and competent individuals under supervision, if necessary.

WARNING



Heavy object. Use lifting aids and proper lifting techniques when moving.



Choking hazard. Small parts – Please exercise caution if small children or pets are present.



Sharp objects may be involved. Use precaution and protection.

TITAN LIMITED WARRANTY: TERMS, EXCLUSIONS AND LIMITATIONS OF REMEDIES

This product comes with a one (1) year limited warranty that can be found at www.titangreatoutdoors.com/warranty.html. Please review the same for all details regarding the Titan Limited Warranty.

THE TITAN LIMITED WARRANTY FOUND AT WWW.TITANGREATOUTDOORS.COM/WARRANTY.HTML IS EXCLUSIVE AND IS IN LIEU OF ALL OTHER WARRANTIES, EXPRESS OR IMPLIED, INCLUDING ANY IMPLIED WARRANTY OF MERCHANTABILITY AND/OR FITNESS FOR A PARTICULAR PURPOSE, EACH OF WHICH IS HEREBY DISCLAIMED.



NEED HELP? CONTACT US FIRST.

1-888-794-1455

info@titangreatoutdoors.com

www.titangreatoutdoors.com

© 2021 Titan Brands