

ALUMINUM ATV STAND WITH RAMPS

ATVSTAND-ATV001

332024



Operator's Manual

TITAN
RAMPS

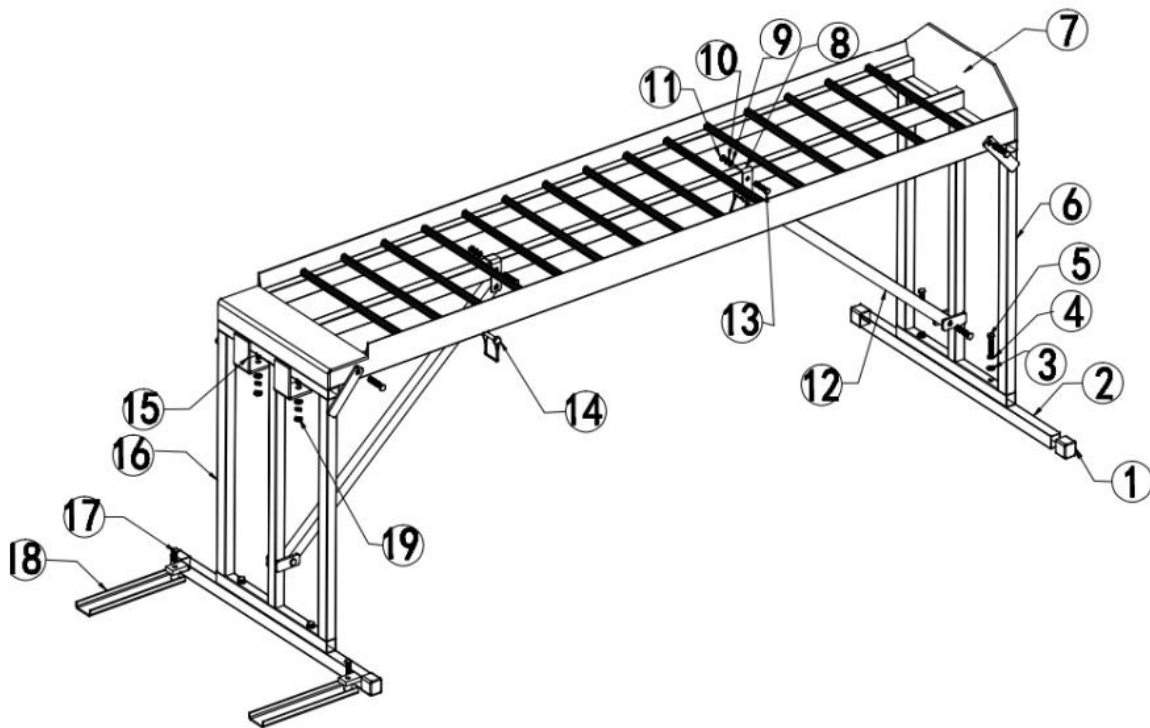


Read the Operator's Manual entirely. When you see this symbol, the subsequent instructions and warnings are serious follow without exception. Your life and the lives of others depend on it!

NOTE FROM TITAN

- It is the user's responsibility to read and follow all instructions.
- Always keep these instructions with the product and review before each use.
- It is the responsibility of this product's owner to furnish the instructions to any person that borrows or purchases the product.
- Inspect the product before use to ensure it is assembled properly and all parts are in safe working order and free of defects.
- Never modify this product in any way.
- All circumstances cannot be addressed in these instructions. Please use common sense and practice general safety measures when using this product.
- Parts and/or instructions are subject to change without notice

ATV STAND PARTS DIAGRAM / EXPLODED VIEW



| KEY | DESCRIPTION | QTY | KEY | DESCRIPTION | QTY |
|------|---------------------------------|-----|------|------------------------------|-----|
| (1) | END CAP | 2 | (11) | OUTER HEPTAGONAL NUT, M6 | 2 |
| (2) | HORIZONTAL PIPE OF UPRIGHT POST | 2 | (12) | OBLIQUE SUPPORT | 2 |
| (3) | FLAT GASKET, M8 | 12 | (13) | OUTER HEPTAGONAL BOLT, M6*40 | 2 |
| (4) | SPRING WASHER, M8 | 12 | (14) | U BOLT, M8*50 | 2 |
| (5) | OUTER HEPTAGONAL BOLT, M8*45 | 12 | (15) | ANTI-SKID FIXING BLOCK | 2 |
| (6) | REAR POST ASSEMBLY | 1 | (16) | REAR POST ASSEMBLY | 1 |
| (7) | STAND PLATFORM | 1 | (17) | OUTER HEPTAGONAL BOLT, M8*25 | 2 |
| (8) | OBLIQUE SUPPORT U-SHAPE HOLD | 2 | (18) | REINFORCING FIXING BLOCK | 2 |
| (9) | FLAT GASKET, M6 | 2 | (19) | OUTER HEPTAGONAL NUT, M8 | 8 |
| (10) | SPRING WASHER, M6 | 2 | | | |

ATV STAND SAFETY INFORMATION

The Maximum Weight Capacity for this product is 2000 LB. Do not exceed the weight capacity.

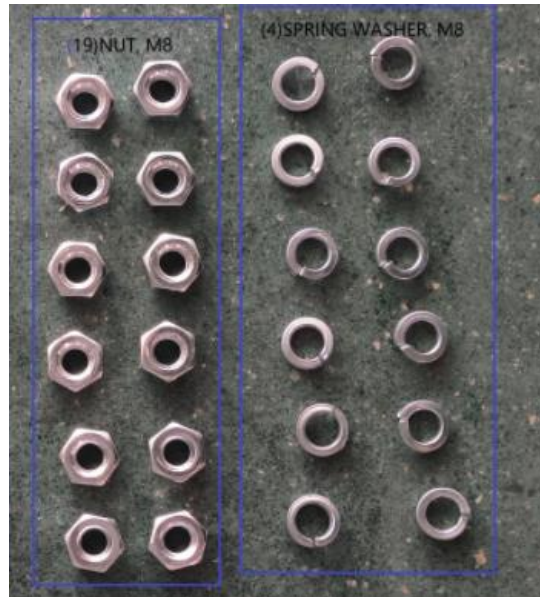
ATV STAND ASSEMBLY INSTRUCTIONS

STEP 1: Take all parts out of packing box.

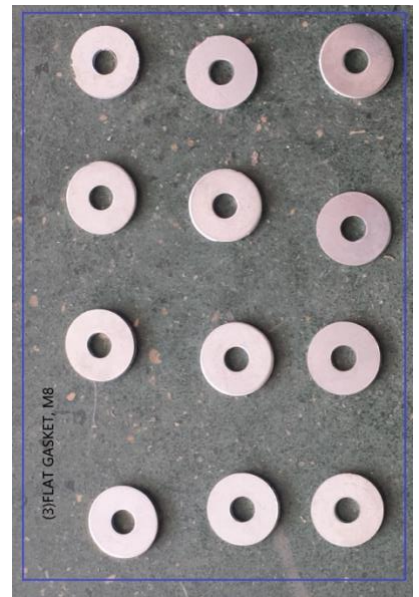
- (2) HORIZONTAL POPE UPRIGHT POSTS
- (12) OBLIQUE UPRIGHT
- (16) REAR POST ASSEMBLY



- (19) M8 NUT | (4) M8 SPRING WASHER



- (3) M8 FLAT GASKET



- (5) M8*45 BOLT | (13) M6*40 BOLT | (19) M8 NUT | (14) M8*50 U BOLT
- (8) SUPPORT U-SHAPE HOLD | (15) ANTI-SKID FIXING BLOCK



- (18) REINFORING FIXING PLATES



ATV STAND ASSEMBLY INSTRUCTIONS

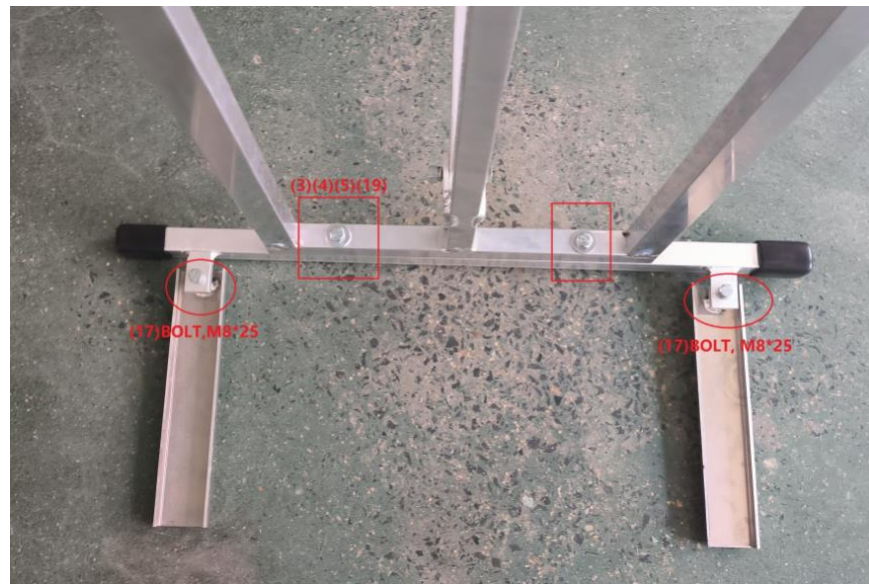
STEP 2: Place (2) on ground and screw (17) to fix (18)



STEP 3: Attach (16) with (2) using (19)(17)(3)(4)

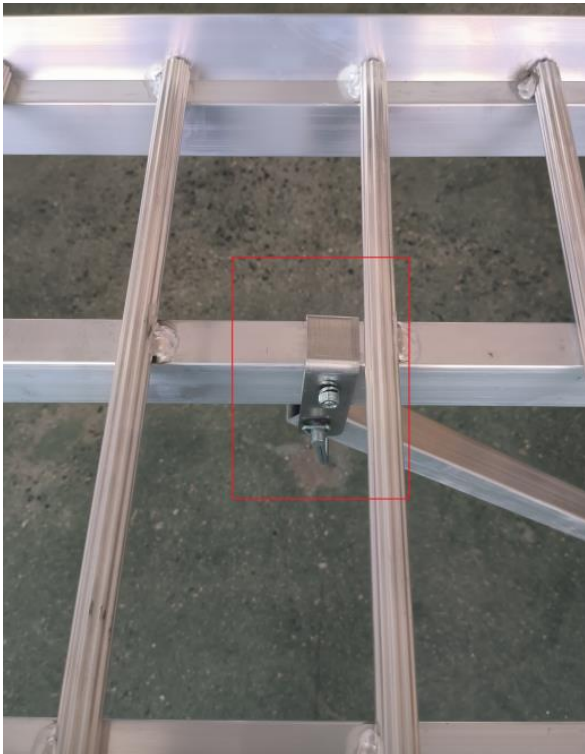
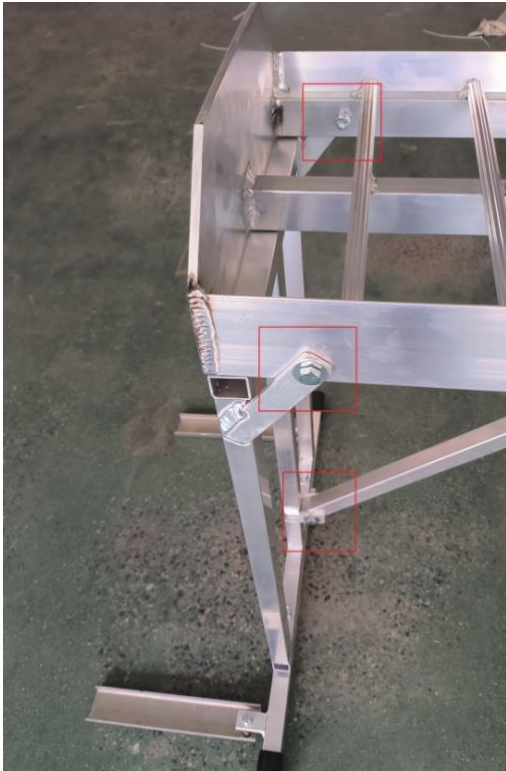


STEP 4: Fix (16) and (17) using (19)(17)(3)(4)

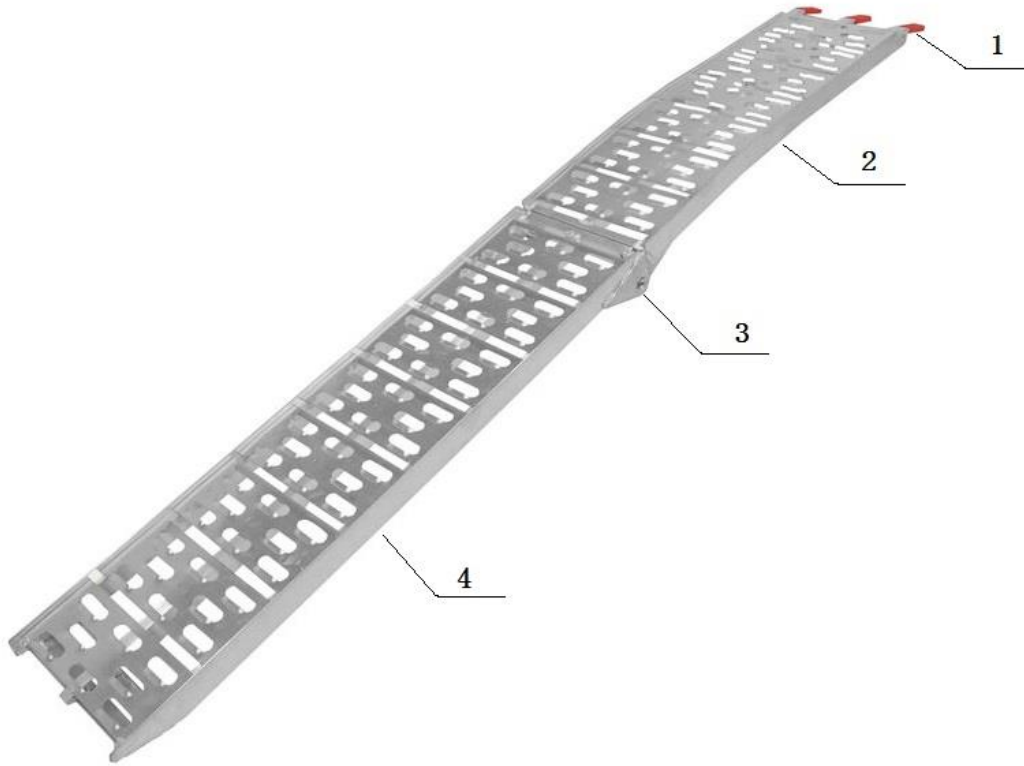


ATV STAND ASSEMBLY INSTRUCTIONS

STEP 5: Attach (12) to (17) by using (19)(17)(3)(4)(14)



ATV001 PARTS DIAGRAM / EXPLODED VIEW



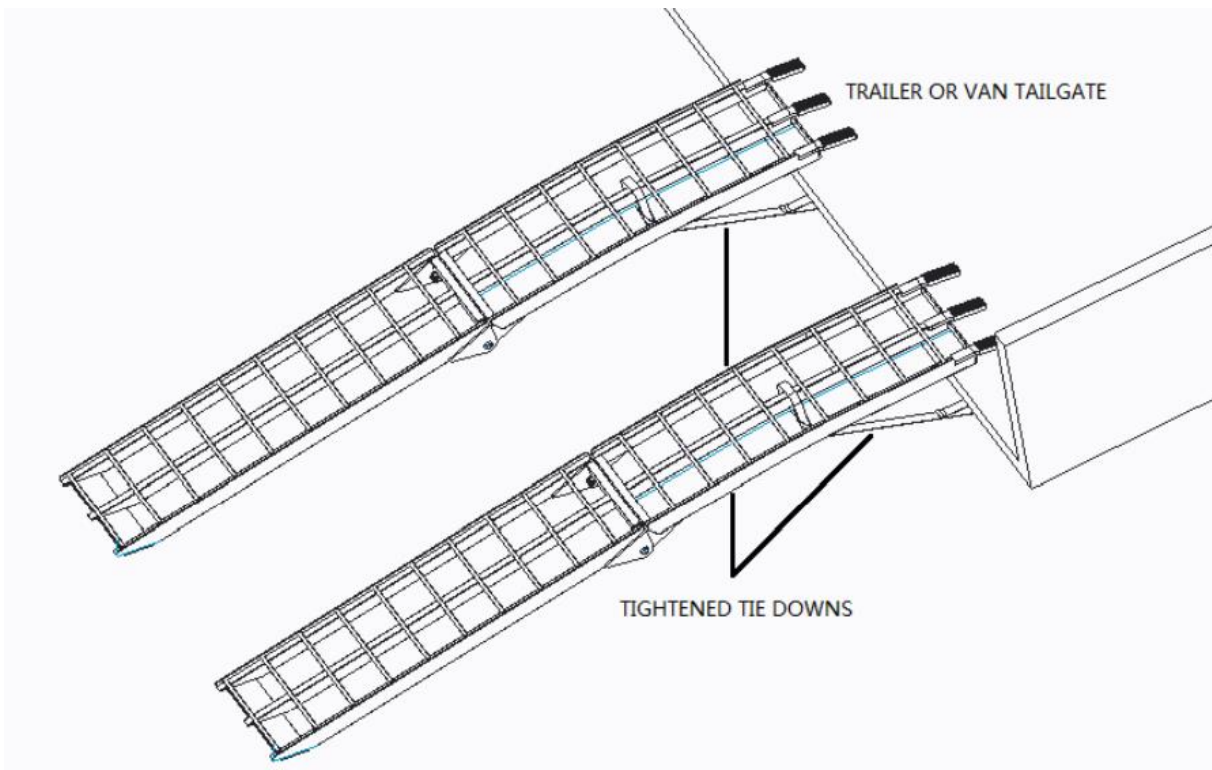
| KEY | BOX | DESCRIPTION | QTY |
|-----|-----|---------------------|-----|
| (1) | 1 | RUBBER FINGER COVER | 6 |
| (2) | 1 | RAMP SECTION A | 2 |
| (3) | 1 | BOLT AND NUT | 4 |
| (4) | 1 | RAMP SECTION B | 2 |
| (5) | 1 | STRAP | 2 |

ATV001 SAFETY INFORMATION

Maximum recommended loading height is 30" (21.6 degrees incline).
Do not exceed this loading height for safety purposes.
Do not exceed max Weight Capacity: 1500 LB.

NO ASSEMBLY IS NEEDED.

1. The bolt must be inserted and hand-tightened through the barrel hinge.
2. Park vehicle or trailer on flat, firm ground.
3. Place ramps on the tailgate or trailer to accommodate the wheelbase of the loading vehicle.
4. Ensure the plate or fingers of the ramp are securely in place.
5. Install and secure safety straps. An illustration of how to secure the safety straps is as follows:
6. Slowly ride machine up the ramps making sure tires are always centered on the ramp.



7. Acceleration must be slow, controlled, and constant. The operator must always remain in control of machinery during loading and unloading.
8. Use the brake as necessary to control your speed while unloading. Sudden or erratic braking or accelerating will cause ramps to pull away from the tailgate or trailer.

ACKNOWLEDGEMENT OF RISK AND RELEASE OF LIABILITY

The use of any equipment, including this one, involves the potential risk of injury. Apart from any warranty claim that might be presented for a claimed defect in material or workmanship of the product, you accept and assume full responsibility for any and all injuries, damages (both economic and non-economic), and losses of any type, which may occur, and you fully and forever release and discharge Titan, its insurers, employees, officers, directors, associates, and agents from any and all claims, demands, damages, rights of action, or causes of action, present or future, whether the same be known or unknown, anticipated, or unanticipated, resulting from or arising out of the use of said equipment.

This equipment must be used with care by capable and competent individuals under supervision, if necessary.

TITAN LIMITED WARRANTY: TERMS, EXCLUSIONS AND LIMITATIONS OF REMEDIES

This product comes with a one (1) year limited warranty that can be found at www.titanramps.com/warranty.html. Please review the same for all details regarding the Titan Limited Warranty.

THE TITAN LIMITED WARRANTY FOUND AT [WWW.TITANRAMPS.COM/WARRANTY.HTML](http://www.titanramps.com/warranty.html) IS EXCLUSIVE AND IS IN LIEU OF ALL OTHER WARRANTIES, EXPRESS OR IMPLIED, INCLUDING ANY IMPLIED WARRANTY OF MERCHANTABILITY AND/OR FITNESS FOR A PARTICULAR PURPOSE, EACH OF WHICH IS HEREBY DISCLAIMED.



NEED HELP? CONTACT US FIRST.

1-800-605-7555

info@titanramps.com

www.titanramps.com

© 2021 Titan Brands