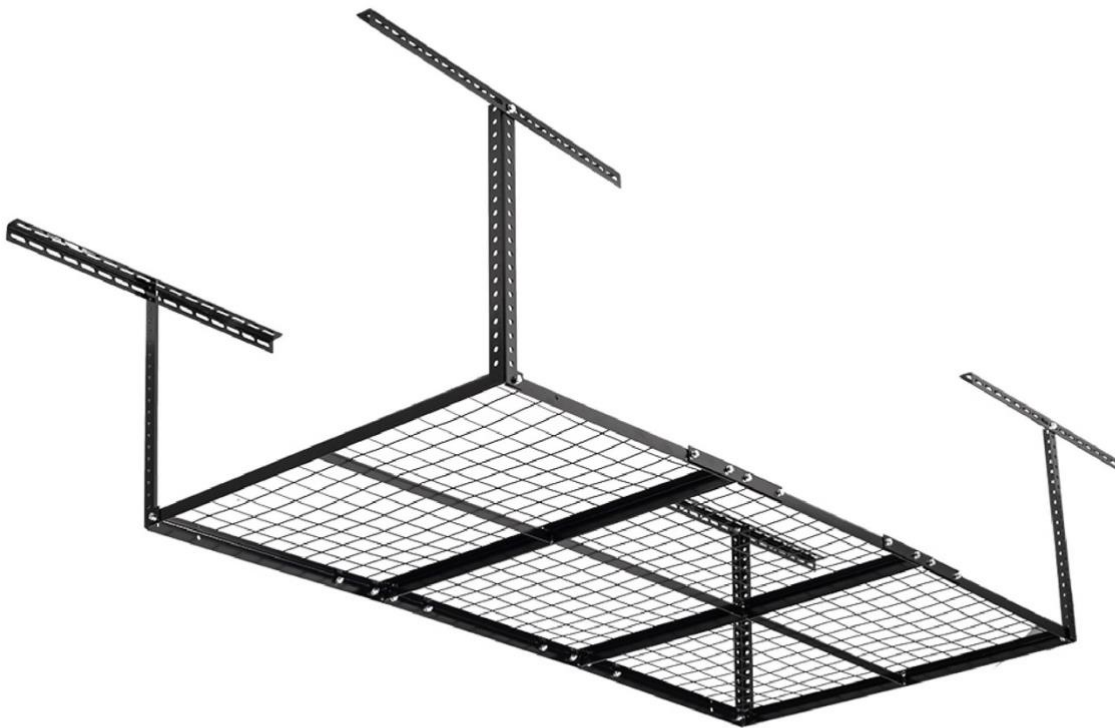


OVERHEAD STORAGE RACK

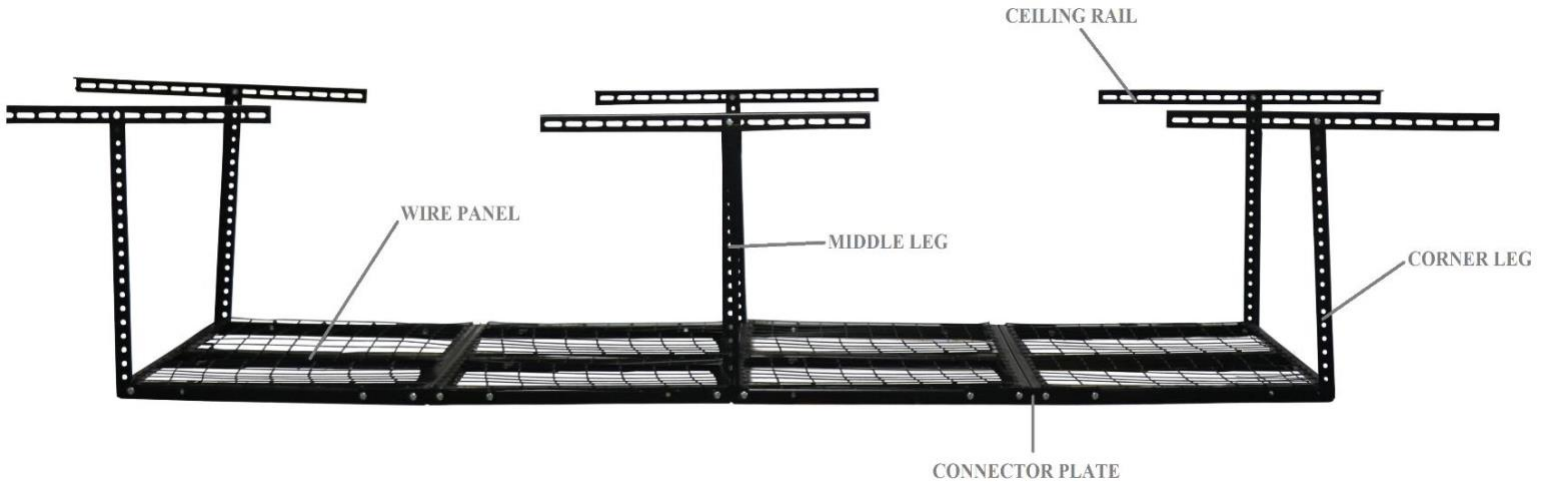
3X6OHSTG, 3X8OHSTG, 4X4OHSTG, 4X6OHSTG, 4X8OHSTG
840067, 840068, 840069, 840070, 840057



Operator's Manual

Read the Operator's Manual entirely. When you see this symbol, the subsequent instructions and warnings are serious follow without exception. Your life and the lives of others depend on it!

PARTS DIAGRAM / EXPLODED VIEW



DESCRIPTION	QUANTITY				
	3X6OHSTG	3X8OHSTG	4X4OHSTG	4X6OHSTG	4X8OHSTG
WIRE PANEL	x3	x4	x4	x3	x4
CONNECTOR PLATE	x4	x4	x4	x4	x4
MIDDLE LEG	N/A	x2	x2	N/A	x2
CORNER LEG	x4	x4	x4	x4	x4
CEILING RAIL	x4	x6	x6	x4	x6
CEILING BOLT M8-1.25x70MM	x8	x8	x8	x8	x12
REGULAR BOLT M8-1.25x19MM	x33	x38	x21	x28	x36
WASHER M8	x41	x46	x29	x36	x48
NUT M8	x41	x46	x29	x36	x48

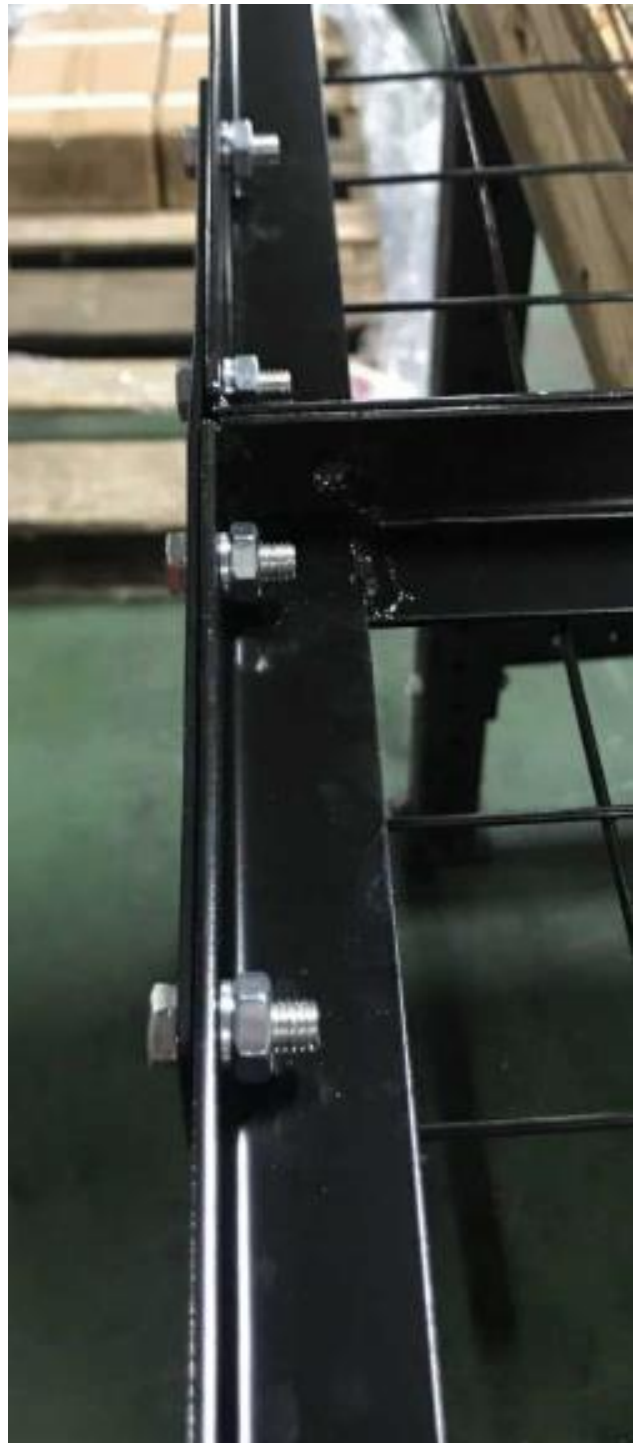
ASSEMBLY INSTRUCTIONS

STEP 1:

Align the sections, with the wire panels facing downward for easy assembly, to match the dimensions of the storage rack. In this case 4'x6'

STEP 2:

Locate the connector plate with 4 holes. Attach the connector plate where the two separate sections meet using the bolts provided. Bolt Orientation: bolt, connector, wire panel, lock washer, nut.



Note: This hole will not receive a bolt, lock washer, and nut combo. If the customer decides not to use the extensions, on the corner legs when hanging the rack, they can add a bolt to this location.



STEP 3:

Locate corner legs. Attach corner leg with one bolt, lock washer, and nut. NOTE: If the mesh wire is still facing downward, the corner legs should also face downward.



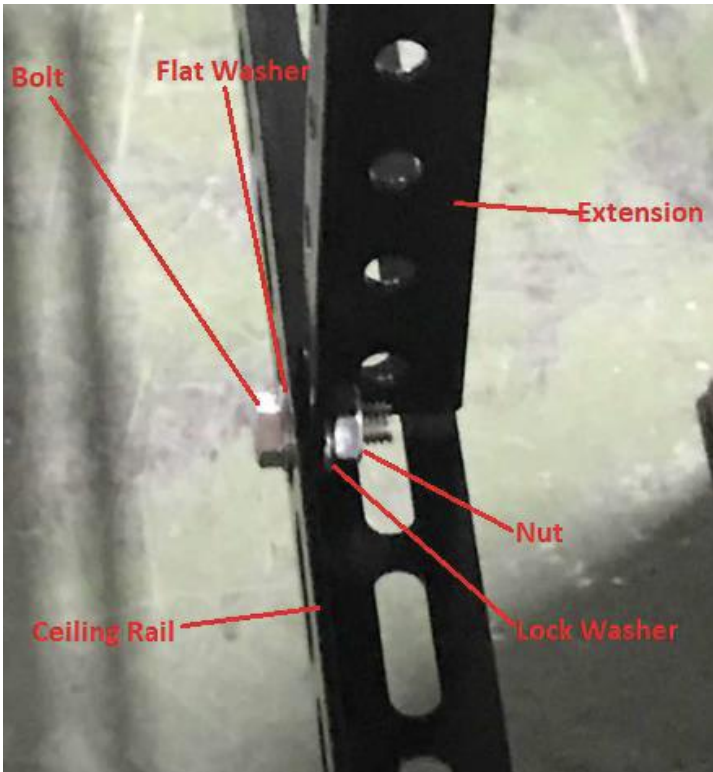
STEP 4:

(Optional) Once the corner uprights are connected, there is an option to add an extension, that is included, to each corner upright with the use of one bolt, lock washer, and nut per extension. We recommend putting the bolt in the middle hole from the overlap of the upright and extension. Example: If the corner leg and extension overlap 5 holes, put the bolt through the third hole for more stability.



STEP 5:

Locate the ceiling rail to the end of the extension with the flat side facing upward. This hardware assembly will include one bolt, flat washer, lock washer, and nut. Note: If the wire panel is still in the downward position, the flat side of the ceiling rail should face downward as well. When installing the hardware make sure that the flat washer is on the ceiling rail, as these holes are slotted for easy adjustment.



STEP 6:
Tighten all bolt combinations and they product is ready for hanging.



ACKNOWLEDGEMENT OF RISK AND RELEASE OF LIABILITY

The use of any equipment, including this one, involves the potential risk of injury. Apart from any warranty claim that might be presented for a claimed defect in material or workmanship of the product, you accept and assume full responsibility for any and all injuries, damages (both economic and non-economic), and losses of any type, which may occur, and you fully and forever release and discharge Titan, its insurers, employees, officers, directors, associates, and agents from any and all claims, demands, damages, rights of action, or causes of action, present or future, whether the same be known or unknown, anticipated, or unanticipated, resulting from or arising out of the use of said equipment.

This equipment must be used with care by capable and competent individuals under supervision, if necessary.

WARNING



Do not overfill! Mower should be level when checking oil in gear box.



some activities might be able to cause electric shock



Sharp objects may be involved.
Use protective cover during maintenance.

TITAN LIMITED WARRANTY: TERMS, EXCLUSIONS AND LIMITATIONS OF REMEDIES

This product comes with a one (1) year limited warranty that can be found at www.palletforks.com/warranty.html. Please review the same for all details regarding the Titan Limited Warranty.

THE TITAN LIMITED WARRANTY FOUND AT WWW.PALLETFORKS.COM/WARRANTY.HTML IS EXCLUSIVE AND IS IN LIEU OF ALL OTHER WARRANTIES, EXPRESS OR IMPLIED, INCLUDING ANY IMPLIED WARRANTY OF MERCHANTABILITY AND/OR FITNESS FOR A PARTICULAR PURPOSE, EACH OF WHICH IS HEREBY DISCLAIMED.



NEED HELP? CONTACT US FIRST.

1-800-605-7595

info@palletworks.com
www.palletforks.com

© 2021 Titan Brands