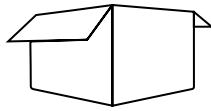




899482 - 21HELGB_AE, 899470 - 26HELGB_AE

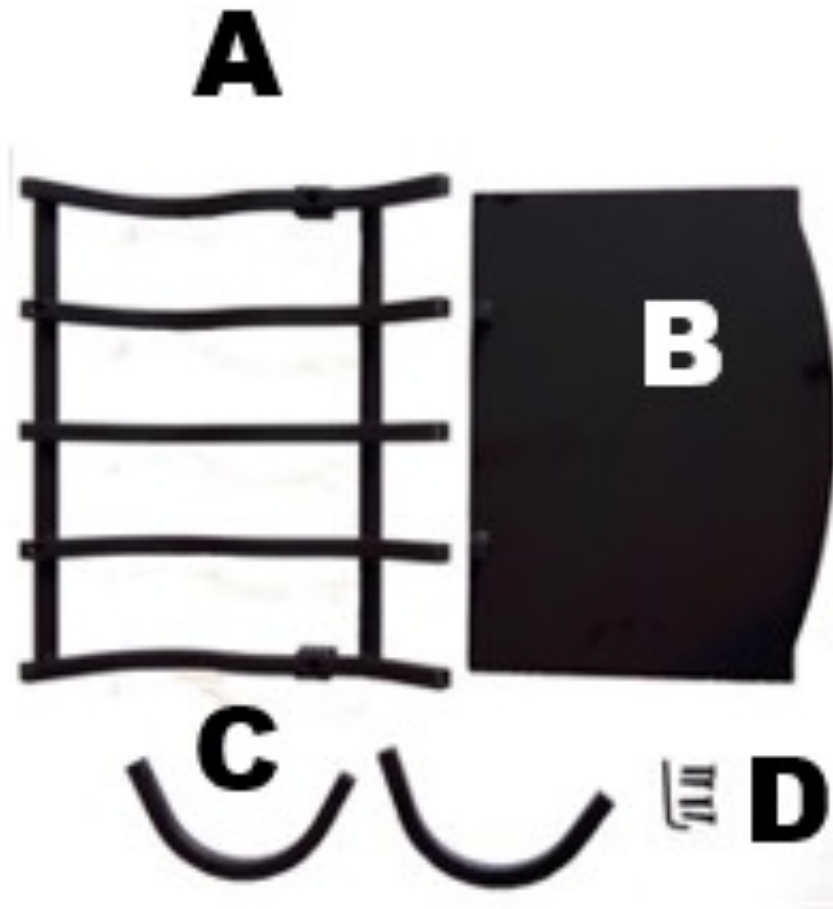
High-Efficiency Log Grate with Reflective Fireback





UNBOXING

1. LOG GRATE (1 PC)
2. BACK PLATE (1 PC)
3. LEGES (2 PC)
4. HARDWARE (1)



TAKING ALL PARTS OUT AND PLACE THEM ON FLAT GROUND CAREFULLY.

1. Place the log grate same as Figure 1 shown, take the supporting leg which has a hole into the socket, align holes of leg with holes of socket, insert screws through holes of leg with holes of socket, hand tighten screws only until all screws are in place.



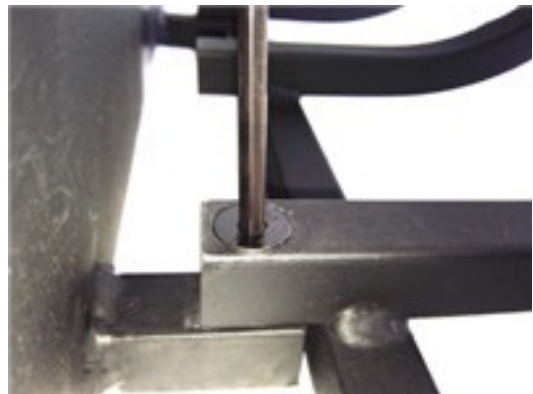
2. Same assembling method for the other leg. Notice: Hand tighten screws only, not fully tighten by wrench!



3. Put the back facing up carefully, connect it with the log grate at bottom, hole to hole alignment, then insert the screw into holes from upward side, hand tighten only. Same way for the other connection please.



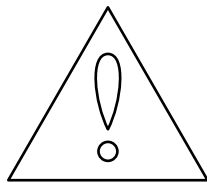
4. Tighten all the screws with Allen wrench.



5. Your Log Grate with Back is now ready for your fireplace use on a level non-combustible surface only.



-
- Do not use this unit on or near combustible surfaces or structures such as wood decks, dry leaves or grass, vinyl, or wood siding, etc.
 - Use on level, non-combustible surface only.
 - Keep away from all combustible materials including gasoline and other flammable liquids and vapors.
 - Never use flammable accelerants, such as: gasoline, alcohol, paint thinners, kerosene, etc. to start a fire. Serious injury or property damage could result.
 - Steel parts will become hot when in use! Failure to wear protective gloves when handling may lead to injury.
 - Always wear fire-resistant gloves when handling hot metal.
 - Keep out of reach of children.
 - Do not overfill or use to burn leaves or trash.
 - Exercise the same care you would with an open fire.
 - Never leave unit unattended while hot or in use.
 - Completely extinguish fire before leaving.
 - Ashes can remain hot for a long time after fire is extinguished.
 - Dispose of cold ashes properly.



WARNINGS



Heavy object. Use lifting aids and proper lifting techniques when moving.



Sharp objects may be involved. Use precaution and protection.



Choking hazard. Small parts - Please exercise caution if small children or pets are present.

Acknowledgement of Risk & Release of Liability

The use of any equipment, including this one, involves the potential risk of injury. Apart from any warranty claim that might be presented for a claimed defect in material or workmanship of the product, you accept and assume full responsibility for any and all injuries, damages (both economic and non-economic), and losses of any type, which may occur, and you fully and forever release and discharge Titan, its insurers, employees, officers, directors, associates, and agents from any and all claims, demands, damages, rights of action, or causes of action, present or future, whether the same be known or unknown, anticipated, or unanticipated, resulting from or arising out of the use of said equipment. This equipment must be used with care by capable and competent individuals under supervision, if necessary.

Time Limited Warranty: Terms, Exclusions & Limitations of Remedies

This product comes with a one (1) year limited warranty that can be found at www.ashandemberoutdoors.com/warranty.html. Please review the same for all details regarding the Titan Limited Warranty.

THE TITAN LIMITED WARRANTY FOUND AT WWW.TITANGREATOUTDOORS.COM/WARRANTY.HTML IS EXCLUSIVE AND IS IN LIEU OF ALL OTHER WARRANTIES, EXPRESS OR IMPLIED, INCLUDING ANY IMPLIED WARRANTY OF MERCHANTABILITY AND/OR FITNESS FOR A PARTICULAR PURPOSE, EACH OF WHICH IS HEREBY DISCLAIMED.

ASH & EMBER

Need help? Contact us first.

PHONE

1-888-794-1455

EMAIL

info@ashandemberoutdoors.com

ASH & EMBER

www.ashandemberoutdoors.com