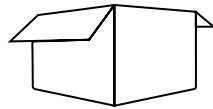




899463 - CFAGRL\_AE

# Adjustable Campfire Asado





## UNBOXING

1. BASE FRAME (1 PC)
2. COOKING GRIDDLE (1 PC)
3. MESH GRATE (1 PC)
4. SUPPORT BAR (2 PC)
5. ROTATED ROUND BAR WITH GEAR (1 PC)
6. HOOK (1 PC)
7. WHEEL WITH WOODEN HANDLEHANDLE (1 PC)
8. WIRE ROPE (1 PC)
9. FIXATION CLIP (2 PC)
10. BOLT M6X12 (3 PC)
11. SCREW M8X20 (4 PC)
12. SCREW M8X25 (8 PC)
13. SCREW M 6X40 (2 PC)
14. FLANGE (2 PC)
15. FIXATION RING (2 PC)



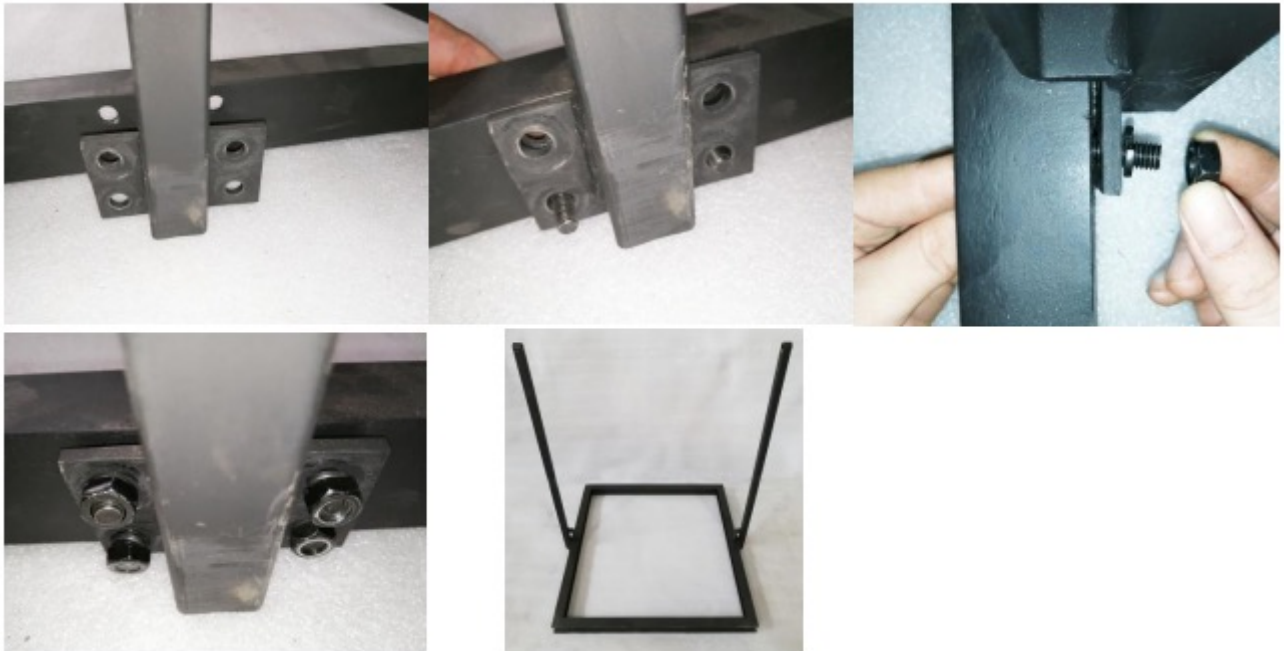
STEP 1

Place the base frame flat on the ground.



STEP 2

Assemble one supporting bar with base frame, shall be holes alignment. Insert bolt M8x25, place the washer and tighten the screws by hand only. The same way for the second supporting bar. Securely tighten with wrench.



### STEP 3

Put the cooking griddle over the bracket of supporting bar, use one fixation clip through the supporting bar, align holes of fixation clip with holes of cooking griddle. Insert bolt M8x20 and washer, attach with nuts. The same way for the other side. Hand tightens nuts only until all bolts are in place. THE SAME ASSEMBLY METHOD FOR MESH GRATE.



### STEP 4

Insert long bolt M6x40 through the hole of hook, place a washer. Then to assemble it with upper side hole of supporting bar, hand tighten the anti-loose nut.



### STEP 5

Insert rotated round bar with gear through the top hole of supporting bar. Put flange and fixation ring in turn through the rotated round bar. Align hole of flange with hole of rotated round bar near to the gear, insert short bolt M6x12, hand tighten only. Align holes of flange and tighten bolts.



### STEP 6

Put wheel through the rotated round bar at side of gear, align hole of wheel with hole of rotated round bar and insert long bolt M6x40. Securely tighten the anti-loose nut by wrench.



### STEP 7

Put rotated round bar through the hole of supporting bar at the other side, align holes of two fixation rings with rotated bar, insert short bolts M6x12 and hand tighten only.



### STEP 8

Insert bolt of one wire rope through the rotated bar, same way for another one.



### STEP 9

Take the ring of wire rope at another end hanging on hook of cooking griddle or mesh grate. Same way for another wire rope.



**STEP 10**

Tighten all screws which are needed to be tightened by the appropriate wrench.

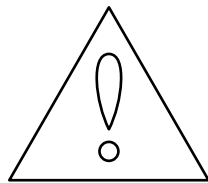


**STEP 11**

Your great Cooking Griddle is now ready for outside use on a level non-combustible surface.







## WARNINGS



Heavy object. Use lifting aids and proper lifting techniques when moving.



Sharp objects may be involved. Use precaution and protection.



Choking hazard. Small parts - Please exercise caution if small children or pets are present.

## **Acknowledgement of Risk & Release of Liability**

The use of any equipment, including this one, involves the potential risk of injury. Apart from any warranty claim that might be presented for a claimed defect in material or workmanship of the product, you accept and assume full responsibility for any and all injuries, damages (both economic and non-economic), and losses of any type, which may occur, and you fully and forever release and discharge Titan, its insurers, employees, officers, directors, associates, and agents from any and all claims, demands, damages, rights of action, or causes of action, present or future, whether the same be known or unknown, anticipated, or unanticipated, resulting from or arising out of the use of said equipment. This equipment must be used with care by capable and competent individuals under supervision, if necessary.

## **Time Limited Warranty: Terms, Exclusions & Limitations of Remedies**

This product comes with a one (1) year limited warranty that can be found at [www.ashandemberoutdoors.com/warranty.html](http://www.ashandemberoutdoors.com/warranty.html). Please review the same for all details regarding the Titan Limited Warranty.

THE TITAN LIMITED WARRANTY FOUND AT [WWW.TITANGREATOUTDOORS.COM/WARRANTY.HTML](http://WWW.TITANGREATOUTDOORS.COM/WARRANTY.HTML) IS EXCLUSIVE AND IS IN LIEU OF ALL OTHER WARRANTIES, EXPRESS OR IMPLIED, INCLUDING ANY IMPLIED WARRANTY OF MERCHANTABILITY AND/OR FITNESS FOR A PARTICULAR PURPOSE, EACH OF WHICH IS HEREBY DISCLAIMED.

# ASH & EMBER

---

Need help? Contact us first.

PHONE

1-888-794-1455

EMAIL

[info@ashandemberoutdoors.com](mailto:info@ashandemberoutdoors.com)

ASH & EMBER

[www.ashandemberoutdoors.com](http://www.ashandemberoutdoors.com)