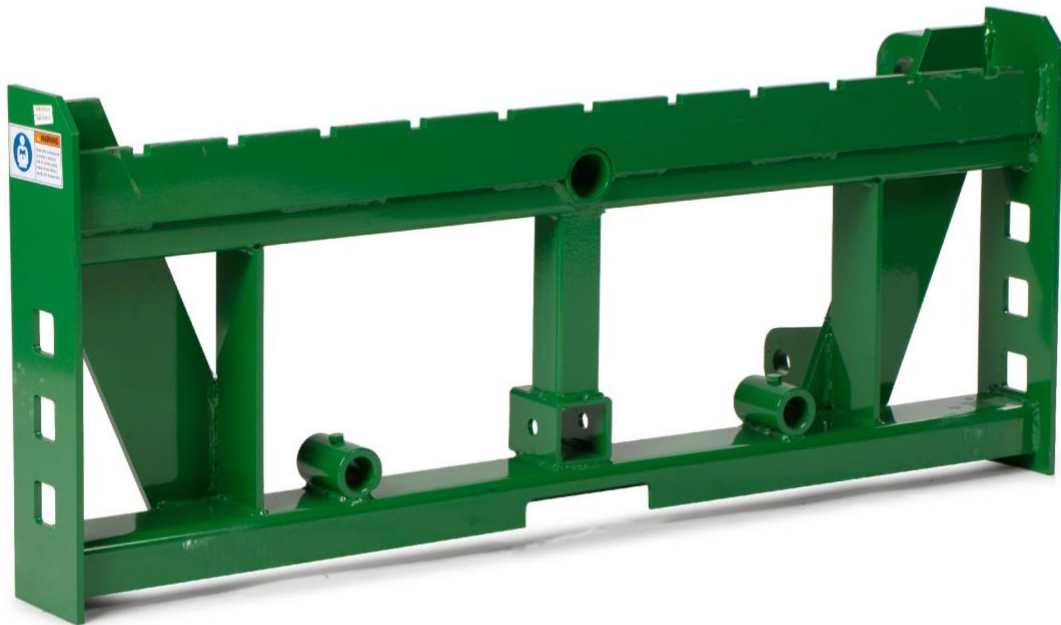


GLOBAL EURO PALLET FORK / HAY FRAME FITS JOHN DEERE TRACTORS

GJDFFRECON, GJDFFRECON-(2)FB36x125,
GJDFFRECON-(2)FB42x125, GJDFFRECON-(2)FB48x125,
GJDFFRECON-(2)FB60x125, GJDFFRECON-S32C2+(2)S17B,
GJDFFRECON-S39C2+(2)S17B, GJDFFRECON-S43C2+(2)S17B,
GJDFFRECON-S49C2+(2)S17B
132368, 132470, 132471, 132472, 132473, 132474, 132475, 132476, 132477



Operator's Manual

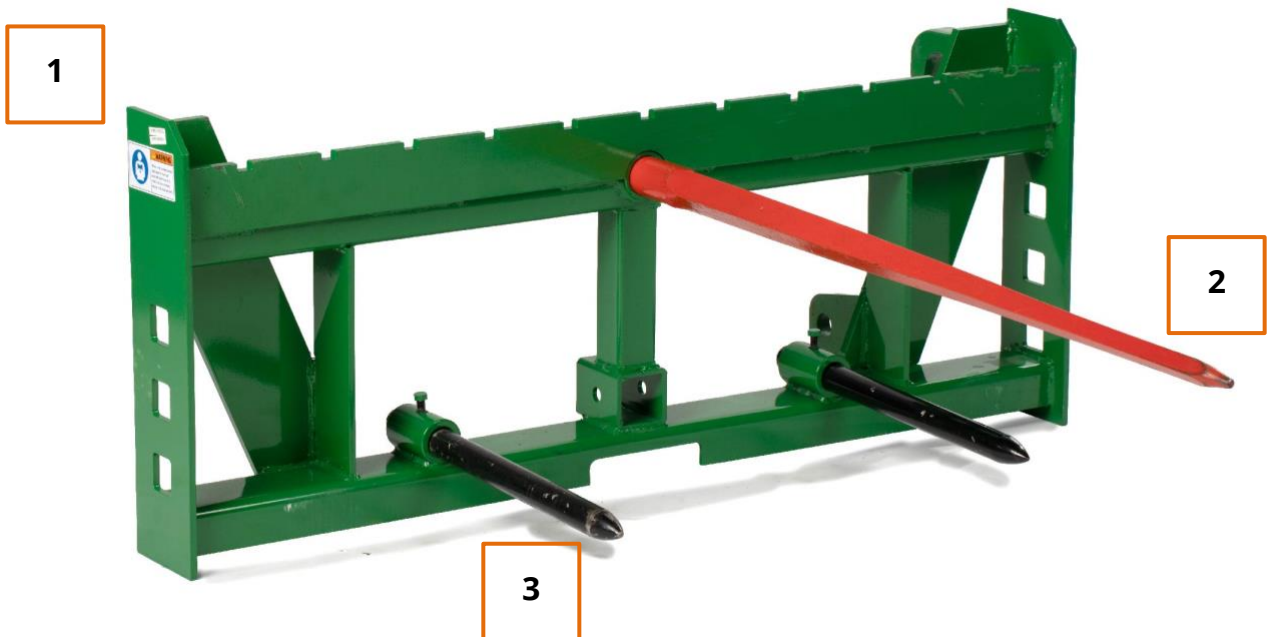
Read the Operator's Manual entirely. When you see this symbol, the subsequent instructions and warnings are serious follow without exception. Your life and the lives of others depend on it!

PALLET FORK FRAME PARTS DIAGRAM / EXPLODED VIEW



PALLET FORK BLADES ARE AVAILABLE IN 36", 42", 48" or 60"

HAY FRAME PARTS DIAGRAM / EXPLODED VIEW



MAIN HAY BALE SPEARS ARE AVAILABLE IN 32", 39", 43" or 49"

PALLET FORK FRAME PARTS DIAGRAM

KEY	DESCRIPTION	QTY
(1)	GLOBAL HAY FRAME	1
(2)	OPTIONAL PALLET FORK BLADES	2

HAY FRAME PARTS DIAGRAM

KEY	DESCRIPTION	QTY
(1)	GLOBAL HAY FRAME	1
(2)	OPTIONAL MAIN HAY BALE SPEAR	1
(3)	STABILIZER SPEARS	2

ASSEMBLY INSTRUCTIONS

- FRAME COMES FULLY ASSEMBLED
 - Fits John Deere Global Euro style mounting
 - Carriage Bars and Hay Spear Sleeves are already installed
 - Standard 2-inch trailer receiver hitch is welded to the frame
 - All in one frame design for moving pallets, large round hay bales, and trailers
 - Accepts Class 2 Pallet Fork Blades (sold separate)
 - Accepts one Conus 2 Hay Bale Spear (sold separate)
 - Accepts a pair of 17.5" Stabilizer Spears (sold separate)
 - Not compatible with the John Deere Hook and Pin or SSQA

ACKNOWLEDGEMENT OF RISK AND RELEASE OF LIABILITY

The use of any equipment, including this one, involves the potential risk of injury. Apart from any warranty claim that might be presented for a claimed defect in material or workmanship of the product, you accept and assume full responsibility for any and all injuries, damages (both economic and non-economic), and losses of any type, which may occur, and you fully and forever release and discharge Titan, its insurers, employees, officers, directors, associates, and agents from any and all claims, demands, damages, rights of action, or causes of action, present or future, whether the same be known or unknown, anticipated, or unanticipated, resulting from or arising out of the use of said equipment.

This equipment must be used with care by capable and competent individuals under supervision, if necessary.

WARNING



Do not overfill! Mower should be level when checking oil in gear box.



some activities might be able to cause electric shock



Sharp objects may be involved.
Use protective cover during maintenance.

TITAN LIMITED WARRANTY: TERMS, EXCLUSIONS AND LIMITATIONS OF REMEDIES

This product comes with a one (1) year limited warranty that can be found at www.palletforks.com/warranty.html. Please review the same for all details regarding the Titan Limited Warranty.

THE TITAN LIMITED WARRANTY FOUND AT WWW.PALLETFORKS.COM/WARRANTY.HTML IS EXCLUSIVE AND IS IN LIEU OF ALL OTHER WARRANTIES, EXPRESS OR IMPLIED, INCLUDING ANY IMPLIED WARRANTY OF MERCHANTABILITY AND/OR FITNESS FOR A PARTICULAR PURPOSE, EACH OF WHICH IS HEREBY DISCLAIMED.



NEED HELP? CONTACT US FIRST.

1-800-605-7595

info@palletworks.com
www.palletforks.com

© 2023 Titan Brands