

HYDRAULIC REAR BLADE

84REARBLADEv2, 93REARBLADEv2, 84REARBLADE-HTREARBLADE
96REARBLADE-HTREARBLADE
191649, 191565, 191650, 191628

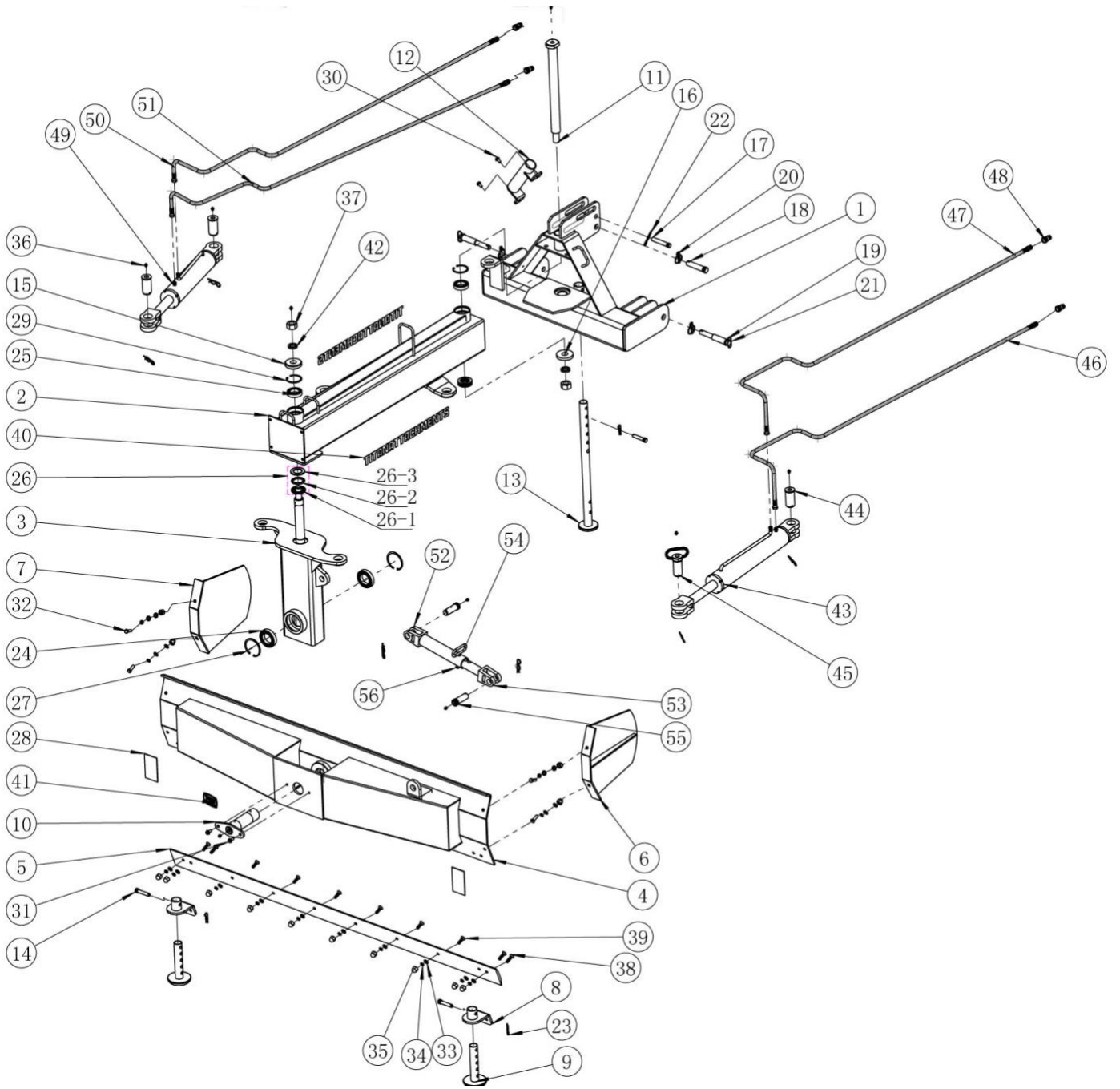


Operator's Manual



Read the Operator's Manual entirely. When you see this symbol, the subsequent instructions and warnings are serious follow without exception. Your life and the lives of others depend on it!

PARTS DIAGRAM / EXPLODED VIEW



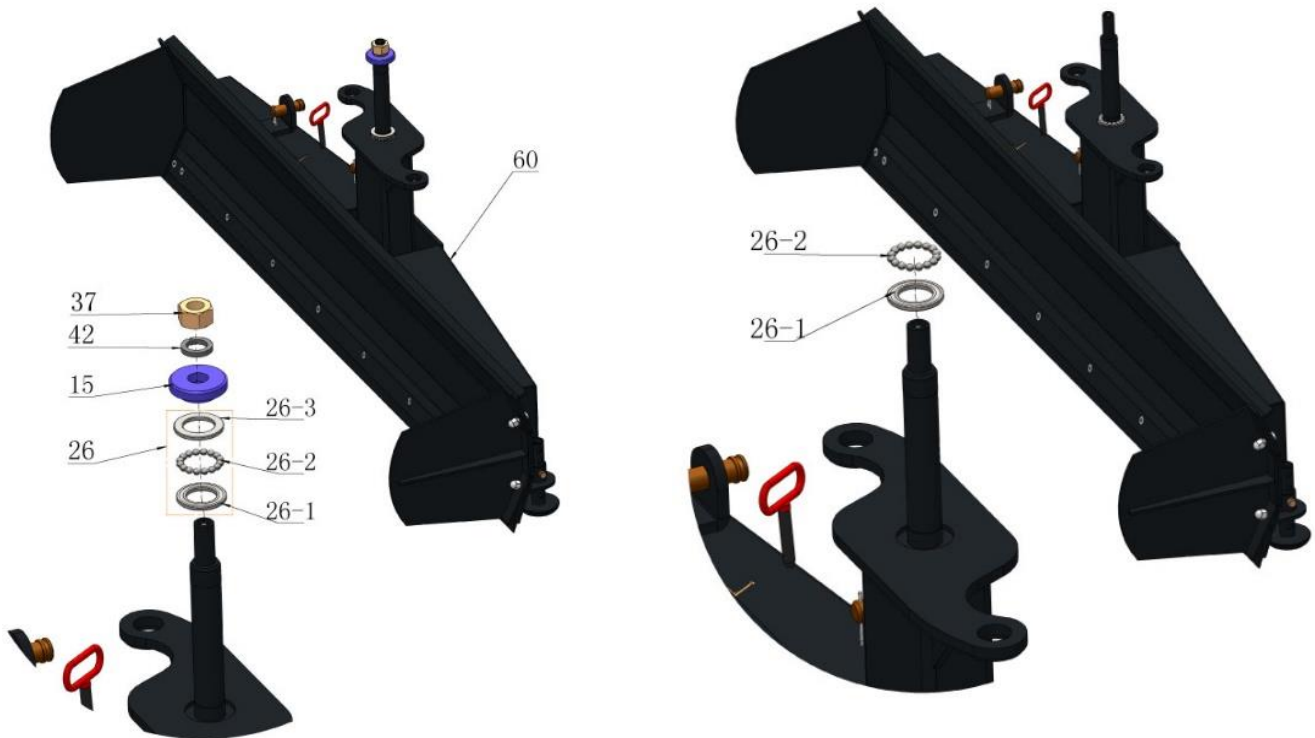
AVAILABLE IN 84" OR 93" BLADES

KEY	DESCRIPTION	QTY
(1)	PIONEER COUPLER - MALE	4
(2)	BLADE SWING CYLINDER RETURN HOSE	1
(3)	BLADE SWING CYLINDER FEED HOSE	1
(4)	HEX BOLT M30	2
(5)	SPRING WASHER M30	2
(6)	FLAT WASHER M30	3
(7)	PIN SHAFT SPACER-1 (YYTDQ-15)	1
(8)	PIN SHAFT-1 (XTREE06)	3
(9)	COTTER PIN 4x70	7
(10)	GREASE ZERK M10x1	9
(11)	PIN SHAFT-2 (WITH HANDLE RING)	1
(12)	BLADE SWING HYDRAULIC CYLINDER	1
(13)	CIRCLIP-1 (75)	2
(14)	BALL BEARING 6009	2
(15)	BOOM ASSY	1
(16)	BEARING 51209	2
(17)	BLADE SWING PUSH FRAME	1
(18)	PIN SHAFT-2 (φ16Xx80x6)	1
(19)	COTTER PIN 4x45	1
(20)	MANUAL TILT CYLINDER SLEEVE	1
(21)	MANUAL TILT CYLINDER ROD	1
(22)	PIN SHAFT-3	2
(23)	BLADE END MUD FENDER-RIGHT	1
(24)	COUNTERSUNK HEX BOLT M12x40	6
(25)	COUNTERSUNK HEX BOLT M12x45	4
(26)	CUTTING EDGE ASSY	1
(26-1)	BEARING LOWER COVER	1
(26-2)	BEARING	1
(26-3)	BEARING LOWER COVER	1
(27)	REAR BLADE ASSY	1
(28)	PIN SHAFT-4	3

(29)	SKID SHOE MOUNTING BRACKET	2
(30)	FLAT WASHER M12	18
(31)	SPRING WASHER M12	14
(32)	HEX CAP NUT M12	14
(33)	SKID SHOE	2
(34)	HEX FLANGE BOLT M12x25	2
(35)	KING PIN	1
(36)	TITAN LOGO-1	1
(37)	HEX BOLT M12x35	4
(38)	COTTER PIN 4x50	3
(39)	REFLECTOR	2
(40)	BLADE END MUD FENDER-LEFT	1
(41)	CIRCLIP-2 (95)	2
(42)	BALL BEARING 6012	2
(43)	BOOM OFFSET HYDRAULIC CYLINDER	1
(44)	BOOM OFFSET CYLINDER FEED HOSE	1
(45)	BOOM OFFSET CYLINDER RETURN HOSE	1
(46)	TITAN LOGO STICKER	2
(47)	LEG STAND	1
(48)	PIN SHAFT SPACER-2 (YYTDQ-16)	1
(49)	3PT LOWR LINK CAT1/2 STEP PIN	2
(50)	LOCK PIN (ϕ 9.5)	3
(51)	HEX FLANGE BOLT M10x20	2
(52)	TOOL HOLDER	1
(53)	3PT LINK MOUNT FRAME	1
(54)	PIN SHAFT-4 (BOOM PIVOT)	1
(55)	3PT TOP LINK CAT1 PIN	1
(56)	3PT TOP LINK CAT2 PIN	1

ASSEMBLY INSTRUCTIONS FOR 84REARBLADEv2 AND 93REARBLADE

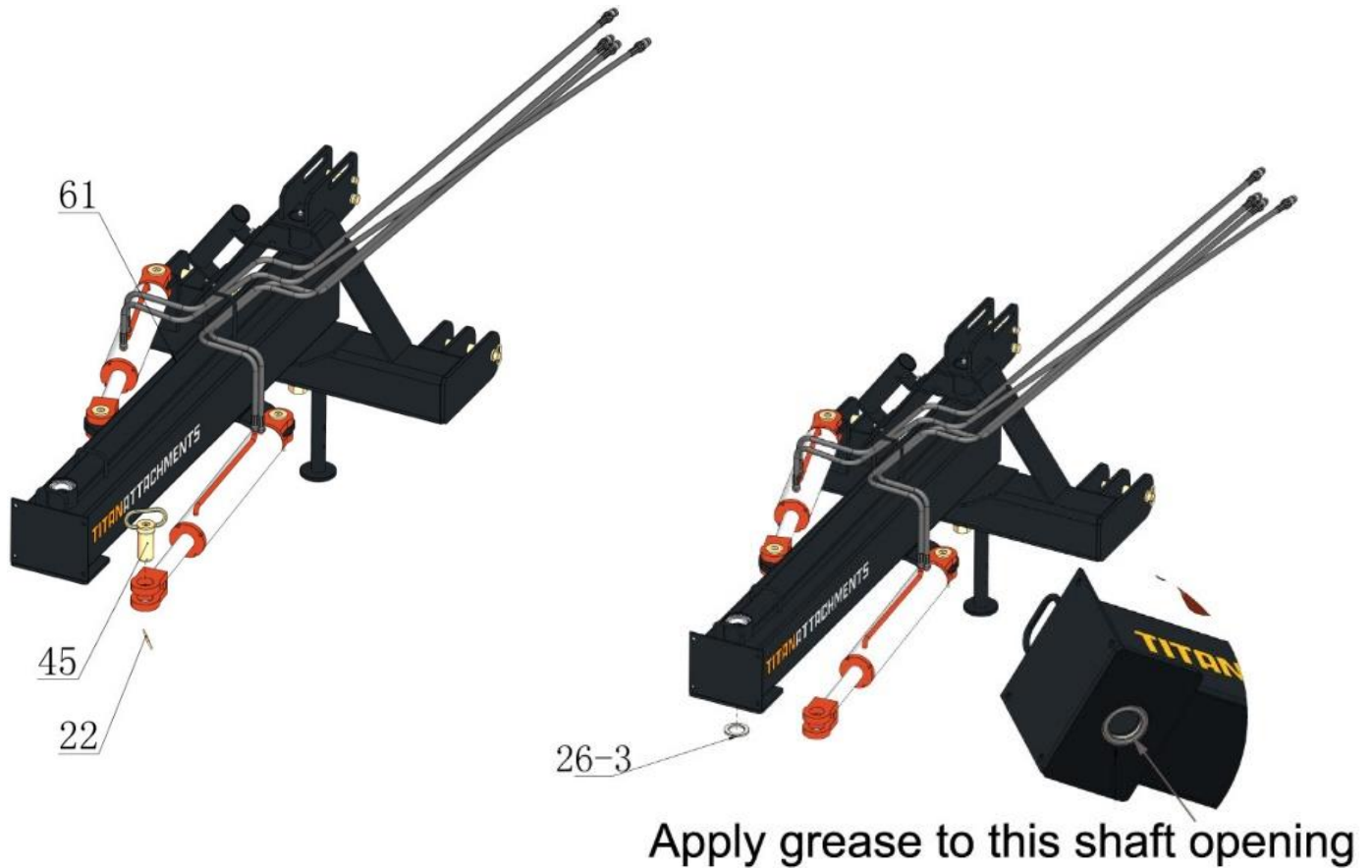
STEP 1



PART#	DESCRIPTIONS
15	FLAT SHIM WASHER
26-1	BEARING LOWER COVER
26-2	BEARING
26-3	BEARING UPPER COVER
37	HEX NUT
42	SPRING WASHER
60	REAR BLADE ASSY

- Take off Hex Nut (37), Spring Washer (42), Flat Shim Washer (15), Bearing Lower Cover (26-1), Bearing (26-2) and Bearing Upper Cover (26-3) from the shaft of Rear Blade Assy (60).
- Apply solid bearing grease to Bearing (26-2) and Bearing Lower Cover (26-1) to lubricate.
- Insert Bearing Lower Cover (26-1) and Bearing (26-2) back to the shaft.
- Keep Hex Nut (37), Spring Washer (42), Flat Shim Washer (15) and Bearing Upper Cover (26-3) For use in the next step.

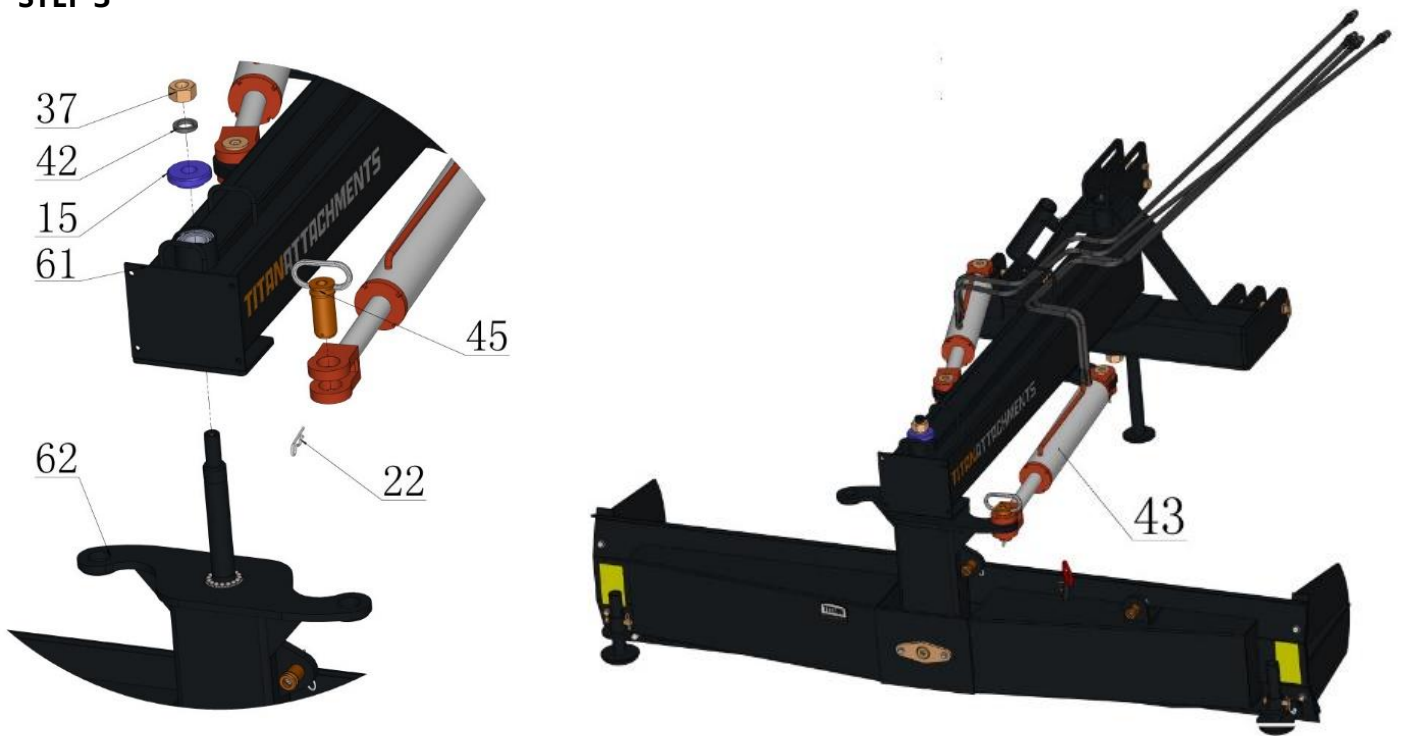
STEP 2



PART#	DESCRIPTIONS
22	COTTER PIN
26-3	BEARING UPPER COVER
45	CYLINDER PIN
61	BOOM ASSY

- Take off Cylinder Pin (45) and Cotter Pin (22) from the cylinder attaching to the Boom (61). Keep these parts for use in the next step.
- Apply solid bearing grease to the bottom shaft opening of the Boom (61) and put Bearing Upper Cover (26-3) into the opening. The grease applied will help to stick the Bearing Upper Cover (26-3) on the opening.

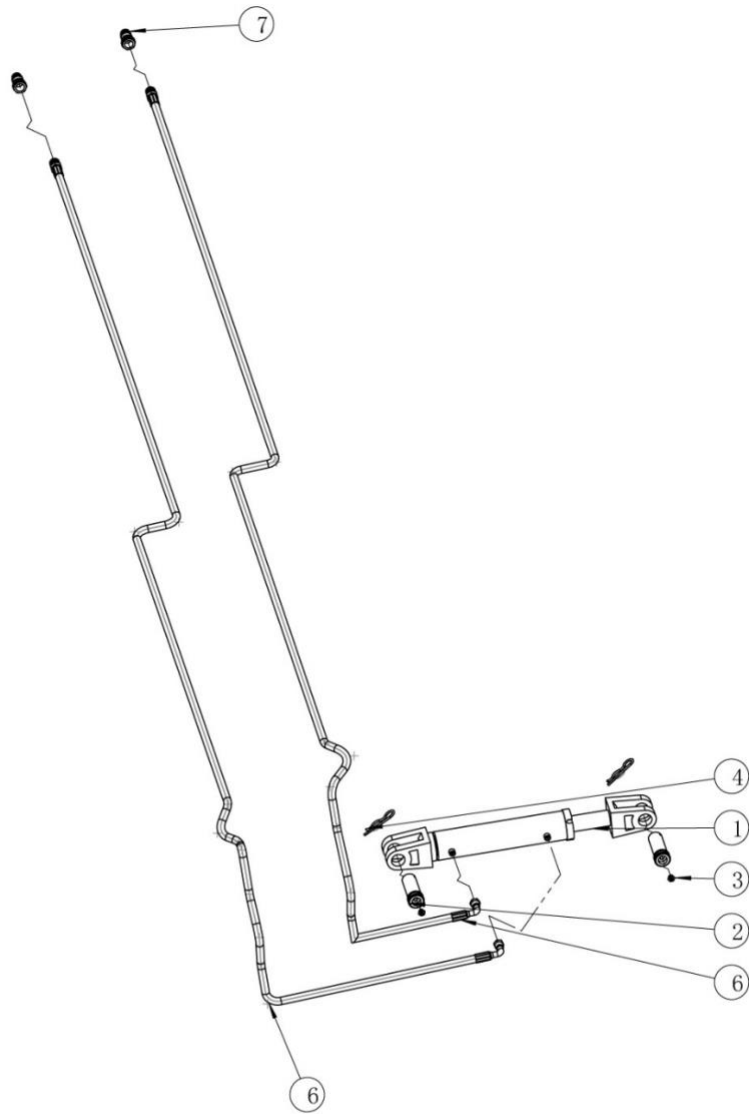
STEP 3



PART#	DESCRIPTIONS	PART#	DESCRIPTIONS
15	FLAT SHIM WASHER	43	CYLINDER
22	COTTER PIN	45	CYLINDER PIN
37	HEX NUT	61	BOOM ASSY
42	SPRING WASHER	62	BLADE PUSHER ASSY

- Attach 3-point link of the Boom Assy (61) to tractor and move to the Rear Blade Assy (60) that is sitting upright in the steel crate.
- Align the shaft openings at the front of the Boom Assy (61) with the shaft of the Blade Pusher Assy (62).
- Lower the Boom Assy (61) to insert the shaft of the Blade Pusher Assy (62) through the openings.
- Put Flat Shim Washer (15), Spring Washer (42) and Hex Nut (37) on the top threaded part of the shaft and tighten.
- Attach the Cylinder (43) to the Blade Pusher Assy (62) bracket using Cylinder Pin (45) and Cotter Pin (22).
- Installation is completed.

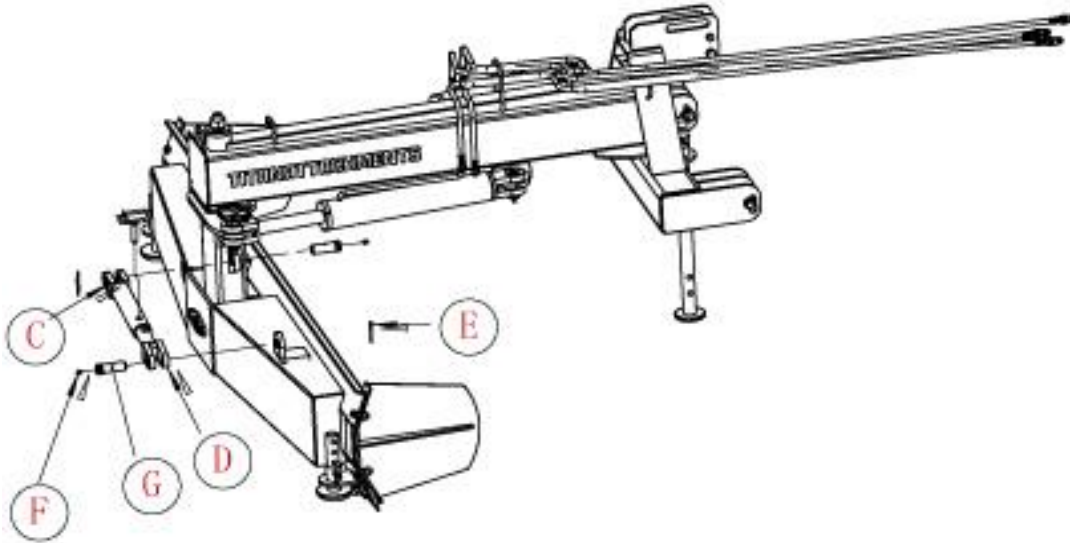
HYDRAULIC TILT PARTS DIAGRAM / EXPLODED VIEW



KEY	DESCRIPTION	QTY
(1)	HYDRAULIC TILT CYLINDER	1
(2)	CYLINDER PIN	2
(3)	GREASE ZERK	2
(4)	COTTER PIN	2
(5)	OIL HOSE - FEED	1
(6)	OIL HOSE - RETURN	1
(7)	PIONEER COUPLER	2

ASSEMBLY INSTRUCTIONS

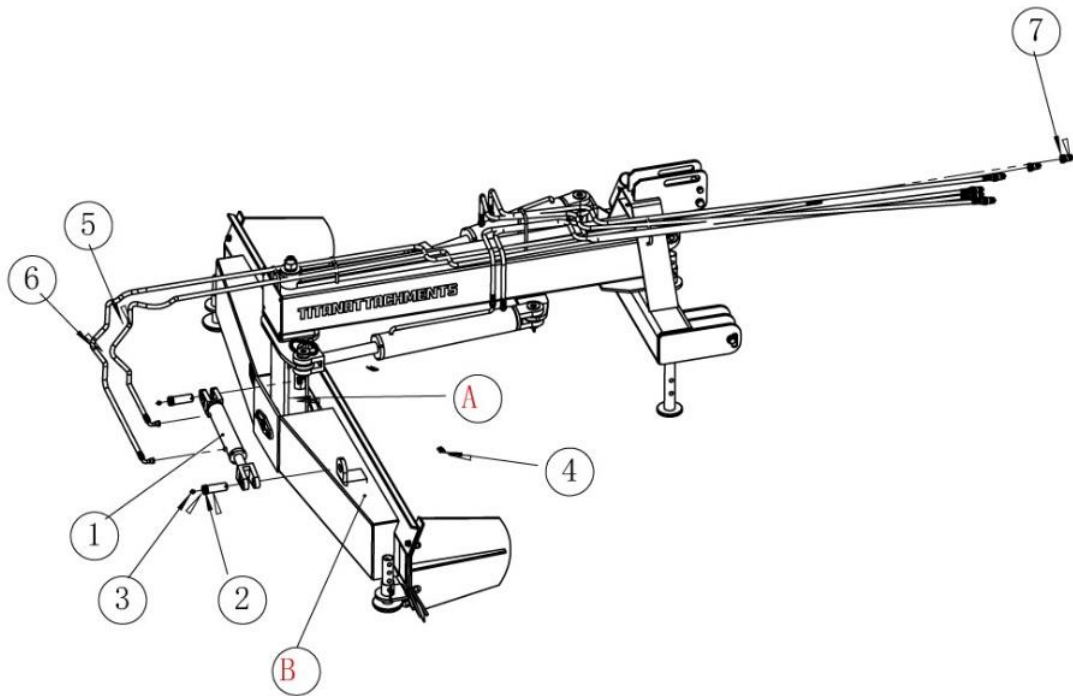
STEP 1 - REMOVE MANUAL TILT CYLINDER



A	BLADE SWING FRAME
B	REAR BLADE ASSY
C	MANUAL TILT CYLINDER SLEEVE
D	MANUAL TILT CYLINDER ROD
E	COTTER PIN
F	GREASE ZERK
G	CYLINDER PIN

- Your REAR BLADE unit (84REARBLADE or 96REARBLADE) is equipped with a **MANUAL TILT CYLINDER (C) (D)**. Remove the MANUAL TILT CYLINDER by taking off **COTTER PIN (E)**, **GREASE ZERK (F)** and **CYLINDER PIN (G)**.

STEP 2 – REPLACE WITH HYDRAULIC TILT CYLINDER



- Align pin holes of **HYDRAULIC TILT CYLINDER (1)** with mounting bracket at **BLADE SWING FRAME (A)**.
- Insert **CYLINDER PIN (2)** through these holes, mount on **COTTER PIN (4)** and fasten-on **GREASE ZERK (3)**.
- Repeat the same step for the other end of the cylinder on the mounting bracket at **REAR BLADE ASSY (B)**.
- Fasten on **OIL HOSE - FEED (5)** and **OIL HOSE - RETURN (6)** to the cylinder, and then mount on **PIONEER COUPLER (7)** to **OIL HOSE - FEED (5)** and **OIL HOSE - RETURN (6)** respectively.

ACKNOWLEDGEMENT OF RISK AND RELEASE OF LIABILITY

The use of any equipment, including this one, involves the potential risk of injury. Apart from any warranty claim that might be presented for a claimed defect in material or workmanship of the product, you accept and assume full responsibility for any and all injuries, damages (both economic and non-economic), and losses of any type, which may occur, and you fully and forever release and discharge Titan, its insurers, employees, officers, directors, associates, and agents from any and all claims, demands, damages, rights of action, or causes of action, present or future, whether the same be known or unknown, anticipated, or unanticipated, resulting from or arising out of the use of said equipment.

This equipment must be used with care by capable and competent individuals under supervision, if necessary.

TITAN LIMITED WARRANTY: TERMS, EXCLUSIONS AND LIMITATIONS OF REMEDIES

This product comes with a one (1) year limited warranty that can be found at www.palletforks.com/warranty.html. Please review the same for all details regarding the Titan Limited Warranty.

THE TITAN LIMITED WARRANTY FOUND AT WWW.PALLETFORKS.COM/WARRANTY.HTML IS EXCLUSIVE AND IS IN LIEU OF ALL OTHER WARRANTIES, EXPRESS OR IMPLIED, INCLUDING ANY IMPLIED WARRANTY OF MERCHANTABILITY AND/OR FITNESS FOR A PARTICULAR PURPOSE, EACH OF WHICH IS HEREBY DISCLAIMED.



NEED HELP? CONTACT US FIRST.

1-800-605-7595

info@palletworks.com

www.palletforks.com

© 2023 Titan Brands