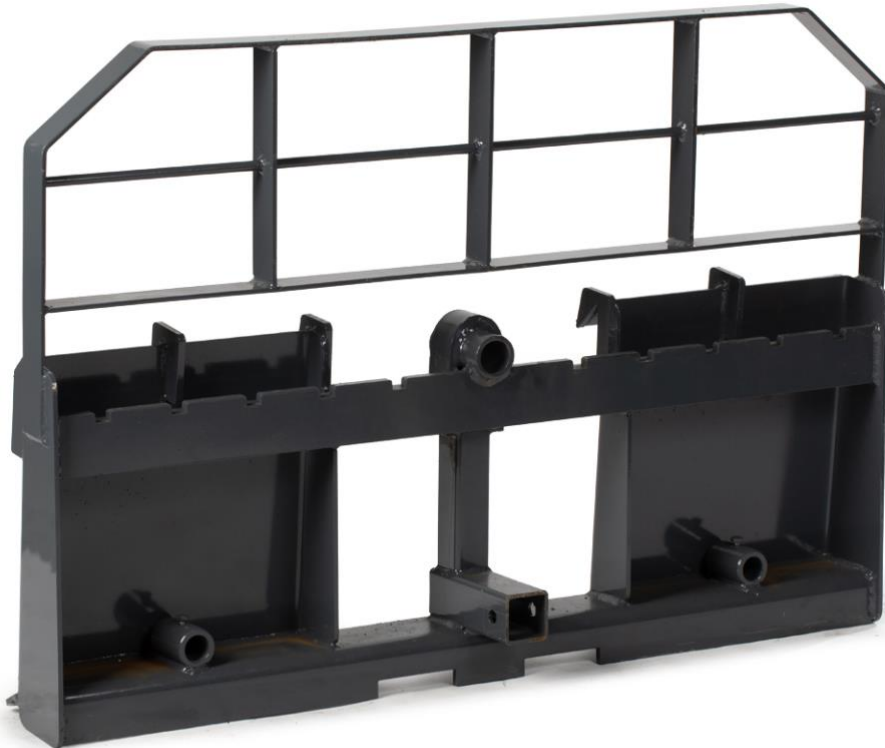


# PRO SERIES USA MADE PALLET FORK / HAY FRAME ATTACHMENT

---

**UAFFRPRO, UAFFRPRO-(2)FB36x125, UAFFRPRO-(2)FB42x125,  
UAFFRPRO-(2)FB48x125, UAFFRPRO-(2)FB60x125,  
UAFFRPRO-S32C2+(2)S17B, UAFFRPRO-S39C2+(2)S17B,  
UAFFRPRO-S43C2+(2)S17B, UAFFRPRO-S49C2+(2)S17B  
132466, 132487, 132488, 132489, 132490, 132491, 134292, 134293, 134294**



## Operator's Manual

Read the Operator's Manual entirely. When you see this symbol, the subsequent instructions and warnings are serious follow without exception. Your life and the lives of others depend on it!

## PALLET FORK FRAME PARTS DIAGRAM / EXPLODED VIEW

---



Pallet fork blades are available in your choice of 36", 42", 48", or 60"

KEY	DESCRIPTION	QTY
1	PALLET FORK FRAME	1
2	OPTIONAL PALLET FORK BLADES	2

### ASSEMBLY INSTRUCTIONS

---

- Comes fully assembled.
  - Proudly made in the USA!
  - Universal Skid Steer Quick Tach Mounting System
  - Safely move hay bales with the added stability of a headache rack
  - Carriage Bars and Hay Spear Sleeves are already installed
  - Standard 2-inch trailer receiver hitch is welded to the frame
  - All in one frame design for moving pallets, large round hay bales, and trailers
  - Accepts Class II Pallet Fork Blades (sold separate)
  - Accepts one Conus 2 Hay Bale Spear (sold separate)
  - Accepts a Pair of 17.5" Stabilizer Spears (sold separate)

## HAY FRAME PARTS DIAGRAM / EXPLODED VIEW

---



Hay bale spears are available in your choice of 32", 39", 43", or 49"

KEY	DESCRIPTION	QTY
1	HAY FRAME	1
2	OPTIONAL HAY BALE SPEAR	1
3	STABILIZER SPEARS	2

### ASSEMBLY INSTRUCTIONS

---

- Comes fully assembled.
  - Proudly made in the USA!
  - Universal Skid Steer Quick Tach Mounting System
  - Safely move hay bales with the added stability of a headache rack
  - Carriage Bars and Hay Spear Sleeves are already installed
  - Standard 2-inch trailer receiver hitch is welded to the frame
  - All in one frame design for moving pallets, large round hay bales, and trailers
  - Accepts Class II Pallet Fork Blades (sold separate)
  - Includes one Conus 2 Hay Bale Spear
  - Includes a Pair of 17.5" Stabilizer Spears

## ACKNOWLEDGEMENT OF RISK AND RELEASE OF LIABILITY

---

The use of any equipment, including this one, involves the potential risk of injury. Apart from any warranty claim that might be presented for a claimed defect in material or workmanship of the product, you accept and assume full responsibility for any and all injuries, damages (both economic and non-economic), and losses of any type, which may occur, and you fully and forever release and discharge Titan, its insurers, employees, officers, directors, associates, and agents from any and all claims, demands, damages, rights of action, or causes of action, present or future, whether the same be known or unknown, anticipated, or unanticipated, resulting from or arising out of the use of said equipment.

This equipment must be used with care by capable and competent individuals under supervision, if necessary.

## WARNING

---



**Do not overfill!** Mower should be level when checking oil in gear box.



some activities might be able to cause electric shock



Sharp objects may be involved.  
Use protective cover during maintenance.

## TITAN LIMITED WARRANTY: TERMS, EXCLUSIONS AND LIMITATIONS OF REMEDIES

---

This product comes with a one (1) year limited warranty that can be found at [www.palletforks.com/warranty.html](http://www.palletforks.com/warranty.html). Please review the same for all details regarding the Titan Limited Warranty.

**THE TITAN LIMITED WARRANTY FOUND AT [WWW.PALLETFORKS.COM/WARRANTY.HTML](http://WWW.PALLETFORKS.COM/WARRANTY.HTML) IS EXCLUSIVE AND IS IN LIEU OF ALL OTHER WARRANTIES, EXPRESS OR IMPLIED, INCLUDING ANY IMPLIED WARRANTY OF MERCHANTABILITY AND/OR FITNESS FOR A PARTICULAR PURPOSE, EACH OF WHICH IS HEREBY DISCLAIMED.**



**NEED HELP? CONTACT US FIRST.**

**1-800-605-7595**

[info@palletworks.com](mailto:info@palletworks.com)  
[www.palletforks.com](http://www.palletforks.com)

© 2023 Titan Brands