

T-3 SERIES FOLDING POWER RACK

T3FLDUP82-T3FLDSB21, T3FLDUP91-T3FLDSB21,
T3FLDUP82-T3FLDSB41 - T3FLDUP91-T3FLDSB41
401226, 401227, 401228, 401229

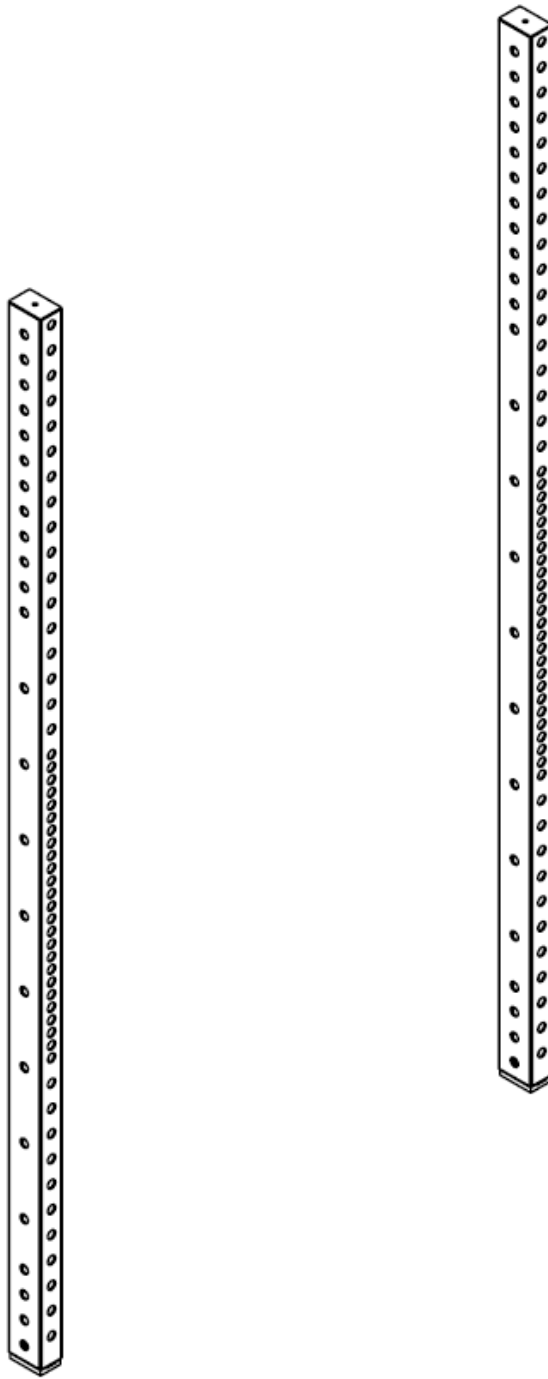


Operator's Manual



Read the Operator's Manual entirely. When you see this symbol, the subsequent instructions and warnings are serious follow without exception. Your life and the lives of others depend on it!

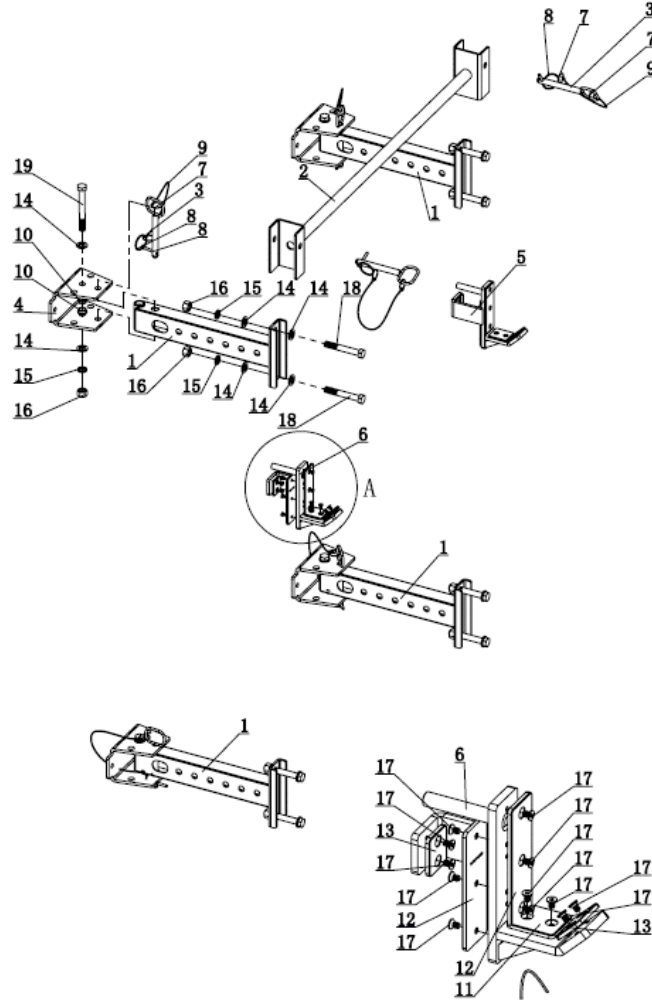
FULL ASSEMBLY/EXPLODED VIEW



AVAILABLE IN 82" OR 91" UPRIGHTS

| KEY | BOX | DESCRIPTION | QTY |
|-----|-----|------------------------------|-----|
| (1) | 1 | 82" T3 FOLDING UPRIGHT FRAME | 2 |
| (1) | 1 | 91" T3 FOLDING UPRIGHT FRAME | 2 |

FULL PARTS LIST – SHOWN WITH THE 21" DEPTH SIDE BRACINGS



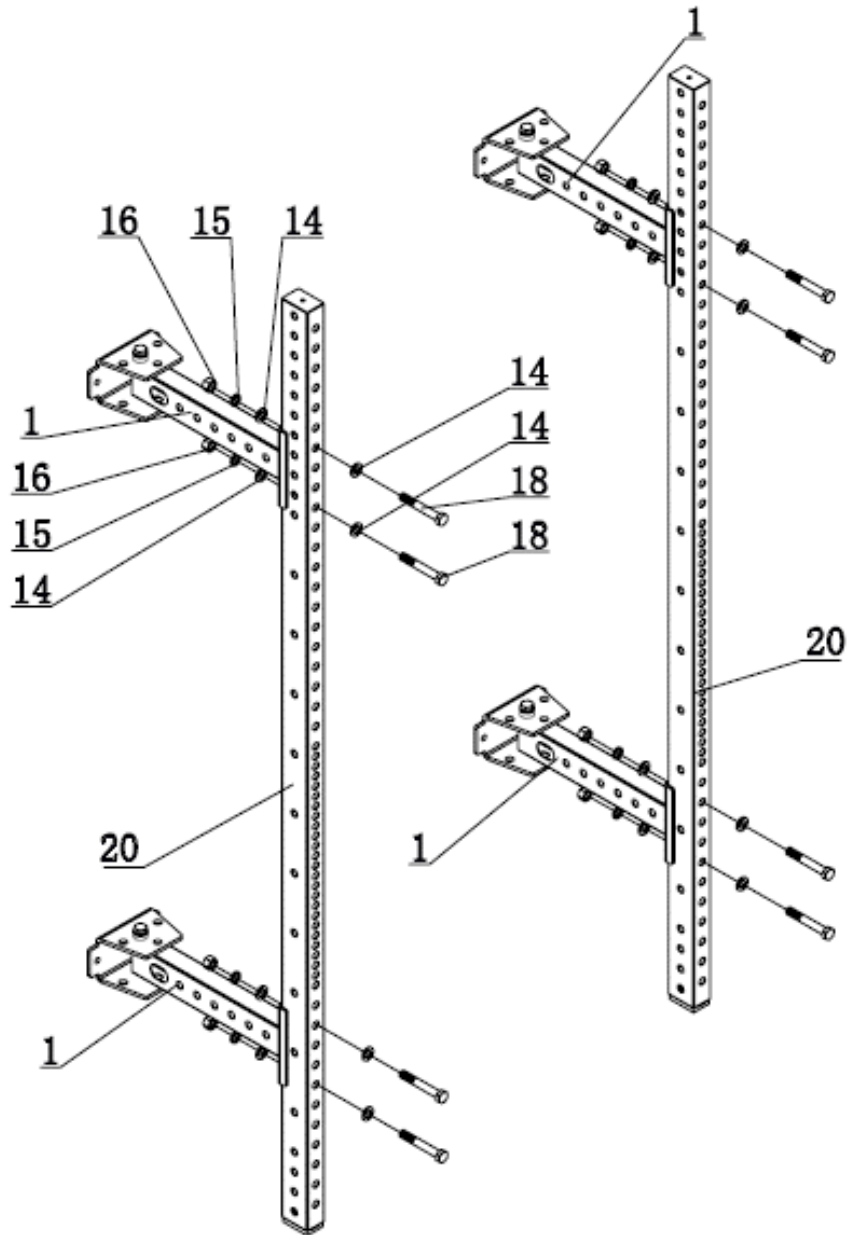
AVAILABLE IN 21" OR 41" SIDE BRACINGS (See 41" below)

| KEY | BOX | DESCRIPTION | QTY | KEY | BOX | DESCRIPTION | QTY |
|------|-----|---|-----|------|-----|-------------------------|-----|
| (1) | 1 | REAR CONNECTING | 4 | (11) | 1 | SHORT PLASTIC PLATE | 2 |
| (2) | 1 | PULL UP BAR | 1 | (12) | 1 | LONG PLASTIC PLATE | 4 |
| (3) | 1 | PIN | 6 | (13) | 1 | FRONT PLASTIC PLATE | 4 |
| (4) | 1 | RETAINING BRACKET | 4 | (14) | 1 | FLAT WASHER | 24 |
| (5) | 1 | J-HOOK(L) | 1 | (15) | 1 | SPRING WASHER $\Phi 16$ | 12 |
| (6) | 1 | J-HOOK(R) | 1 | (16) | 1 | NUT M16 | 12 |
| (7) | 1 | PULL RING $\Phi 1.5 \times 31$ | 12 | (17) | 1 | COUNTERSUNK HEAD | 24 |
| (8) | 1 | SMALL PIN $\Phi 6 \times 45$ | 6 | (18) | 1 | HEX BOLT M16*110 | 8 |
| (9) | 1 | CABLE $\Phi 5.5 \times \Phi 1.6 \times 330$ | 6 | (19) | 1 | HEX BOLT M16*135 | 4 |
| (10) | 1 | $\Phi 16$ BUSHING | 8 | | | | |

ASSEMBLY INSTRUCTIONS – SHOWN WITH THE 21" DEPTH SIDE BRACINGS

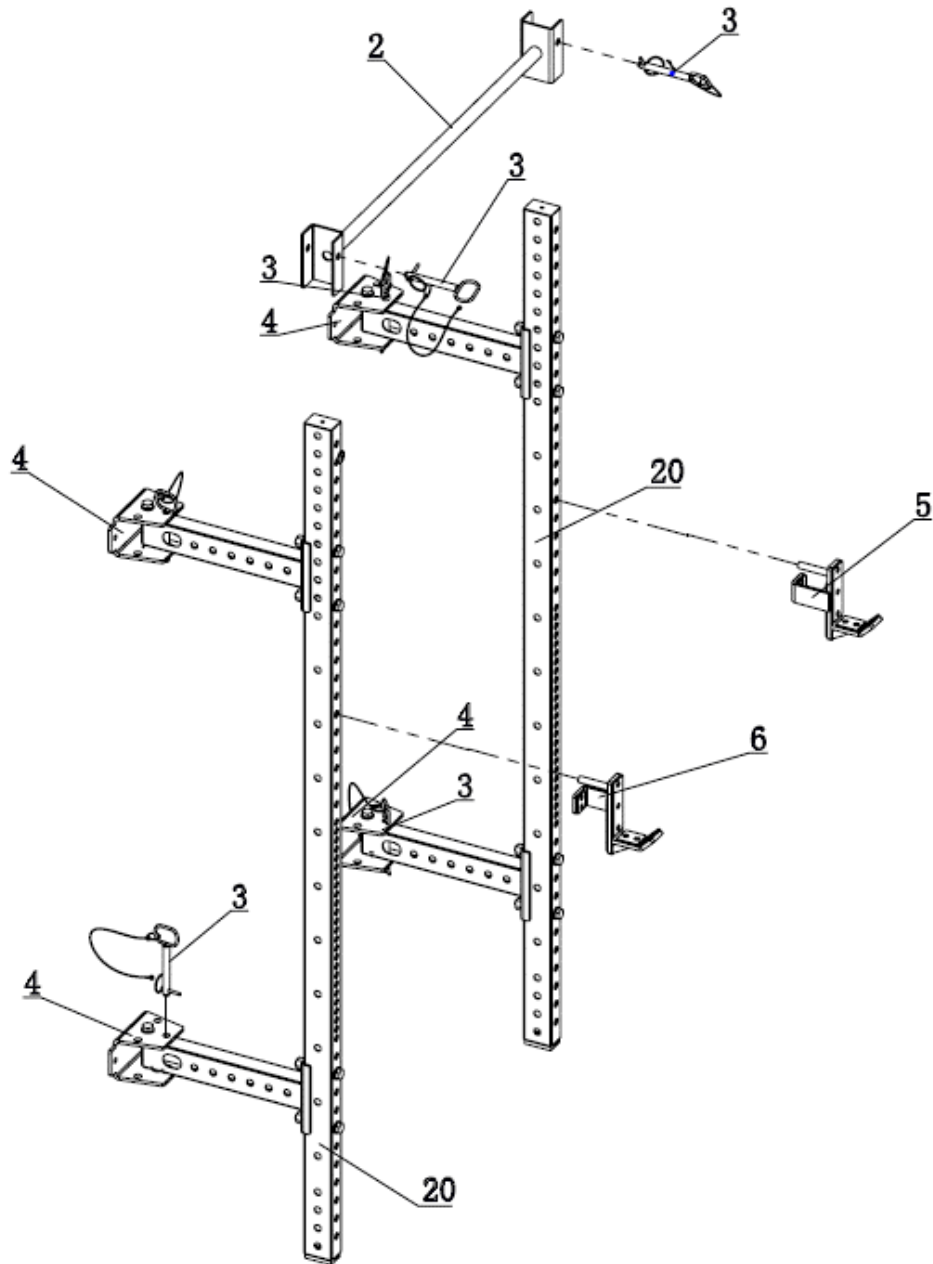
STEP 1

Connect the Rear Connecting Frame (1) and Upright Frame (20), using Flat Washer $\Phi 17 \times \Phi 30 \times 3$ (14), Spring Washer $\Phi 16$ (15), M16 Nut (16) and Hex Bolt M16*110(18).



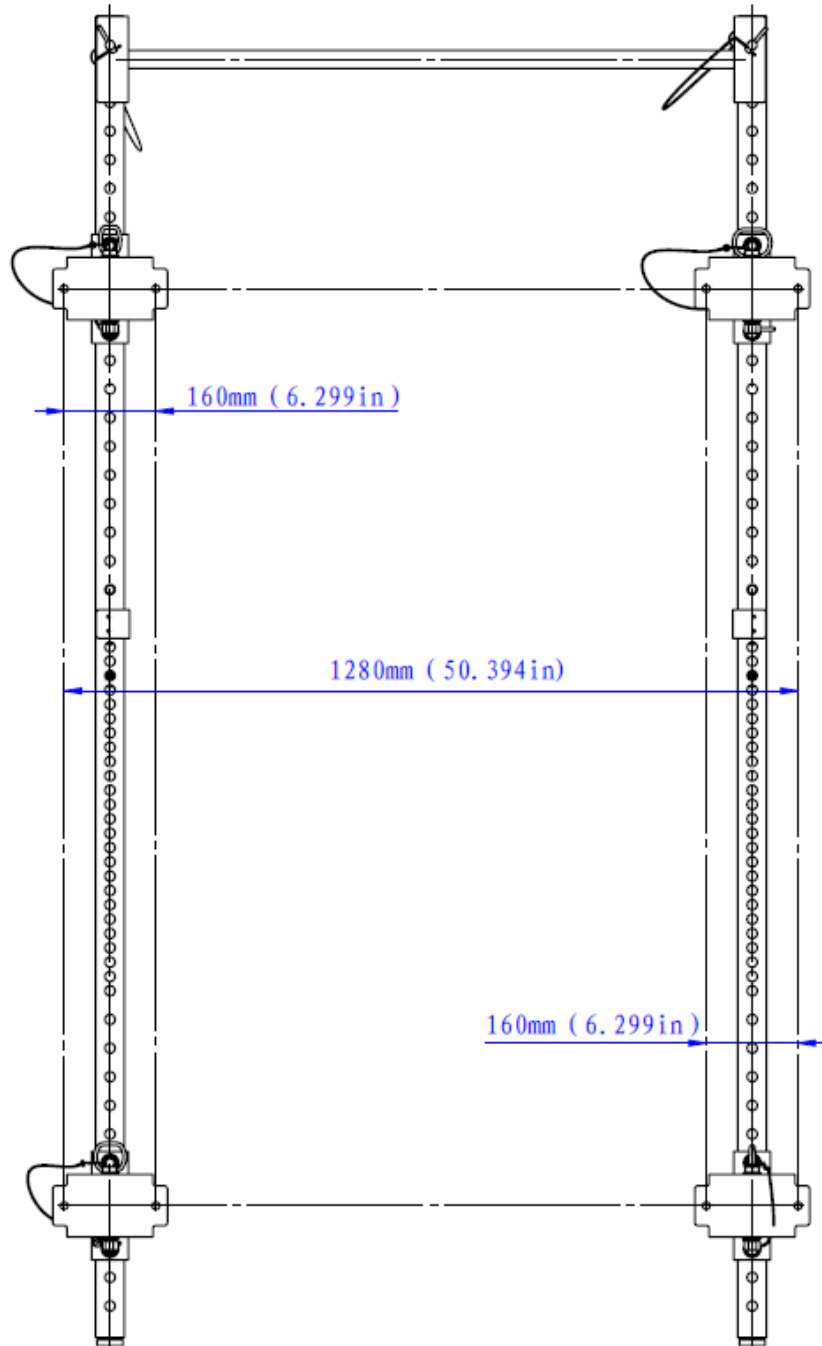
STEP 2

1. Fixing the Retaining Bracket (4) on the Wall.
2. Fixing the Pull Up Bar (2) on the Upright Frame (20), using the Pin (3).
3. Install the Left and Right J-Hook (5&6) on the Upright Frame (20).
4. Insert the Pin (3) on the Retaining Bracket (4).

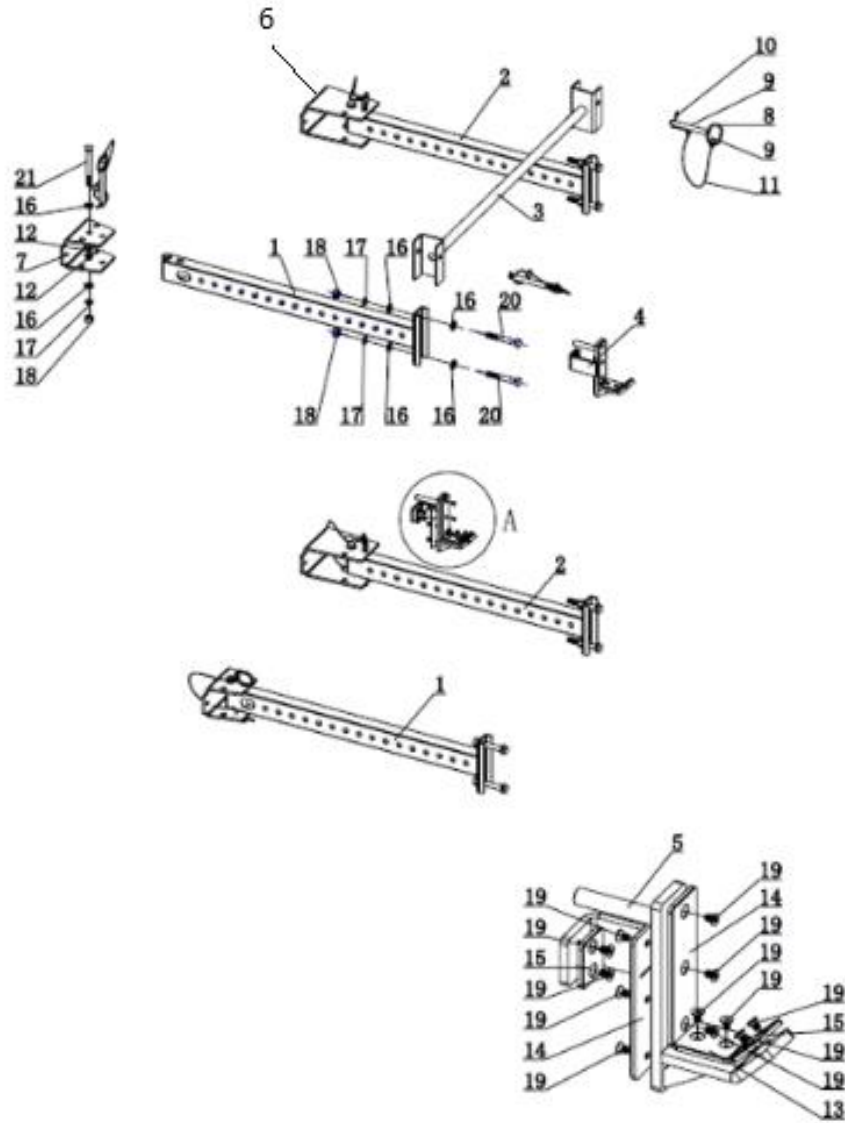


STRINGER DETAILED DIMENSIONS FOR THE T3FLDUP82/ T3FLDUP91-T3FLDSB21

Note: TITAN Fitness specifies all our products in metric(mm),and suggest measuring in metric for most accuracy.Inch dimensions provide as alternative option.



FULL PARTS LIST – SHOWN WITH THE 41" DEPTH SIDE BRACINGS

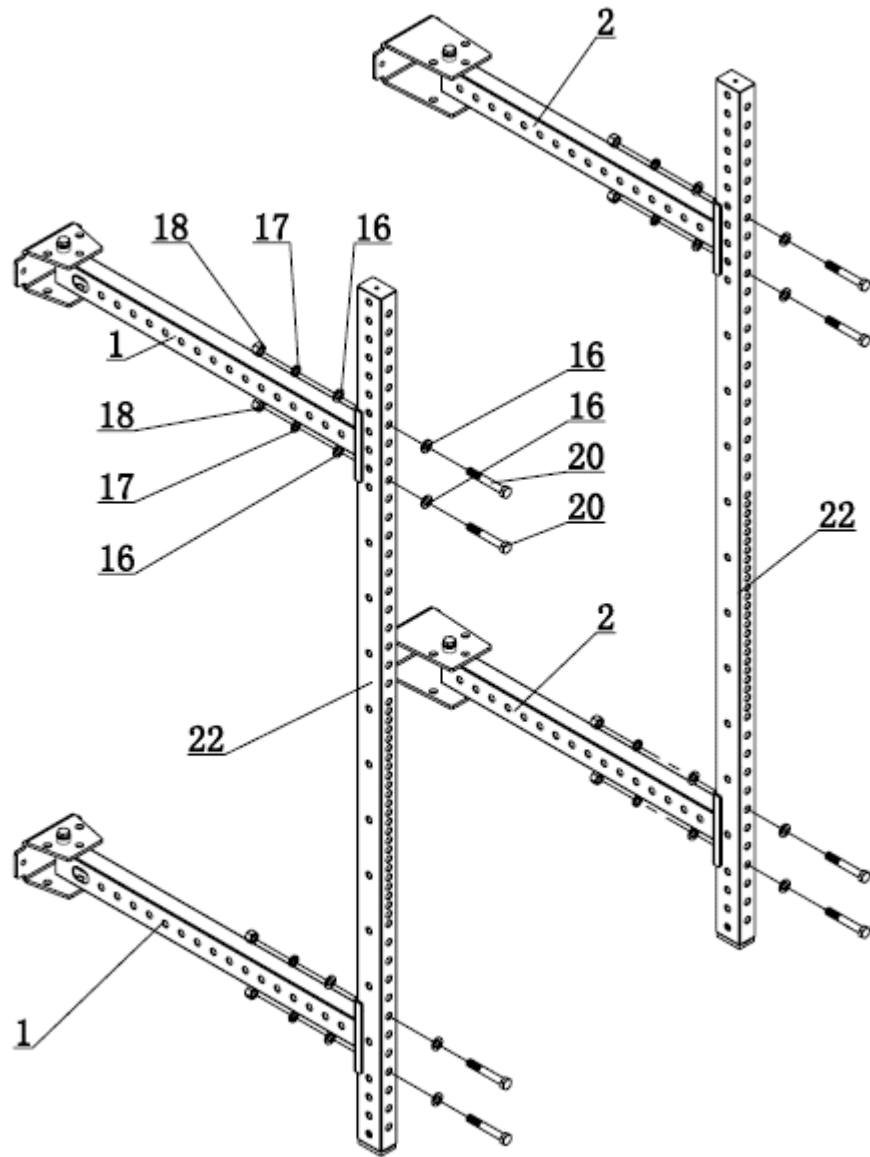


| KEY | BOX | DESCRIPTION | QTY | KEY | BOX | DESCRIPTION | QTY |
|------|-----|------------------------|-----|------|-----|------------------------------|-----|
| (1) | 1 | Rear Connecting Frame | 2 | (12) | 1 | Φ16 Bushing | 8 |
| (2) | 1 | Rear Short Connecting | 2 | (13) | 1 | Short Plastic Plate 58*48*5 | 2 |
| (3) | 1 | Pull Up Bar | 1 | (14) | 1 | Long Plastic Plate 150*48*5 | 4 |
| (4) | 1 | J-Hook(L) | 1 | (15) | 1 | Front Plastic Plate 48*40*5 | 4 |
| (5) | 1 | J-Hook(R) | 1 | (16) | 1 | Flat Washer Φ17*Φ30*3 | 24 |
| (6) | 1 | Long Retaining Bracket | 2 | (17) | 1 | Spring Washer Φ16 | 12 |
| (7) | 1 | Retaining Bracket | 2 | (18) | 1 | Nut M16 | 12 |
| (8) | 1 | PIN | 6 | (19) | 1 | Countersunk head screw M6*10 | 24 |
| (9) | 1 | Pull Ring Φ1.5*31 | 12 | (20) | 1 | Hex Bolt M16*110 | 8 |
| (10) | 1 | Small Pin Φ6*45 | 6 | (21) | 1 | Hex Bolt M16*135 | 4 |
| (11) | 1 | Cable Φ5.5*Φ1.6*330 | 6 | | | | |

ASSEMBLY INSTRUCTIONS – SHOWN WITH THE 41" DEPTH SIDE BRACINGS

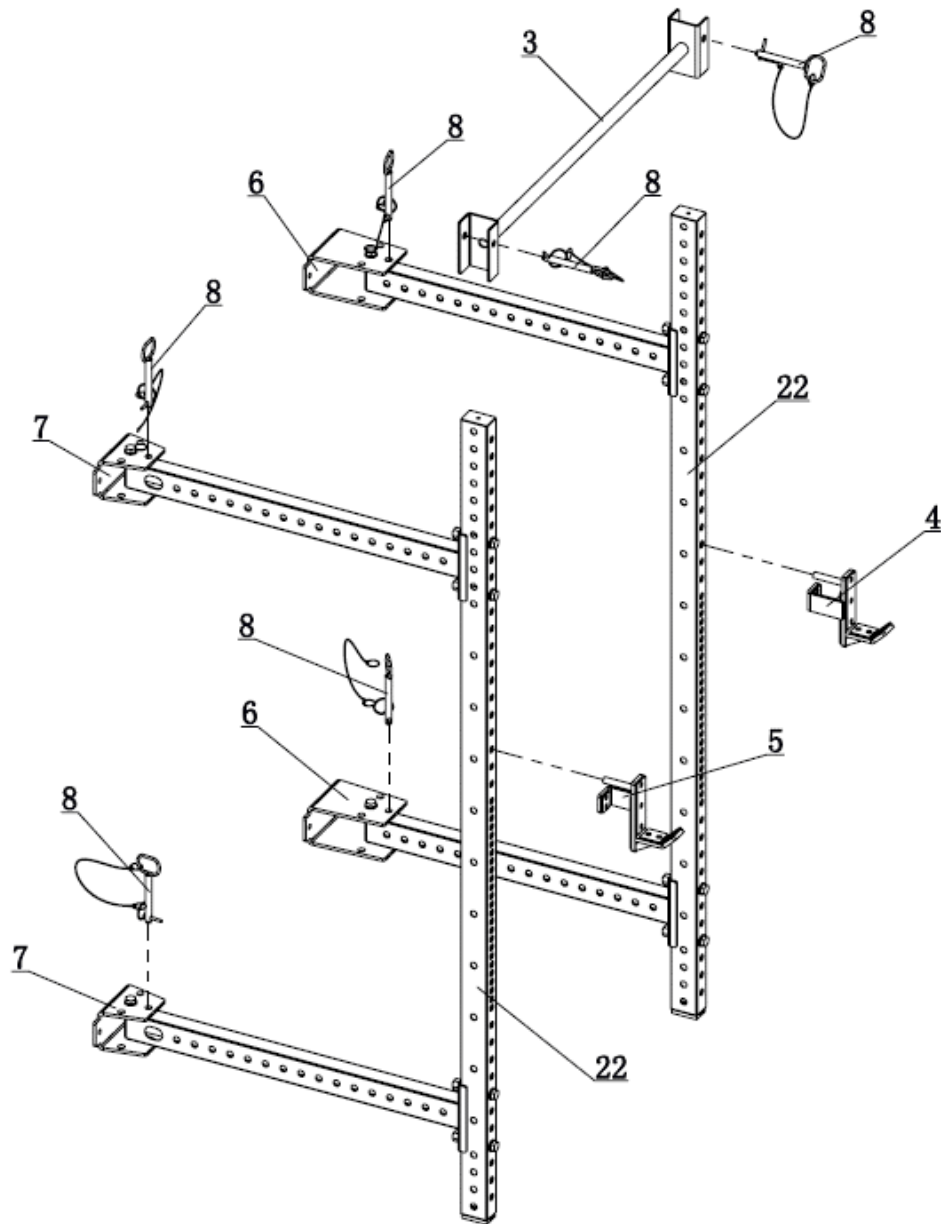
STEP 1

Install the Rear Connecting Frame (1) and Rear Short Connecting Frame (2) on the Upright Frame (22), using Flat Washer $\Phi 17 \times \Phi 30 \times 3$ (16), Spring Washer $\Phi 16$ (17), M16 Nut (18) and Hex Bolt M16*110(20).



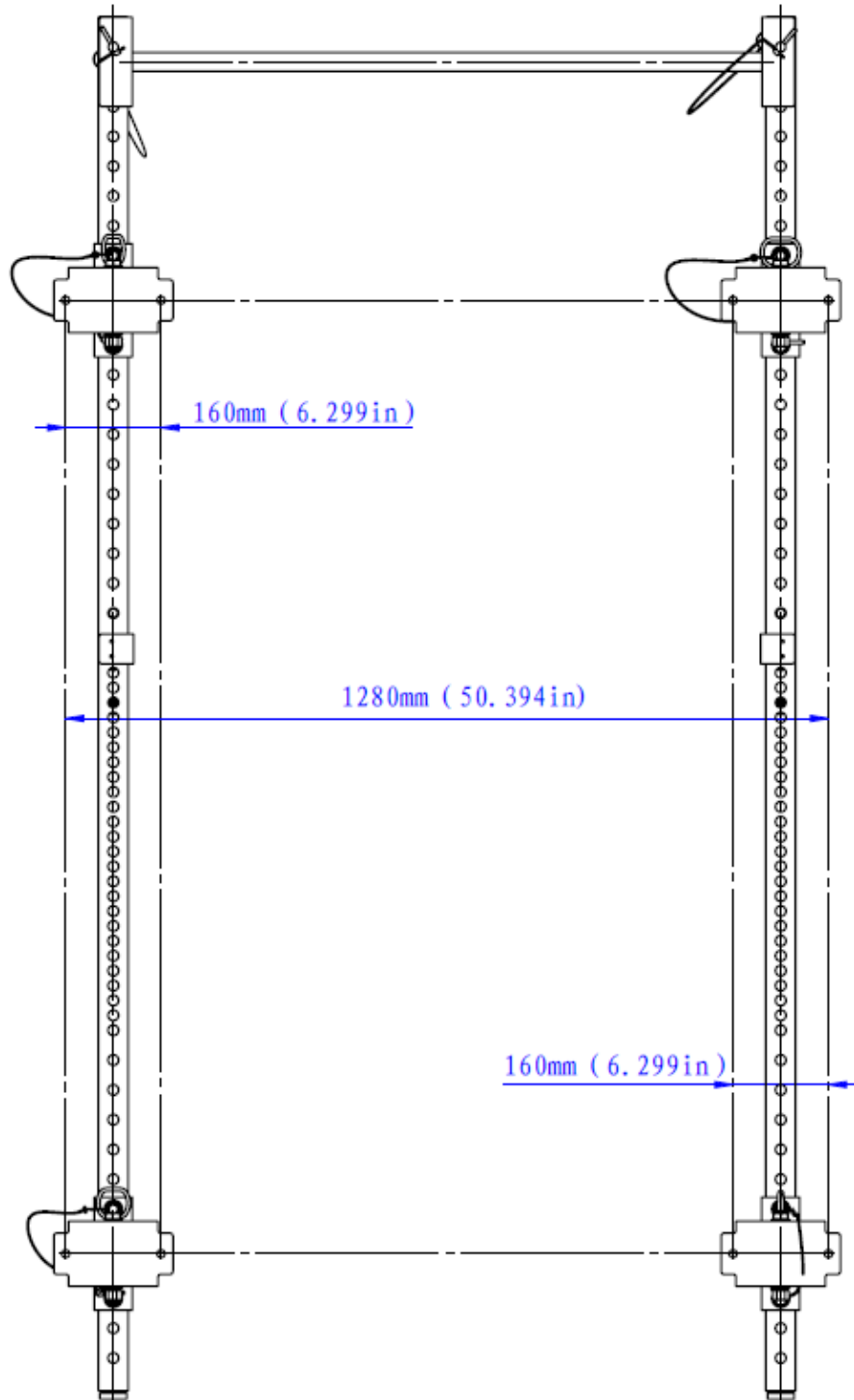
Step 2

1. Fixing the Long Retaining Bracket (6) and Retaining Bracket (7) on the Wall.
2. Fixing the Pull Up Bar (3) on the Upright Frame (22), using the Pin (8).
3. Install the Left and Right J-Hook (4&5) on the Upright Frame (22).
4. Insert the Pin (8) on the Long Retaining Bracket (6) and Retaining Bracket (7).



STRINGER DETAILED DIMENSIONS FOR THE T3FLDUP82/ T3FLDUP91-T3FLDSB41

Note: TITAN Fitness specifies all our products in metric(mm),and suggest measuring in metric for most accuracy.Inch dimensions provide as alternative option.



ACKNOWLEDGEMENT OF RISK AND RELEASE OF LIABILITY

The use of any equipment, including this one, involves the potential risk of injury. Apart from any warranty claim that might be presented for a claimed defect in material or workmanship of the product, you accept and assume full responsibility for any and all injuries, damages (both economic and non-economic), and losses of any type, which may occur, and you fully and forever release and discharge Titan, its insurers, employees, officers, directors, associates, and agents from any and all claims, demands, damages, rights of action, or causes of action, present or future, whether the same be known or unknown, anticipated, or unanticipated, resulting from or arising out of the use of said equipment.

This equipment must be used with care by capable and competent individuals under supervision,

WARNING



Heavy object. Use lifting aids and proper lifting techniques when moving.



Choking hazard. Small parts – Please exercise caution if small children or pets are present.



Sharp objects may be involved. Use precaution and protection.

TITAN LIMITED WARRANTY: TERMS, EXCLUSIONS AND LIMITATIONS OF REMEDIES

This product comes with a one (1) year limited warranty that can be found at www.titan.fitness/warranty.html Please review the same for all details regarding the Titan Limited Warranty.

THE TITAN LIMITED WARRANTY FOUND AT WWW.TITAN.FITNESS/WARRANTY IS EXCLUSIVE AND IS IN LIEU OF ALL OTHER WARRANTIES, EXPRESS OR IMPLIED, INCLUDING ANY IMPLIED WARRANTY OF MERCHANTABILITY AND/OR FITNESS FOR A PARTICULAR PURPOSE, EACH OF WHICH IS HEREBY DISCLAIMED.



NEED HELP? CONTACT US FIRST.

1-888-410-1503

info@titan.fitness

www.titan.fitness

© 2024 Titan Brands