

HYDRAULIC REAR BLADE

84REARBLADEv2, 96REARBLADEv2

191649, 191650

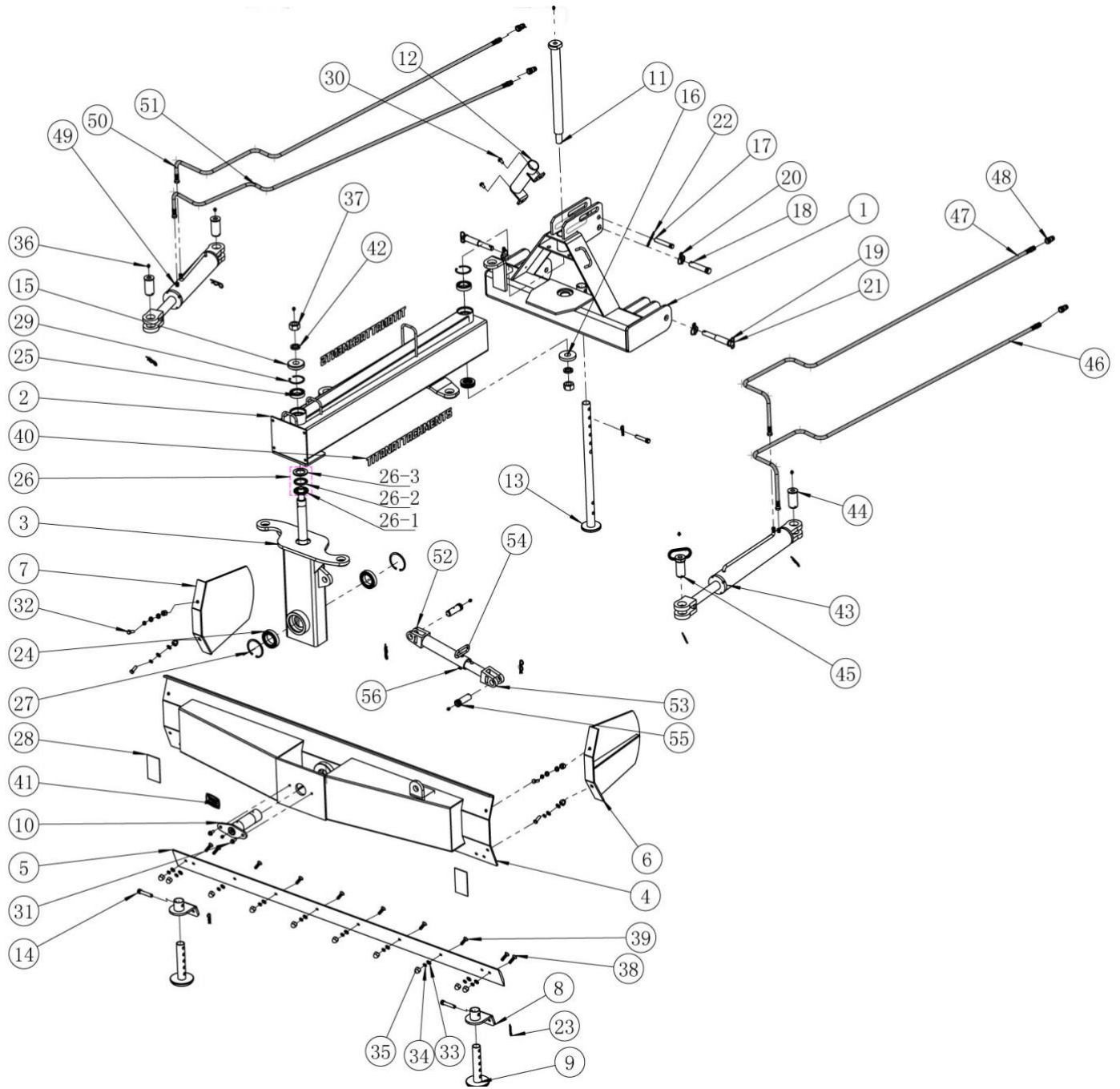


Operator's Manual



Read the Operator's Manual entirely. When you see this symbol, the subsequent instructions and warnings are serious follow without exception. Your life and the lives of others depend on it!

PARTS DIAGRAM / EXPLODED VIEW

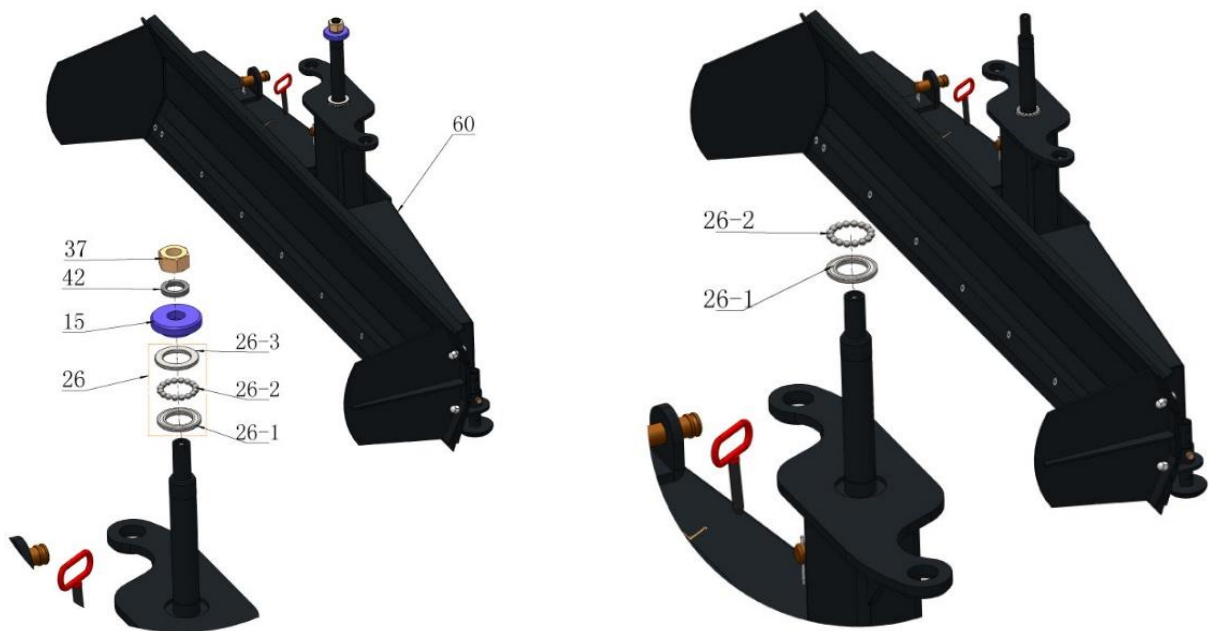


PART	DESCRIPTION	QTY
(1)	3PT LINK MOUNT FRAME	1
(2)	BOOM ASSY	1
(3)	BLADE SWING PUSH FRAME	1
(4)	REAR BLADE ASSY	1
(5)	CUTTING EDGE ASSY	1
(6)	BLADE END MUD FENDER-RIGHT	1
(7)	BLADE END MUD FENDER-LEFT	1
(8)	SKID SHOE MOUNTING BRACKET	2
(9)	SKID SHOE	2
(10)	KING PIN	1
(11)	PIN SHAFT-5 (BOOM PIVOT)	1
(12)	TOOL HOLDER	1
(13)	LEG STAND	1
(14)	PIN SHAFT-6	3
(15)	PIN SHAFT SPACER-1 (YYTDQ-15)	1
(16)	PIN SHAFT SPACER-2 (YYTDQ-16)	1
(17)	3PT TOP LINK CAT1 PIN	1
(18)	3PT TOP LINK CAT2 PIN	1
(19)	3PT LOWR LINK CAT1/2 STEP PIN	2
(20)	LOCK PIN (ϕ 9.5)	3
(21)	PIN HANDLE RING	2
(22)	COTTER PIN 4x70	7
(23)	COTTER PIN 4x50	3
(24)	BALL BEARING 6012	2
(25)	BALL BEARING 6009	2
(26)	BEARING 51209	2
(27)	CIRCLIP-2 (95)	2
(28)	REFLECTOR	2
(29)	CIRCLIP-1 (75)	2
(30)	HEXA FLANGE BOLT M10x20	2

KEY	DESCRIPTION	QTY
(31)	HEXA FLANGE BOLT M12x25	2
(32)	HEXA BOLT M12x35	4
(33)	FLAT WASHER M12	18
(34)	SPRING WASHER M12	14
(35)	HEXA CAP NUT M12	14
(36)	GREASE ZERK M10x1	9
(37)	HEXA BOLT M30	2
(38)	COUNTERSUNK HEXA BOLT M12x45	4
(39)	COUNTERSUNK HEXA BOLT M12x40	6
(40)	TITAN LOGO STICKER	2
(41)	TITAN LOGO-1	1
(42)	SPRING WASHER M30	2
(43)	BLADE SWING HYDRAULIC CYLINDER	1
(44)	PIN SHAFT-1 (XTREE06)	3
(45)	PIN SHAFT-2 (WITH HANDLE RING)	1
(46)	BLADE SWING CYLINDER FEED HOSE	1
(47)	BLADE SWING CYLINDER RETURN HOSE	1
(48)	PIONEER COUPLER - MALE	4
(49)	BOOM OFFSET HYDRAULIC CYLINDER	1
(50)	BOOM OFFSET CYLINDER FEED HOSE	1
(51)	BOOM OFFSET CYLINDER RETURN HOSE	1
(52)	MANUAL TILT CYLINDER SLEEVE	1
(53)	MANUAL TILT CYLINDER ROD	1
(54)	PIN SHAFT-3 (ϕ 16Xx80x6)	1
(55)	PIN SHAFT-4	2
(56)	COTTER PIN 4x45	1

ASSEMBLY INSTRUCTIONS FOR 84REARBLADEv2 AND 93REARBLADE

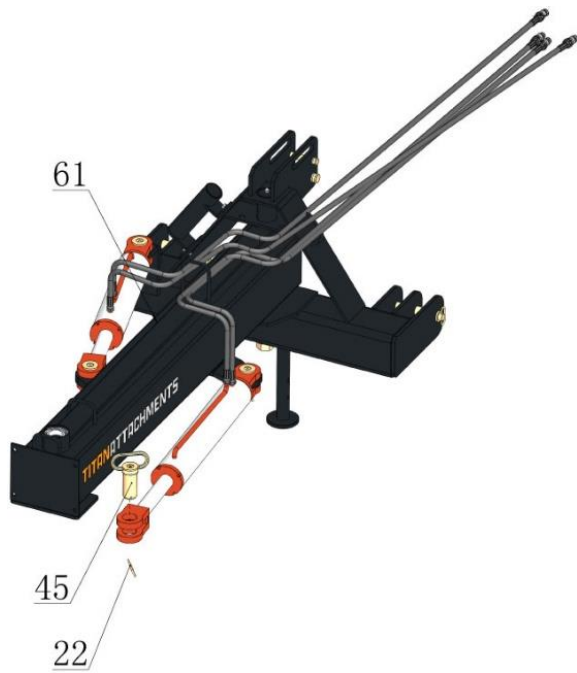
STEP 1



PART#	DESCRIPTIONS
15	FLAT SHIM WASHER
26-1	BEARING LOWER COVER
26-2	BEARING
26-3	BEARING UPPER COVER
37	HEXA NUT
42	SPRING WASHER
60	REAR BLADE ASSY

- Take off Hexa Nut (37), Spring Washer (42), Flat Shum Washer (15), Bearing Lower Cover (26-1), Bearing (26-2) and Bearing Upper Cover (26-3) from the shaft of Rear Blade Assy (60).
- Apply solid bearing grease to Bearing (26-2) and Bearing Lower Cover (26-1) to lubricate.
- Insert Bearing Lower Cover (26-1) and Bearing (26-2) back to the shaft.
- Keep Hexa Nut (37), Spring Washer (42), Flat Shum Washer (15) and Bearing Upper Cover (26-3) For use in the next step.

STEP 2

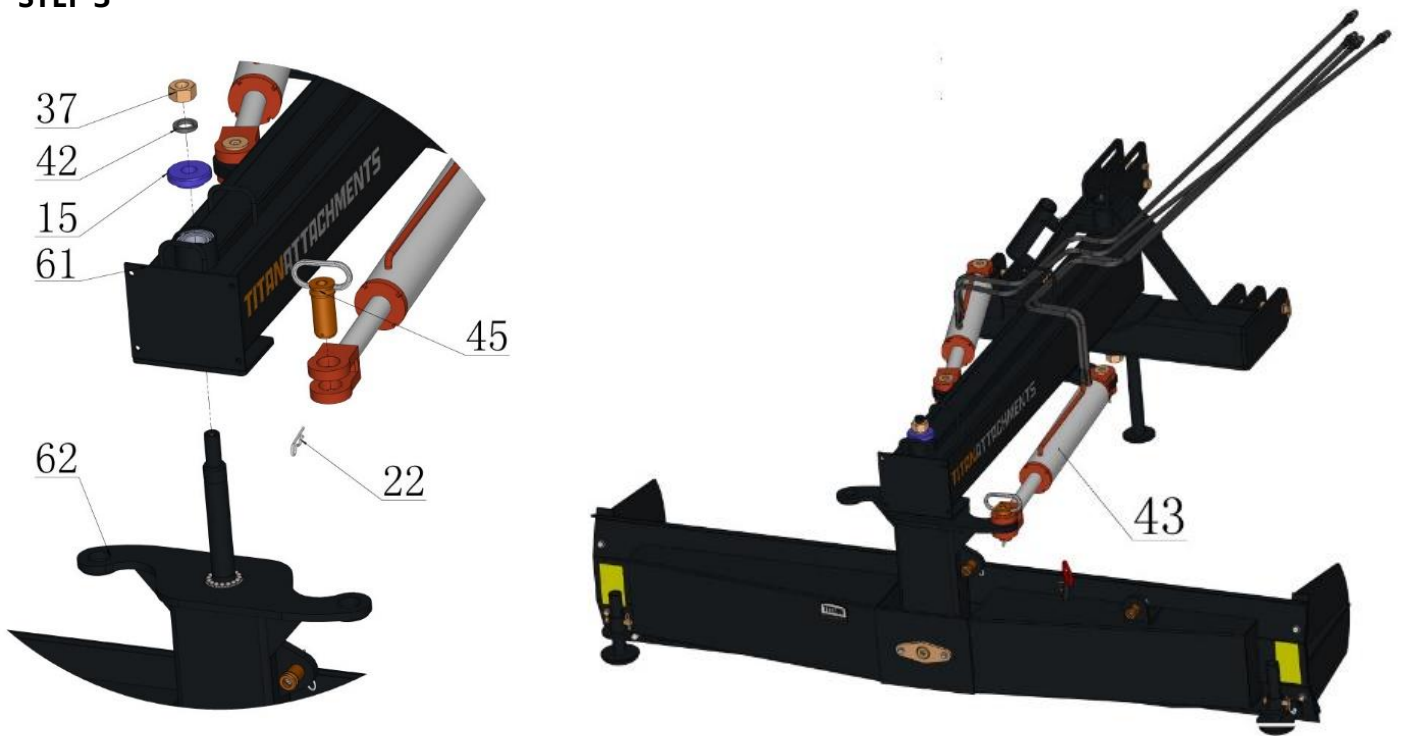


Apply grease to this shaft opening

PART#	DESCRIPTIONS
22	COTTER PIN
26-3	BEARING UPPER COVER
45	CYLINDER PIN
61	BOOM ASSY

- Take off Cylinder Pin (45) and Cotter Pin (22) from the cylinder attaching to the Boom (61). Keep these parts for use in the next step.
- Apply solid bearing grease to the bottom shaft opening of the Boom (61) and put Bearing Upper Cover (26-3) into the opening. The grease applied will help to stick the Bearing Upper Cover (26-3) on the opening.

STEP 3



PART#	DESCRIPTIONS	PART#	DESCRIPTIONS
15	FLAT SHIM WASHER	43	CYLINDER
22	COTTER PIN	45	CYLINDER PIN
37	HEXA NUT	61	BOOM ASSY
42	SPRING WASHER	62	BLADE PUSHER ASSY

- Attach 3-point link of the Boom Assy (61) to tractor and move to the Rear Blade Assy (60) that is sitting upright in the steel crate.
- Align the shaft openings at the front of the Boom Assy (61) with the shaft of the Blade Pusher Assy (62).
- Lower the Boom Assy (61) to insert the shaft of the Blade Pusher Assy (62) through the openings.
- Put Flat Shim Washer (15), Spring Washer (42) and Hex Nut (37) on the top threaded part of the shaft and tighten.
- Attach the Cylinder (43) to the Blade Pusher Assy (62) bracket using Cylinder Pin (45) and Cotter Pin (22).
- Installation is completed.

ACKNOWLEDGEMENT OF RISK AND RELEASE OF LIABILITY

The use of any equipment, including this one, involves the potential risk of injury. Apart from any warranty claim that might be presented for a claimed defect in material or workmanship of the product, you accept and assume full responsibility for any and all injuries, damages (both economic and non-economic), and losses of any type, which may occur, and you fully and forever release and discharge Titan, its insurers, employees, officers, directors, associates, and agents from any and all claims, demands, damages, rights of action, or causes of action, present or future, whether the same be known or unknown, anticipated, or unanticipated, resulting from or arising out of the use of said equipment.

This equipment must be used with care by capable and competent individuals under supervision, if necessary.

TITAN LIMITED WARRANTY: TERMS, EXCLUSIONS AND LIMITATIONS OF REMEDIES

This product comes with a one (1) year limited warranty that can be found at www.palletforks.com/warranty.html. Please review the same for all details regarding the Titan Limited Warranty.

THE TITAN LIMITED WARRANTY FOUND AT WWW.PALLETFORKS.COM/WARRANTY.HTML IS EXCLUSIVE AND IS IN LIEU OF ALL OTHER WARRANTIES, EXPRESS OR IMPLIED, INCLUDING ANY IMPLIED WARRANTY OF MERCHANTABILITY AND/OR FITNESS FOR A PARTICULAR PURPOSE, EACH OF WHICH IS HEREBY DISCLAIMED.



NEED HELP? CONTACT US FIRST.

1-800-605-7595

info@palletworks.com

www.palletforks.com

© 2024 Titan Brands