

ARTIFICIAL TURF

TURFGRN, TURFBLK

409045 409046



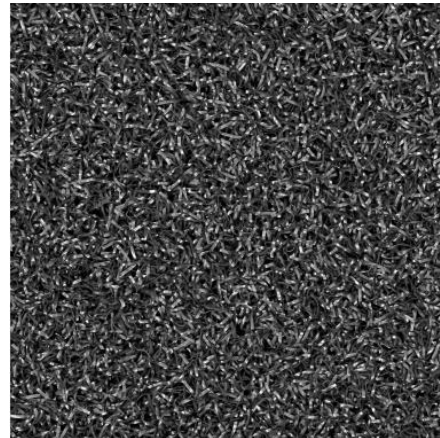
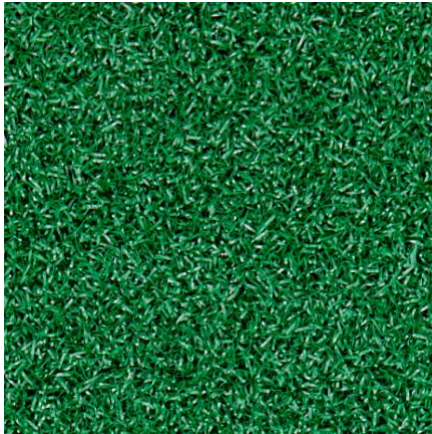
Operator's Manual



Read the Operator's Manual entirely. When you see this symbol, the subsequent instructions and warnings are serious follow without exception. Your life and the lives of others depend on it!

PARTS DIAGRAM / EXPLODED VIEW

KEY	DESCRIPTION	QTY
(1)	GREEN	1
(2)	BLACK	1



ASSEMBLY INSTRUCTIONS

Before installation, we recommend that you have the following:

- Turf flooring
- Straight edge
- Utility knife
- Brushes
- Gloves
- Glue

STEP 1

- Clean your subfloor. It needs to be free of dirt, dust, grease, and debris.
- Make sure your subfloor is dry.
- It is recommended to lay the turf directly on the gym mat, concrete or wooden sub-floor.

Note: It is not recommended to install the turf directly on plush or fluffy carpet as the turf cannot bond to the subfloor and is prone to slipping and causing injury.

STEP 2

- Pre-laying the turf a day in advance allows it to stretch out better and reduces artificial expansion and contraction caused by packing.

STEP 3

- Use the utility knife and straight edge if you get to the wall and need to cut away excess turf flooring.

STEP 4

- As needed, you can use a turf-specific glue to stick it to the subfloor and wait for the glue to completely set and hold the turf in place.
- Wear gloves and use a brush to evenly apply the glue to the back of the turf, finally gluing it together.

ATTENTION:

- After applying the glue, it needs to be left for more than 3 days for the glue to dry before using.
- The glue can be applied on the back of the turf to avoid spillage causing the floor to be dirty.

ACKNOWLEDGEMENT OF RISK AND RELEASE OF LIABILITY

The use of any equipment, including this one, involves the potential risk of injury. Apart from any warranty claim that might be presented for a claimed defect in material or workmanship of the product, you accept and assume full responsibility for any and all injuries, damages (both economic and non-economic), and losses of any type, which may occur, and you fully and forever release and discharge Titan, its insurers, employees, officers, directors, associates, and agents from any and all claims, demands, damages, rights of action, or causes of action, present or future, whether the same be known or unknown, anticipated, or unanticipated, resulting from or arising out of the use of said equipment.

This equipment must be used with care by capable and competent individuals under supervision,

WARNING



Heavy object. Use lifting aids and proper lifting techniques when moving.



Choking hazard. Small parts – Please exercise caution if small children or pets are present.



Sharp objects may be involved. Use precaution and protection.

TITAN LIMITED WARRANTY: TERMS, EXCLUSIONS AND LIMITATIONS OF REMEDIES

This product comes with a one (1) year limited warranty that can be found at www.titan.fitness/warranty.html Please review the same for all details regarding the Titan Limited Warranty.

THE TITAN LIMITED WARRANTY FOUND AT WWW.TITAN.FITNESS/WARRANTY IS EXCLUSIVE AND IS IN LIEU OF ALL OTHER WARRANTIES, EXPRESS OR IMPLIED, INCLUDING ANY IMPLIED WARRANTY OF MERCHANTABILITY AND/OR FITNESS FOR A PARTICULAR PURPOSE, EACH OF WHICH IS HEREBY DISCLAIMED.



NEED HELP? CONTACT US FIRST.

1-888-410-1503

info@titan.fitness

www.titan.fitness

© 2024 Titan Brands