

ECONOMY SERIES HYDRAULIC MOBILE LIFT TABLE

MSLTECON2817
840026



Operator's Manual

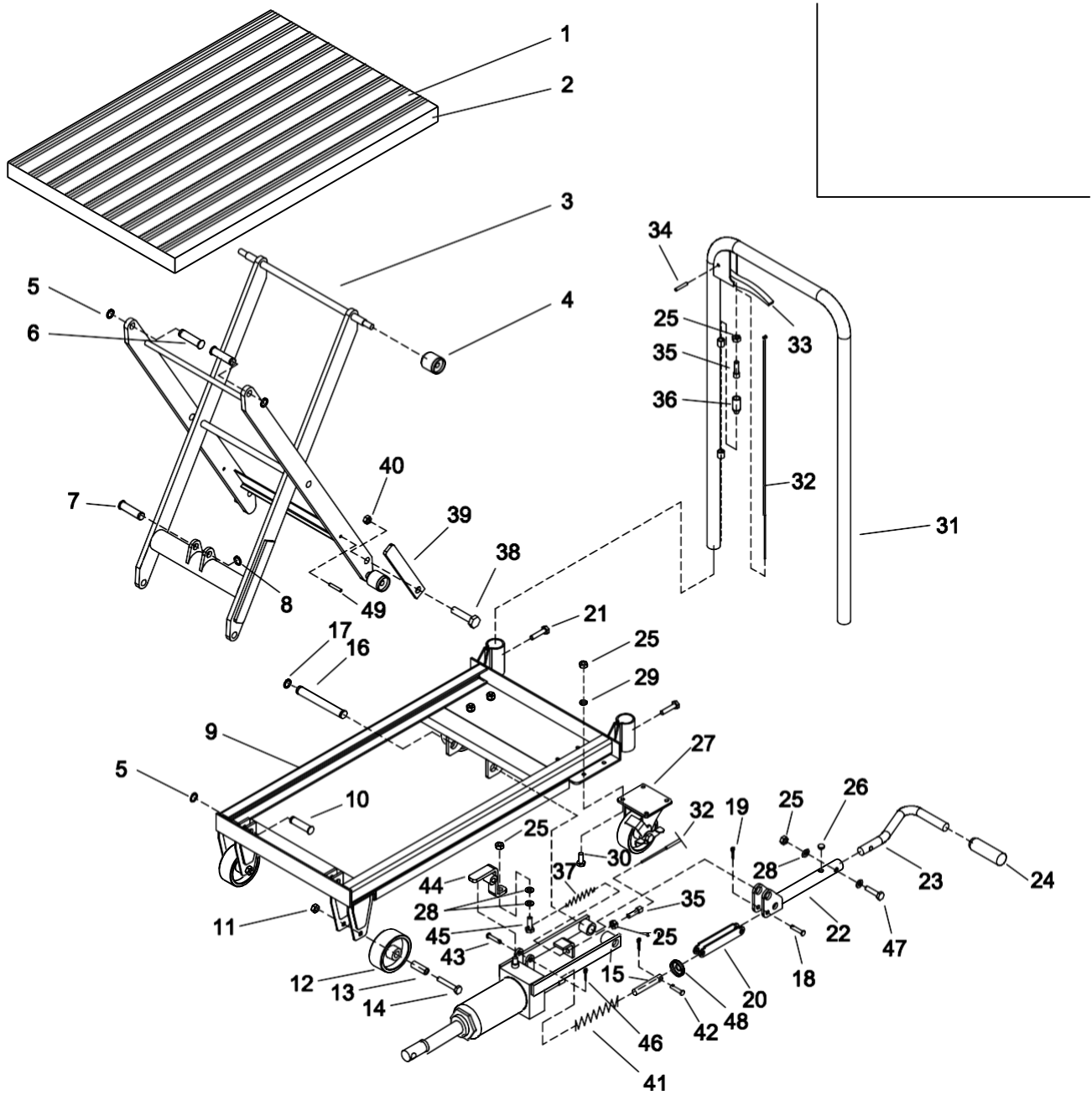


Read the Operator's Manual entirely. When you see this symbol, the subsequent instructions and warnings are serious follow without exception. Your life and the lives of others depend on it!

IMPORTANT SAFETY INFORMATION

1. Do not exceed 500 lb. max weight capacity. Be aware of dynamic loading! Sudden load movement may briefly create excess load causing product failure.
2. Use only on flat, level, and hard surface capable of supporting the Lift Table and any item(s) placed on Table. Evenly distribute load on Table to avoid tipping.
3. Use as intended only. Do not use Lift Table to lift or transport animals, pets, or people.
4. Assemble only according to these instructions. Improper assembly can create hazards.
5. Wear ANSI-approved safety goggles and heavy-duty work gloves during assembly and use.
6. Keep assembly area clean and well lit.
7. Keep bystanders out of the area during assembly.
8. Do not assemble when tired or when under the influence of drugs or medication.
9. This product is not a toy. Do not allow children to play with or near this item.
10. Use as intended only.
11. Inspect before every use; do not use if parts are loose or damaged.

PARTS DIAGRAM / EXPLODED VIEW

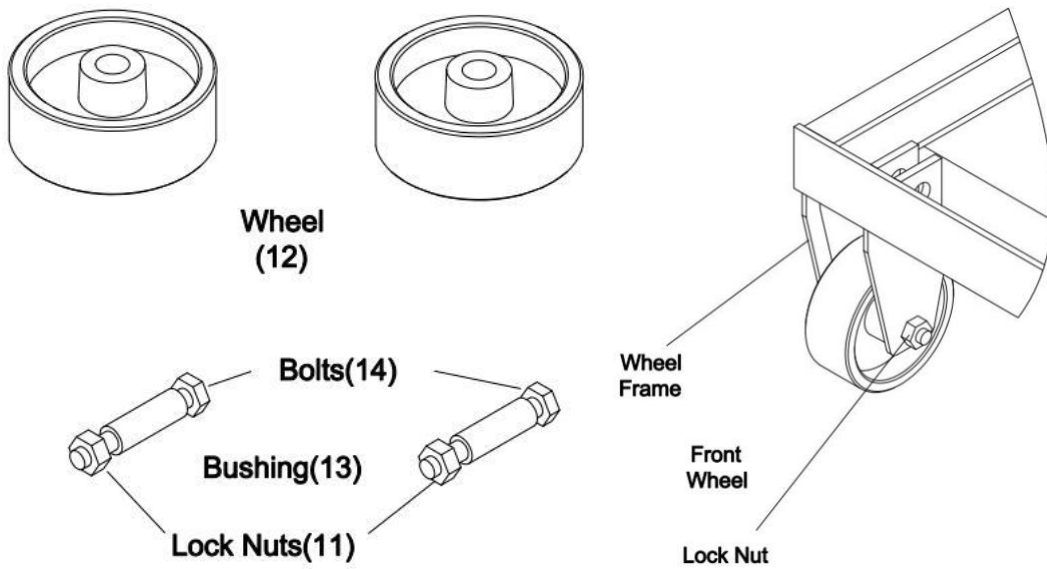


PART	DESCRIPTION	QTY	PART	DESCRIPTION	QTY
(1)	PROTECTIVE MAT	1	(26)	RUBBER PAD	1
(2)	LIFT TABLE	1	(27)	4" LOCKING SWIVERL CASTER	2
(3)	SCISSOR ARM	1	(28)	WASHER 8	4
(4)	ROLLER	4	(29)	SPRING WASHER 8	8
(5)	RETAINING RING 12	4	(30)	HEX BOLT M8*16	8
(6)	PIN	2	(31)	HANDLE	1
(7)	PIN	1	(32)	PULL ROD	1
(8)	RETAINING RING 14	1	(33)	CONTROL LEVER	1
(9)	BASE	1	(34)	ROLLER PIN 6*25	1
(10)	PIN	2	(35)	BOLT M8*25	2
(11)	LOCK NUT M8	2	(36)	JACKET	1
(12)	4" WHEEL	2	(37)	SMALL JACKET	1
(13)	BUSHING	2	(38)	HEX BOLT M10*30	2
(14)	HEX BOLT M8*65	2	(39)	SAFETY BAR	2
(15)	RAM	1	(40)	NUT M10	2
(16)	PIN	1	(41)	SPRING	1
(17)	RETAINING RING 16	2	(42)	PIN 8*30	1
(18)	PIN 10*40	1	(43)	PIN 8*40	1
(19)	COTTER PIN	2	(44)	Z-PLATE	1
(20)	CONDUCTIVE ROD	1	(45)	HEX BOLT M8*25	1
(21)	HEX BOLT M8*40	2	(46)	COTTER PIN OR "R" PIN	1
(22)	CONNECTING ROD	1	(47)	HEX BOLT M8*35	1
(23)	PUMP LEVER	1	(48)	BOWL LID	1
(24)	FOOT PEDAL	1	(49)	ROLL PIN 8*22	2
(25)	NUT M8	12	(50)		

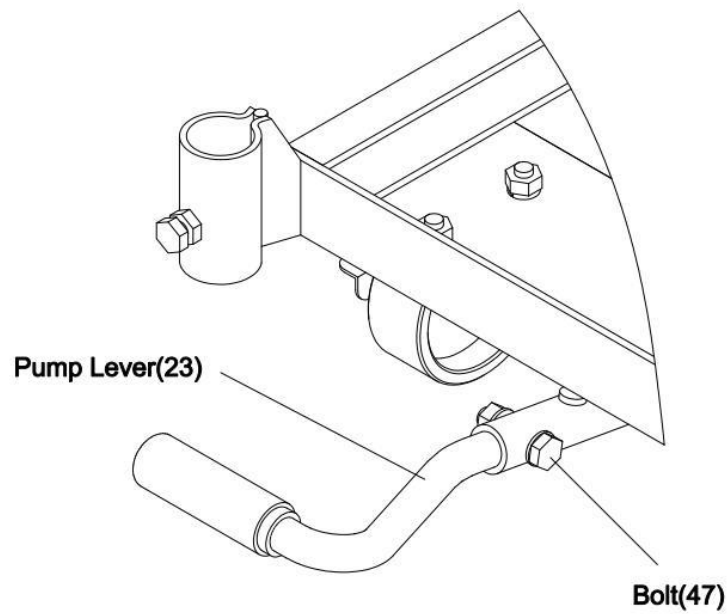
ASSEMBLY INSTRUCTIONS

The Hydraulic Lift Table requires some assembly after you unpack it.

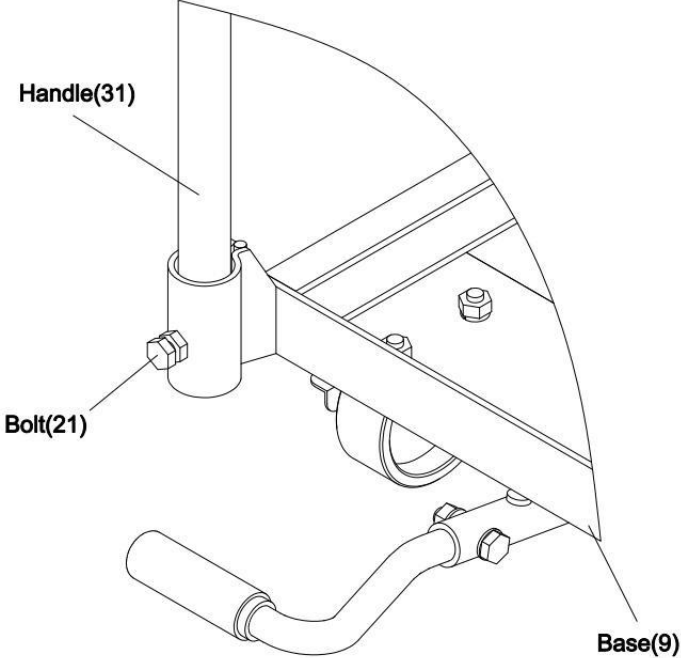
1. Attach [12] Wheel to the lift table using [14] Bolt M8x65, [13] Bushing and [11] Lock Nut M8



2. Attach [23] Pump lever to the lift table using [47] Bolt M8x35, [28] Washer M8 and [25] Nut M8.



3. Attach [31] Handle to the lift table using [21] Bolt M8x40.



ACKNOWLEDGEMENT OF RISK AND RELEASE OF LIABILITY

The use of any equipment, including this one, involves the potential risk of injury. Apart from any warranty claim that might be presented for a claimed defect in material or workmanship of the product, you accept and assume full responsibility for any and all injuries, damages (both economic and non-economic), and losses of any type, which may occur, and you fully and forever release and discharge Titan, its insurers, employees, officers, directors, associates, and agents from any and all claims, demands, damages, rights of action, or causes of action, present or future, whether the same be known or unknown, anticipated, or unanticipated, resulting from or arising out of the use of said equipment.

This equipment must be used with care by capable and competent individuals under supervision, if necessary.

WARNING



Do not overfill! Mower should be level when checking oil in gear box.



some activities might be able to cause electric shock



Sharp objects may be involved.
Use protective cover during maintenance.

TITAN LIMITED WARRANTY: TERMS, EXCLUSIONS AND LIMITATIONS OF REMEDIES

This product comes with a one (1) year limited warranty that can be found at www.palletforks.com/warranty.html. Please review the same for all details regarding the Titan Limited Warranty.

THE TITAN LIMITED WARRANTY FOUND AT WWW.PALLETFORKS.COM/WARRANTY.HTML IS EXCLUSIVE AND IS IN LIEU OF ALL OTHER WARRANTIES, EXPRESS OR IMPLIED, INCLUDING ANY IMPLIED WARRANTY OF MERCHANTABILITY AND/OR FITNESS FOR A PARTICULAR PURPOSE, EACH OF WHICH IS HEREBY DISCLAIMED.



NEED HELP? CONTACT US FIRST.

1-800-605-7595

info@palletworks.com
www.palletforks.com

© 2024 Titan Brands